

APP CRS 168°	Rwy Idg 4000
	TDZE 484
	Apt Elev 484

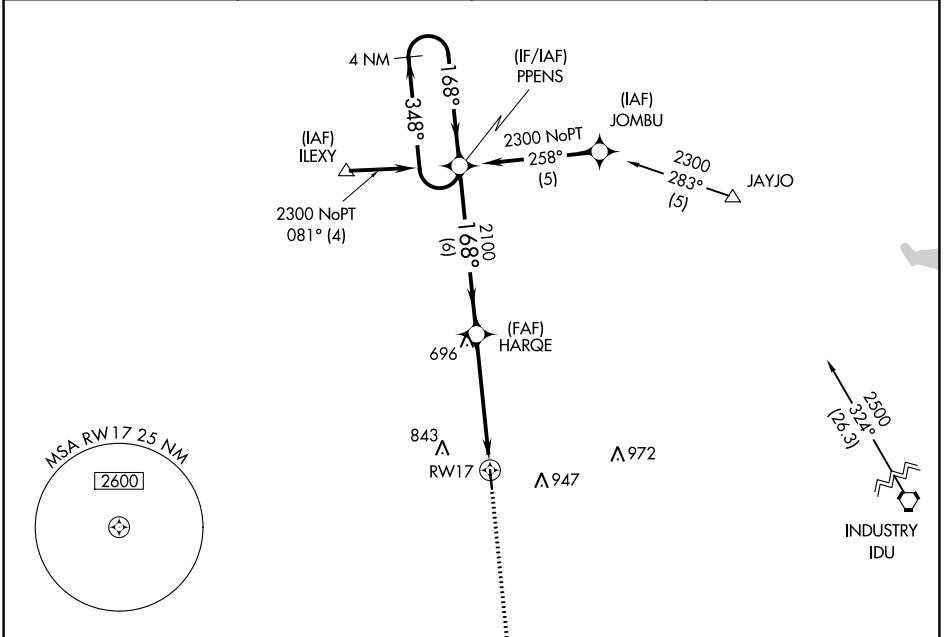
RNAV (GPS) RWY 17

GIDDINGS-LEE COUNTY (GYB)

⚠ DME/DME RNP-0.3 NA. Helicopter visibility reduction below 1 SM NA.
⚠ Procedure NA at night. When local altimeter setting not received, use Austin-Bergstrom Intl altimeter setting and increase all MDA 100 feet; increase LNAV Cat C visibility ¼ mile.

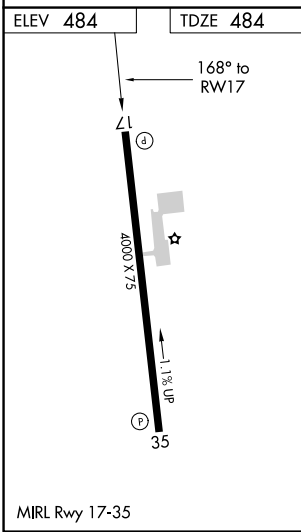
MISSED APPROACH:
 Climb to 2500 direct RAMOS and hold.

AWOS-3 119.225	AUSTIN APP CON 127.225 317.65	UNICOM 123.05 (CTAF)
--------------------------	---	--------------------------------



SC-5, 25 FEB 2021 to 25 MAR 2021

SC-5, 25 FEB 2021 to 25 MAR 2021



MISSED APCH FIX RAMOS		4 NM Holding Pattern		VGSI and descent angles not coincident (VGSI Angle 3.00/TCH 28).		2500	RAMOS
348°		168°		168°		3.04°	TCH 40
2300		2100		RW17			
6 NM		4.9 NM					
CATEGORY	A	B	C	D			
LNAV MDA	940-1	456 (500-1)	940-1¼ 456 (500-1¼)	NA			
CIRCLING	940-1	456 (500-1)	940-1½ 456 (500-1½)	NA			