

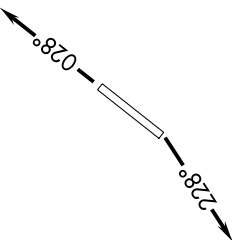
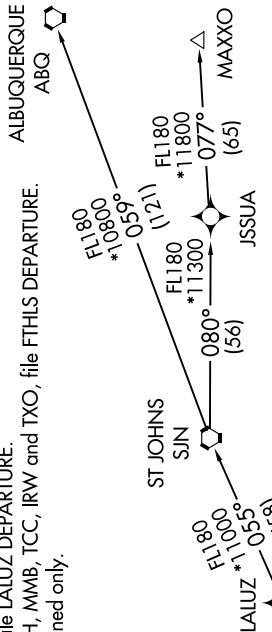
SW-4, 25 FEB 2021 to 25 MAR 2021

ATIS 118.35
GND CON 121.7
GOODYEAR TOWER * 120.1 239.3
LUKE DEP CON * 125.45 263.125
PHOENIX DEP CON 120.7 239.0

NOTE: RNAV 1.
NOTE: Turbojets and turboprops only.
NOTE: RADAR required.
NOTE: GPS required.
NOTE: SJN TRANSITION for ABQ terminal arrivals only.
NOTE: MAXXO TRANSITION ATC assigned only.
NOTE: Aircraft filing over DEN, RSK, ALS, and points north of ALS, file YOTES DEPARTURE.
NOTE: Aircraft filing over ABQ, CIM, FTI, and GCK, file LALUZ DEPARTURE.
NOTE: Aircraft filing over ACH, LBL, ONM, CNX, PNH, MMB, TCC, IRW and TXO, file FTHLS DEPARTURE.
NOTE: Aircraft departing KGEU and KGYR ATC assigned only.

TAKEOFF MINIMUMS
Rwys 3, 21: Standard.

**TOP ALTITUDE:
ASSIGNED BY ATC**



DEPARTURE ROUTE DESCRIPTION

TAKEOFF RUNWAY 3: Climb heading 028° or as assigned by ATC, thence
TAKEOFF RUNWAY 21: Climb heading 228° or as assigned by ATC, thence

. . . . expect RADAR vectors to FORPE, then on track 055° to LALUZ, then on (transition). Maintain ATC assigned altitude, expect filed altitude 3 minutes after departure.

ALBUQUERQUE TRANSITION (LALUZ6.ABQ)
MAXXO TRANSITION (LALUZ6.MAXXO)
ST JOHNS TRANSITION (LALUZ6.SJN)

NOTE: Chart not to scale.

SW-4, 25 FEB 2021 to 25 MAR 2021