

| | | |
|-------------|----------|-------------|
| APP CRS | Rwy Idg | 5495 |
| 181° | TDZE | 436 |
| | Apt Elev | 436 |

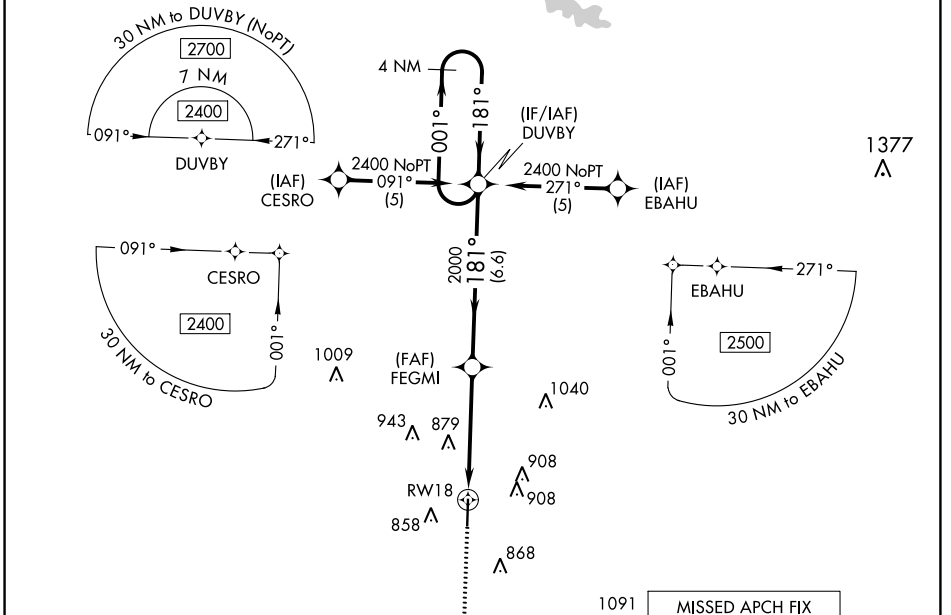
RNAV (GPS) RWY 18

MARION COUNTY-RANKIN FITE (HAB)

⚠ DME/DME RNP-0.3 NA. Helicopter visibility reduction below 1 SM NA.
⚠ Obtain local altimeter setting on CTAF. When not received, use Tupelo altimeter setting and increase all MDA 120 feet, increase LNAV MDA visibility Cat B ¼ mile, Cat C, D ½ mile and Circling visibility Cats A, D ¼ mile, Cat C ½ mile.
 Rwy 18 Straight-in and Circling minimums NA at night.

MISSED APPROACH:
 Climb to 2400 direct DEPST and hold.

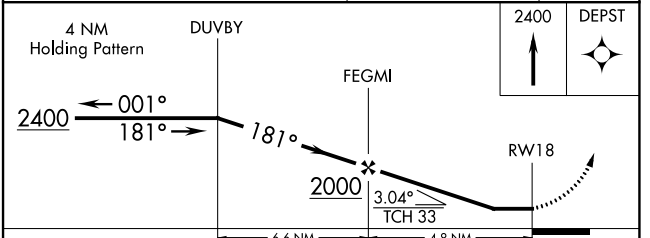
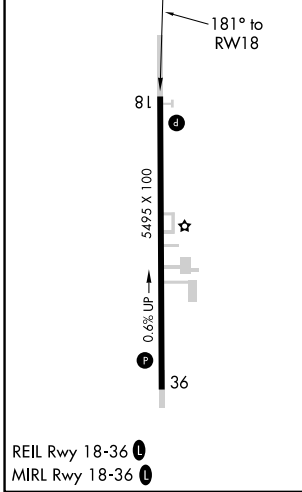
| | |
|--------------------------------------|---------------------------------|
| MEMPHIS CENTER 127.1 269.4 | UNICOM 122.8 (CTAF) 0 |
|--------------------------------------|---------------------------------|



SE-4, 25 FEB 2021 to 25 MAR 2021

SE-4, 25 FEB 2021 to 25 MAR 2021

| | |
|----------|----------|
| ELEV 436 | TDZE 436 |
|----------|----------|



| CATEGORY | A | B | C | D |
|----------|-----------------------|-------------------------|-------------------------|-------------------------|
| LNAV MDA | 1140-1 | 704 (800-1) | 1140-2 704 (800-2) | 1140-2½ 704 (800-2½) |
| CIRCLING | 1220-1 784 (800-1) | 1220-1¼ 784 (800-1¼) | 1220-2¼ 784 (800-2¼) | 1260-2¾ 824 (900-2¾) |