

WAAS CH <b>42712</b> <b>W36A</b>	APP CRS <b>001°</b>	Rwy Idg TDZE Apt Elev	<b>5495</b> <b>418</b> <b>436</b>
--	------------------------	-----------------------------	---

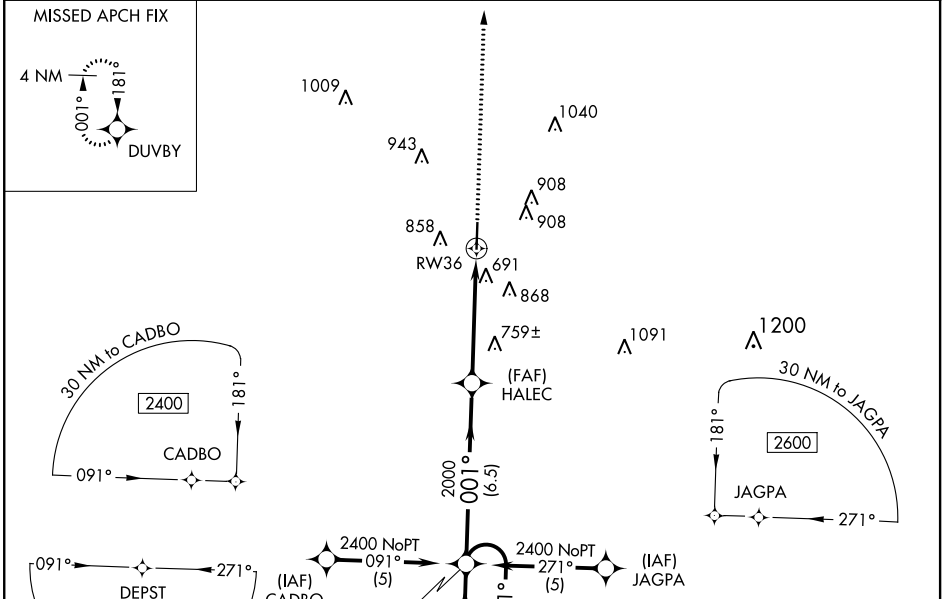
# RNAV (GPS) RWY 36

MARION COUNTY-RANKIN FITE (HAB)

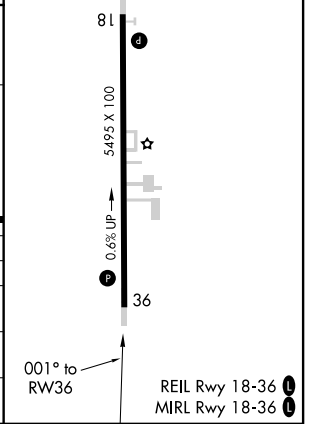
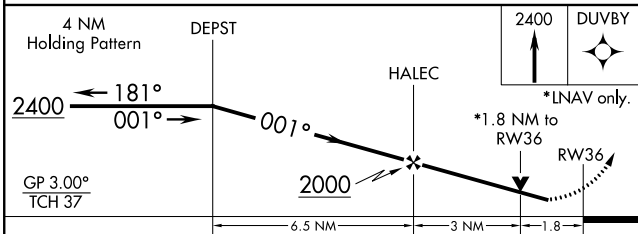
**⚠** For uncompensated Baro-VNAV systems, LNAV/VNAV NA below -15°C (5°F) or above 48°C (118°F). DME/DME RNP-0.3 NA. Helicopter visibility reduction below 3/4 SM NA. Obtain local altimeter setting on CTAF; when not received, use Tupelo altimeter setting and increase DA 104 feet and all MDA 120 feet, increase visibility LPV all Cats and LNAV Cats C, D 1/4 mile, Circling Cats A, D 1/4 mile, and Cat C 1/2 mile. VDP NA when using Tupelo altimeter setting. Baro-VNAV NA when using Tupelo altimeter setting. Circling to Rwy 18 NA at night.

**⚠** MISSED APPROACH: Climb to 2400 direct DUVBY and hold.

MEMPHIS CENTER <b>127.1 269.4</b>	UNICOM <b>122.8 (CTAF) 0</b>
--------------------------------------	---------------------------------



ELEV 436	TDZE 418
----------	----------



CATEGORY	A	B	C	D
LPV DA		723-1 1/4	305 (300-1 1/4)	
LNAV/VNAV DA		1219-3	801 (800-3)	
LNAV MDA	1020-1	602 (600-1)	1020-1 1/4 602 (600-1 1/4)	1020-2 602 (600-2)
CIRCLING	1220-1 784 (800-1)	1220-1 1/4 784 (800-1 1/4)	1220-2 1/4 784 (800-2 1/4)	1260-2 3/4 824 (900-2 3/4)

SE-4, 25 FEB 2021 to 25 MAR 2021

SE-4, 25 FEB 2021 to 25 MAR 2021