

WAAS CH 62812 W17A	APP CRS 170°	Rwy Idg 4400 TDZE 769 Apt Elev 769
---------------------------------	------------------------	---

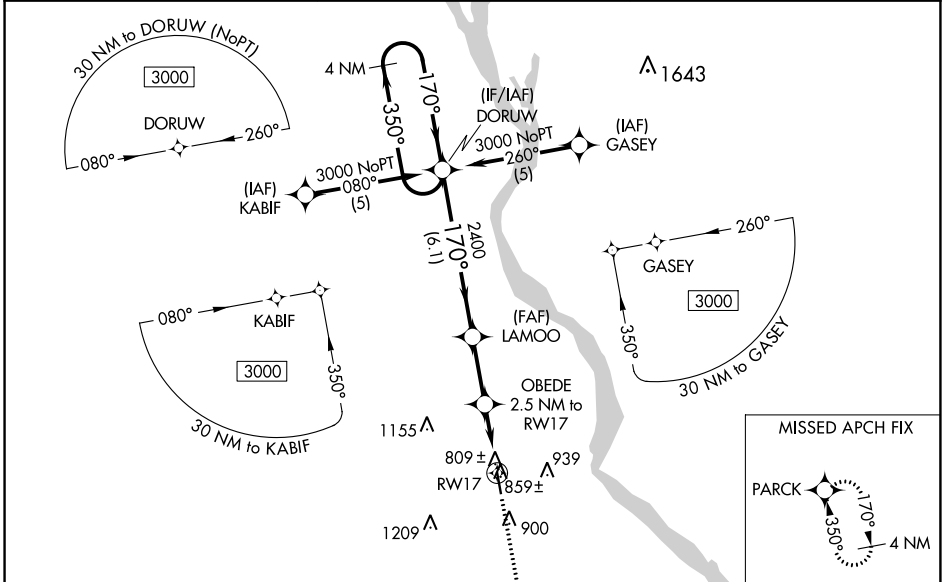
RNAV (GPS) RWY 17

HANNIBAL RGNL (H.A.E.)

⚠ For uncompensated Baro-VNAV systems, LNAV/VNAV NA below -16°C (4°F) or above 34°C (130°F).
⚠ NA DME/DME RNP-0.3 NA. Visibility reduction by helicopters NA. When local altimeter setting not received, use Quincy altimeter setting and increase all DA 41 feet, all MDA 60 feet, increase LNAV Cat C visibility ¼ mile. Baro-VNAV and VDP NA when using Quincy altimeter setting.

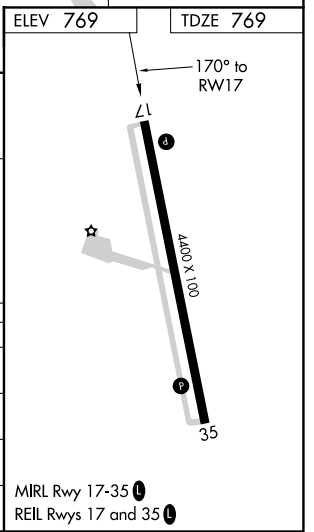
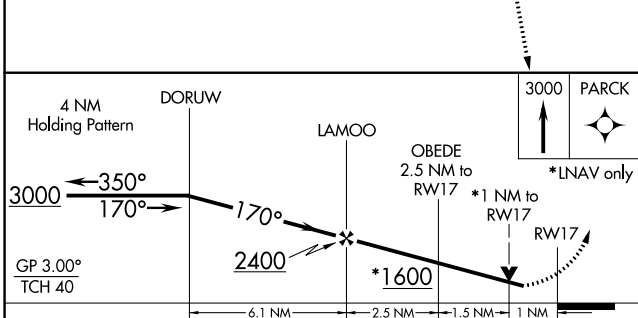
MISSED APPROACH: Climb to 3000 direct PARCK and hold.

AWOS-3 120.775	KANSAS CITY CENTER 126.225 317.775	UNICOM 122.8 (CTAF) 0
--------------------------	--	---------------------------------



NC-3, 25 FEB 2021 to 25 MAR 2021

NC-3, 25 FEB 2021 to 25 MAR 2021



CATEGORY	A	B	C	D
LPV DA	1019-1	250 (300-1)		NA
LNAV/VNAV DA	1079-1¼	310 (400-1¼)		NA
LNAV MDA	1120-1	351 (400-1)		NA
CIRCLING	1260-1	491 (500-1)	1260-1½ 491 (500-1½)	NA

MIRL Rwy 17-35 0
REIL Rwy 17 and 35 0