

VOR/DME AZO 109.0 Chan 27	APP CRS 187°	Rwy ldg TDZE Apt Elev 824	N/A N/A 824
---	------------------------	--	--

VOR-A

THREE RIVERS MUNI DR HAINES (HAI)

⚠ When local altimeter setting not received, use South Bend altimeter setting and increase all MDA 100 feet, and increase Cat C visibility 1/2 mile. Procedure NA at night. Helicopter visibility reduction below 1 SM NA.

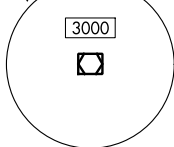
⚠ MISSED APPROACH: Climbing left turn to 2600 on heading 318° and AZO VOR/DME R-187 to RILLE INT/12 DME and hold.

AWOS-3
119.975

GREAT LAKES APP CON ★
121.2 239.25

UNICOM
122.8 (CTAF) ①

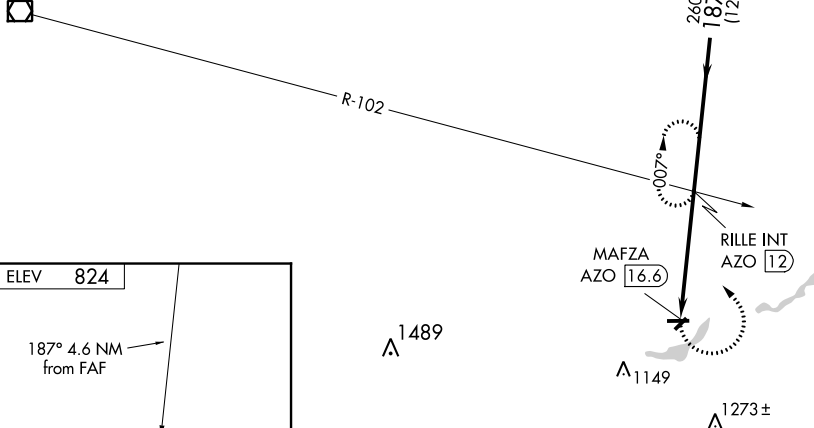
MSA AZO 25 NM



KEELER
116.6 ELX Chan 113

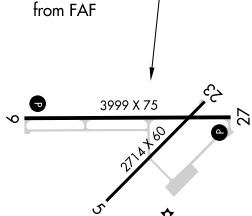
NoPT for arrival on AZO VOR/DME
airway radials 259 CW 090.

IF/IAF
KALAMZOO
109.0 AZO Chan 27



ELEV 824

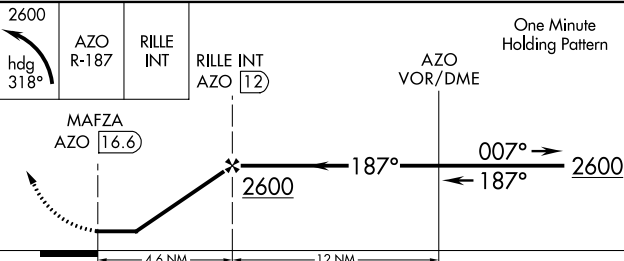
187° 4.6 NM from FAF



REIL Rwy 9 and 27
MIRL Rwy 5-23 and 9-27 ①

FAF to MAP 4.6 NM

Knots	60	90	120	150	180
Min:Sec	4:36	3:04	2:18	1:50	1:32



CATEGORY	A	B	C	D
C CIRCLING	1320-1 496 (500-1)	1420-1 596 (600-1)	1560-2 736 (800-2)	NA

EC-1, 25 FEB 2021 to 25 MAR 2021

EC-1, 25 FEB 2021 to 25 MAR 2021