

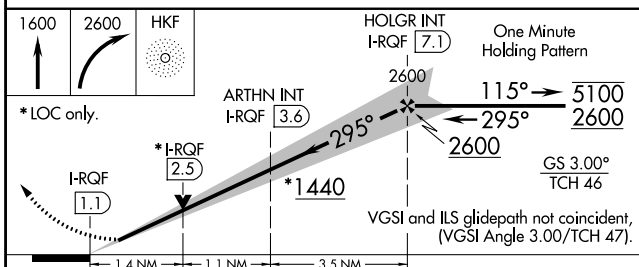
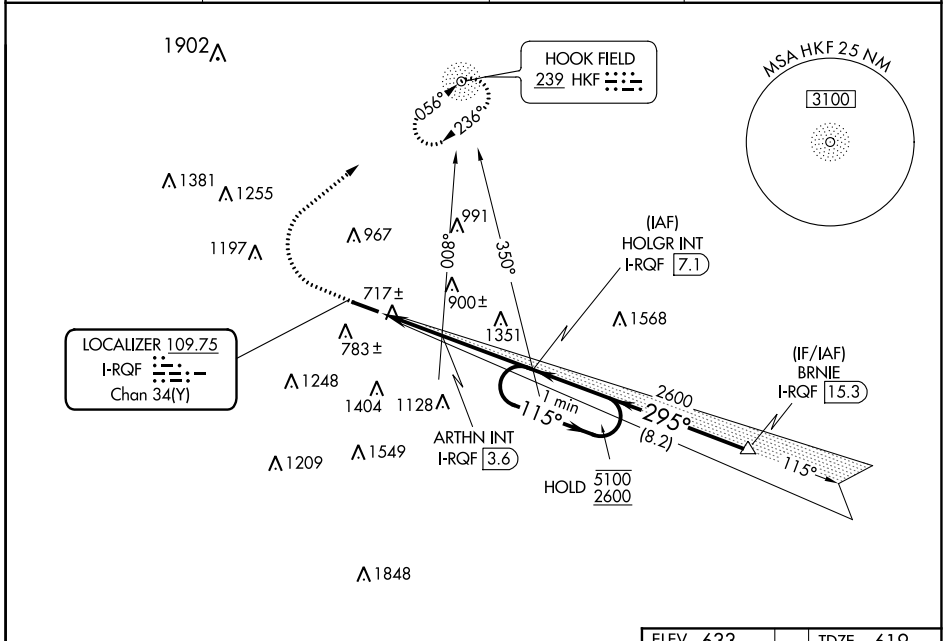
LOC/DME I-RQF <b>109.75</b> Chan <b>34 (Y)</b>	APP CRS <b>295°</b>	Rwy Idg <b>5500</b> TDZE <b>619</b> Apt Elev <b>633</b>
--	------------------------	---

# ILS or LOC RWY 29

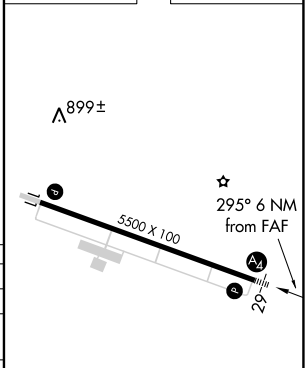
BUTLER COUNTY RGNL-HOGAN FIELD (HAO)

ADF required. DME required for LOC only.			MALS	MISSED APPROACH: Climb to 1600 then climbing right turn to 2600 direct HKF NDB and hold.
▼ Inop table does not apply to S-ILS 29. For inop ALS, increase S-LOC-29 Cat C/D visibility to 2½ SM. ARTHN fix minimums: for inop ALS, increase S-LOC 29 Cat C/D visibility to 1¾ SM. ▲				

ASOS <b>121.425</b>	CINCINNATI APP CON <b>121.0 254.25</b>	CLNC DEL <b>126.25</b>	UNICOM <b>123.05 (CTAF) 0</b>
------------------------	---	---------------------------	----------------------------------



ELEV 633	TDZE 619
----------	----------



CATEGORY	A	B	C	D
S-ILS 29	819-¾		200 (200-¾)	
S-LOC 29	1440-¾ 821 (900-¾)	1440-1 821 (900-1)	1440-2	821 (900-2)
CIRCLING	1440-1	807 (900-1)	1440-2½ 807 (900-2½)	1760-3 1127 (1200-3)
ARTHN FIX MINIMUMS				
S-LOC 29	1120-¾	501 (500-¾)	1120-1¼	501 (500-1¼)
CIRCLING	1160-1 527 (600-1)	1260-1 627 (700-1)	1300-1¾ 667 (700-1¾)	1760-3 1127 (1200-3)

MIRL Rwy 11-29					
REIL Rwy 11 and 29					
FAF to MAP 6 NM					
Knots	60	90	120	150	180
Min:Sec	6:00	4:00	3:00	2:24	2:00

EC-2, 25 FEB 2021 to 25 MAR 2021

EC-2, 25 FEB 2021 to 25 MAR 2021