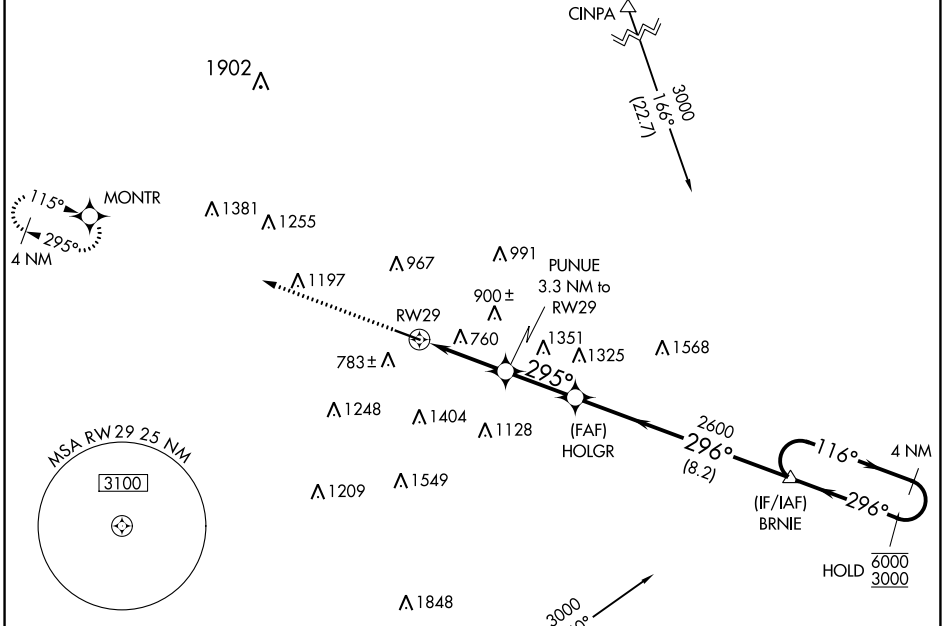


WAAS CH 61300 W29A	APP CRS 295°	Rwy Idg TDZE Apt Elev	5500 619 633
--	------------------------	-----------------------------	---

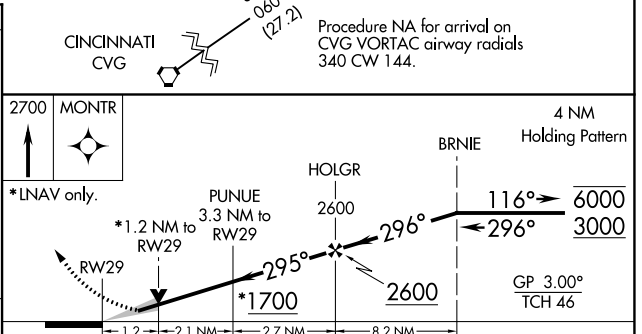
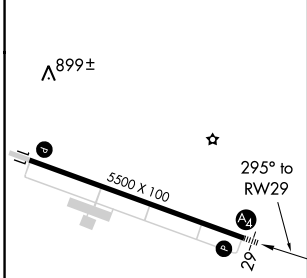
RNAV (GPS) RWY 29

BUTLER COUNTY RGNL-HOGAN FIELD (H.A.O)

RNP APCH.			MALS	MISSED APPROACH: Climb to 2700 direct MONTR and hold.
<p>⚠ For uncompensated Baro-VNAV systems, LNAV/VNAV NA below -17°C or above 54°C. ⚠ For inop ALS, increase LNAV/VNAV visibility to 1 3/8 SM all Cats.</p>			Ⓜ	
ASOS 121.425	CINCINNATI APP CON 121.0 254.25	CLNC DEL 126.25	UNICOM 123.05 (CTAF) ①	



ELEV 633	TDZE 619
-----------------	-----------------



CATEGORY	A	B	C	D
LPV DA		944-3/4	325 (400-3/4)	
LNAV/VNAV DA		1128-1 1/4	509 (500-1 1/4)	
LNAV MDA	1140-3/4	521 (600-3/4)	1140-1 1/4	521 (600-1 1/4)
C CIRCLING	1160-1 527 (600-1)	1260-1 627 (700-1)	1300-1 3/4 667 (700-1 3/4)	1760-3 1127 (1200-3)

MIRL Rwy 11-29 ①
REIL Rwy 11 and 29 ①

EC-2, 25 FEB 2021 to 25 MAR 2021

EC-2, 25 FEB 2021 to 25 MAR 2021