

WAAS CH 45918 W13A	APP CRS 128°	Rwy Idg TDZE 661 Apt Elev 663	5003 661 663
--	------------------------	---	---

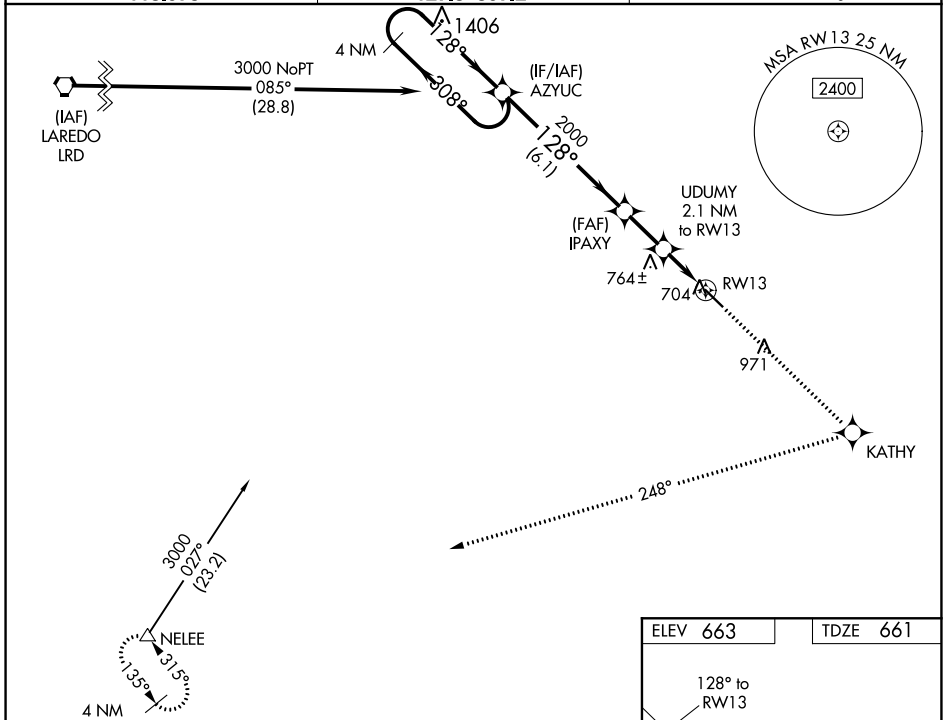
RNAV (GPS) RWY 13

JIM HOGG COUNTY (HBV)

⚠ Baro-VNAV NA when using Laredo altimeter setting. For uncompensated Baro-VNAV systems, LNAV/VNAV NA below -16°C (4°F) or above 54°C (130°F). DME/DME RNP-0.3 NA. Visibility reduction by helicopters NA. When local altimeter setting not received, use Laredo altimeter setting and increase all DA 115 feet and all MDA 120 feet; increase LPV all Cats, and LNAV Cat C visibility ¼ mile and LNAV/VNAV all Cats visibility ½ mile. VDP NA with Laredo altimeter setting.

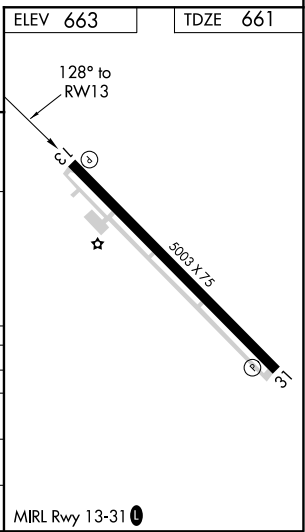
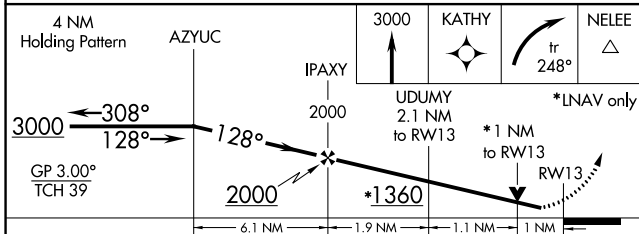
MISSED APPROACH: Climb to 3000 direct KATHY and right turn on track 248° to NELEE and hold

AWOS-3 118.075	HOUSTON CENTER 127.8 307.2	UNICOM 122.8 (CTAF) 0
--------------------------	--------------------------------------	---------------------------------



SC-3, 25 FEB 2021 to 25 MAR 2021

SC-3, 25 FEB 2021 to 25 MAR 2021



CATEGORY	A	B	C	D
LPV DA	911-1	250 (300-1)		NA
LNAV/VNAV DA	974-1	313 (400-1)		NA
LNAV MDA	1020-1	359 (400-1)		NA
CIRCLING	1020-1 357 (400-1)	1120-1 457 (500-1)	1120-1½ 457 (500-1½)	NA