


WAAS CH 45818 W18A	APP CRS 180°	Rwy ldg TDZE Apt Elev	5001 44 47
--	------------------------	-----------------------------	---------------------------------------

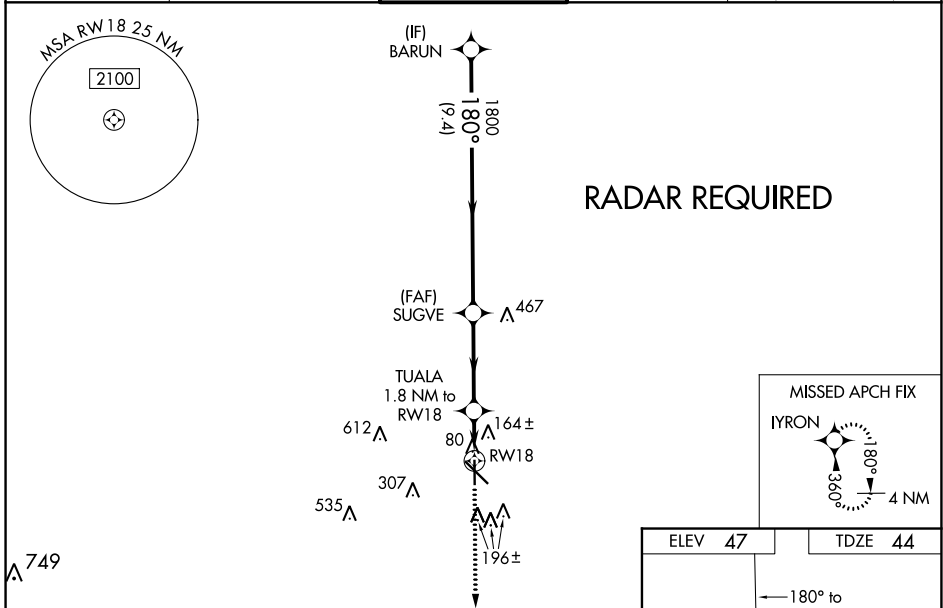
RNAV (GPS) RWY 18

HAMMOND NORTHSHORE RGNL (HDC)

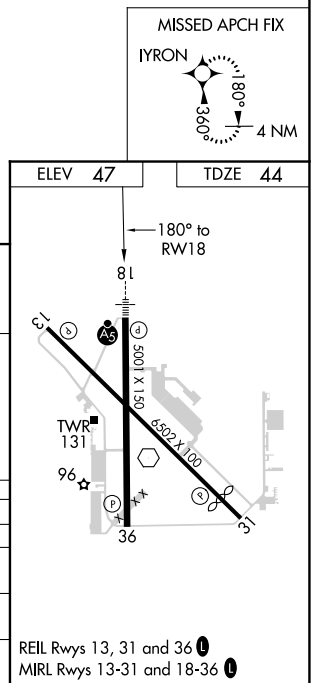
⚠ Baro-VNAV NA when using Louis Armstrong New Orleans Intl altimeter setting.
⚠ For uncompensated Baro-VNAV systems, LNAV/VNAV NA below -15°C (5°F) or above 49°C (120°F). DME/DME RNP-0.3 NA. When local altimeter setting not received, use Louis Armstrong New Orleans Intl altimeter setting and increase all DA 89 feet and all MDA 100 feet. Increase LNAV/VNAV all Cats, LNAV Cats C and D, and Circling Cat D visibility 1/4 mile. For inoperative MALS increase LNAV Cat D visibility to 1/4 mile. For inoperative MALS when using Louis Armstrong New Orleans Intl altimeter setting increase LPV all Cats visibility to 1 mile. VDP NA with Louis Armstrong New Orleans Intl altimeter setting.

MALS  MISSED APPROACH: Climb to 2200 direct IYRON and hold.

ATIS 118.325	NEW ORLEANS APP CON 119.3 350.35	HAMMOND TOWER ★ 120.575 (CTAF) 	GND CON 119.85	CLNC DEL 119.3 (When twr closed)
------------------------	--	--	--------------------------	---



	BARUN	SUGVE	TUALA	
	1800	1800	1800	2200 IYRON
	GP 3.00° TCH 52	180°	180°	*LNAV only.
	9.4 NM	3.5 NM	0.7 NM	1.1 NM
CATEGORY	A	B	C	D
LPV DA	244-1/2		200 (200-1/2)	
LNAV/VNAV DA	466-1		422 (500-1)	
LNAV MDA	460-1/2	416 (500-1/2)	460-3/4	416 (500-3/4)
CIRCLING	500-1	453 (500-1)	500-1 1/2	620-2
			453 (500-1 1/2)	573 (600-2)



SC-4, 25 FEB 2021 to 25 MAR 2021

SC-4, 25 FEB 2021 to 25 MAR 2021