

APP CRS 315°	Rwy Idg 5812
	TDZE 43
	Apt Elev 47

RNAV (GPS) RWY 31

HAMMOND NORTHSORE RGNL (HDC)

⚠ DME/DME RNP-0.3 NA. Visibility reduction by helicopters NA.
⚠ When local altimeter setting not received, use Louis Armstrong New Orleans Intl altimeter setting and increase all MDA 100 feet, and increase LNAV Cat C and Circling Cat D visibility ¼ mile and LNAV Cat D visibility ½ mile.
 VDP NA with Louis Armstrong New Orleans Intl altimeter setting.

MISSED APPROACH: Climb to 2000 direct HEVOT and hold.

ATIS
118.325

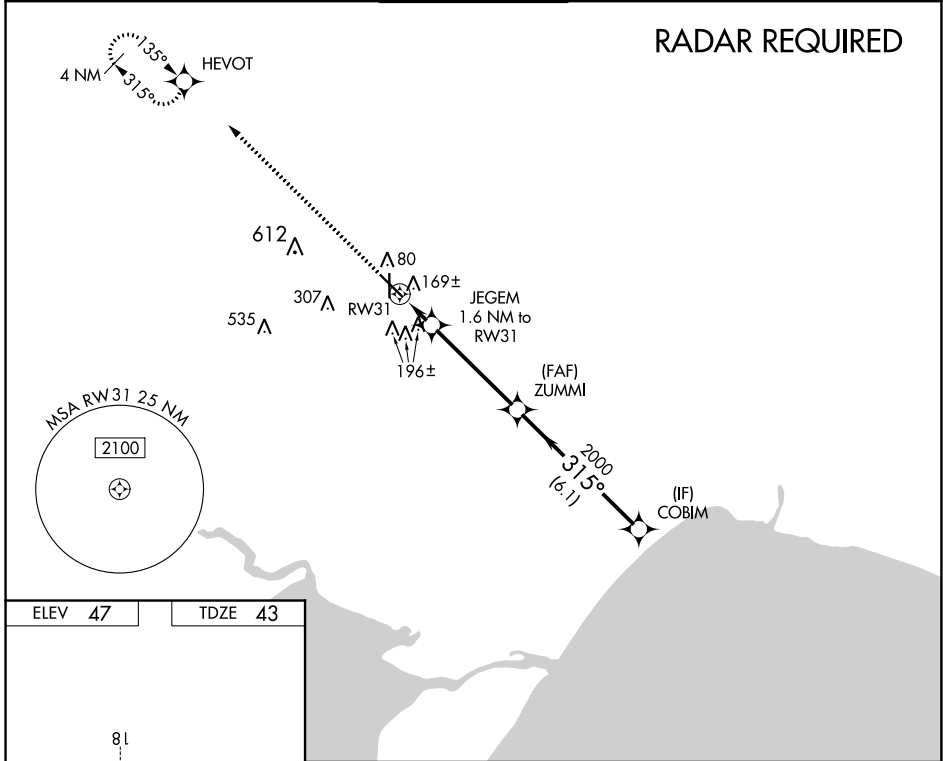
NEW ORLEANS APP CON
119.3 350.35

HAMMOND TOWER ★
120.575 (CTAF) **0**

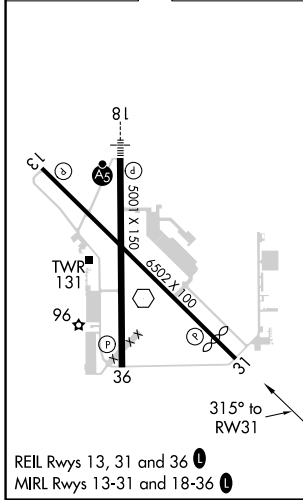
GND CON
119.85

CLNC DEL
119.3
(When twr closed)

RADAR REQUIRED



ELEV **47** TDZE **43**



2000	HEVOT	ZUMMI		COBIM
		JEGEM 1.6 NM to RW31		
		1.1 NM to RW31	2000	2000
		3.05° VGSi and descent angles not coincident (VGSi Angle 3.30/TCH 50)		
		1.1	0.5	4.3 NM
				6.1 NM
CATEGORY	A	B	C	D
LNAV MDA	460-1	417 (500-1)	460-1¼	417 (500-1¼)
CIRCLING	500-1	453 (500-1)	500-1½ 453 (500-1½)	620-2 573 (600-2)

SC-4, 25 FEB 2021 to 25 MAR 2021

SC-4, 25 FEB 2021 to 25 MAR 2021