

| | | | |
|--|------------------------|-----------------------------|---------------------------------------|
| WAAS CH 42718 W36A | APP CRS 360° | Rwy ldg TDZE Apt Elev | 5001 43 47 |
|--|------------------------|-----------------------------|---------------------------------------|

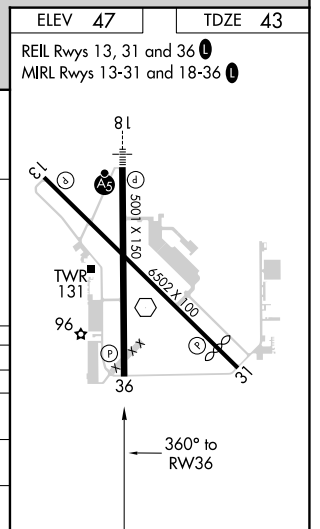
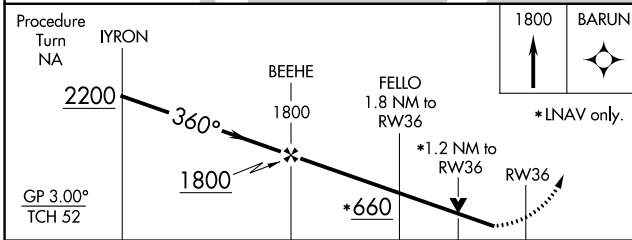
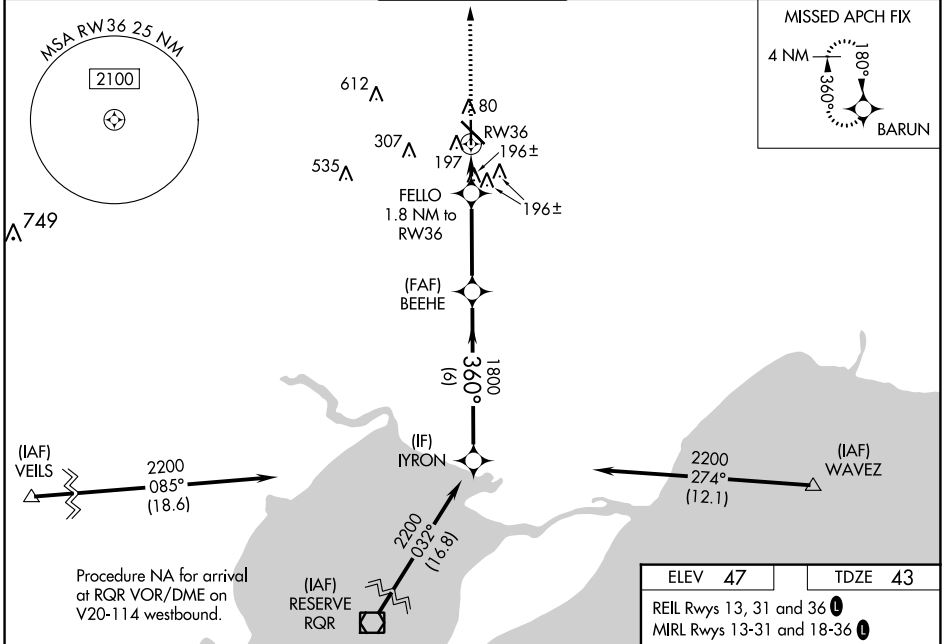
RNAV (GPS) RWY 36

HAMMOND NORTHSORE RGNL (HDC)

⚠ Baro-VNAV NA when using Louis Armstrong New Orleans Intl altimeter setting.
⚠ For uncompensated Baro-VNAV systems, LNAV/VNAV NA below -15°C (5°F) or above 49°C (120°F). DME/DME RNP-0.3 NA. Visibility reduction by helicopters NA.
 When local altimeter setting not received, use Louis Armstrong New Orleans Intl altimeter setting and increase all DA 89 feet and all MDA 100 feet, increase LPV all Cats visibility ½ mile, LNAV/VNAV all Cats ¼ mile, LNAV Cat C and Circling Cat D ¼ mile, and LNAV Cat D ½ mile. VDP NA with Louis Armstrong New Orleans Intl altimeter setting.

MISSED APPROACH: Climb to 1800 direct BARUN and hold.

| | | | | |
|------------------------|--|--|--------------------------|---|
| ATIS 118.325 | NEW ORLEANS APP CON 119.3 350.35 | HAMMOND TOWER * 120.575 (CTAF) 0 | GND CON 119.85 | CLNC DEL 119.3 (When twr closed) |
|------------------------|--|--|--------------------------|---|



| | | | | |
|--------------------|--------|-------------|--------------|--------------|
| GP 3.00° TCH 52 | 6 NM | 3.5 NM | 0.6 NM | 1.2 NM |
| CATEGORY | A | B | C | D |
| LPV DA | 293-¾ | | 250 (300-¾) | |
| LNAV/VNAV DA | 447-1½ | | 404 (400-1½) | |
| LNAV MDA | 460-1 | 417 (500-1) | 460-1¼ | 417 (500-1¼) |
| CIRCLING | 500-1 | 453 (500-1) | 500-1½ | 620-2 |
| | | | 453 (500-1½) | 573 (600-2) |

SC-4, 25 FEB 2021 to 25 MAR 2021

SC-4, 25 FEB 2021 to 25 MAR 2021