


LOC I-HHR	APP CRS	Rwy Idg	4193
109.1	253°	TDZE	63
		Apt Elev	66

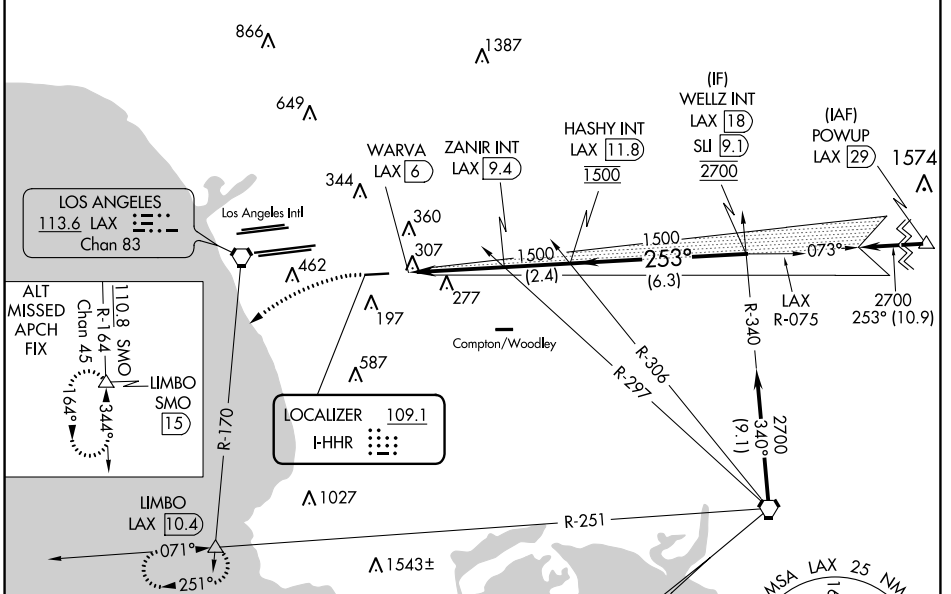
LOC RWY 25

JACK NORTHROP FIELD/HAWTHORNE MUNI (HHR)

⚠ Inop table does not apply to Cat C. Rwy 25 helicopter visibility reduction below 3/4 SM NA. Circling NA when control tower closed. When local altimeter setting not received, use Los Angeles Intl altimeter setting. Simultaneous approach authorized with LAX 25L/R 24L/R. Circling NA north of Rwy 7-25. DME from LAX VORTAC. Simultaneous reception of I-HHR and LAX DME required.

ODALS

MISSED APPROACH: Climbing left turn to 3000 on heading 210° and LAX VORTAC R-170 to LIMBO INT/LAX 10.4 DME and hold.

ATIS 118.4	SOCAL APP CON 124.9 269.0	HAWTHORNE TOWER* 121.1(CTAF) 0 257.8	GND CON 125.1
----------------------	-------------------------------------	--	-------------------------

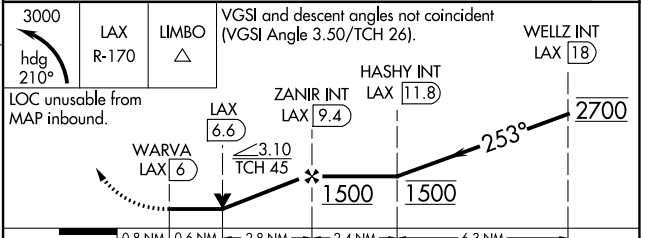


ELEV 66	D	TDZE 63
---------	----------	---------

TWR 135
 4884 X 100
 253° 4.2 NM from FAF

REIL Rwy 25
 MIRL Rwy 7-25

Procedure NA for arrivals at SLI VORTAC on V459-597 southeast bound.



CATEGORY	A	B	C	D
S-25	580-3/4	517 (600-3/4)	580-13/8	517 (600-13/8)
C CIRCLING	620-1	554 (600-1)	780-2 714 (800-2)	780-2 1/4 714 (800-2 1/4)

LOC RWY 25

SW-3, 25 FEB 2021 to 25 MAR 2021

SW-3, 25 FEB 2021 to 25 MAR 2021