

WAAS CH 65825 W25A	APP CRS 253°	Rwy Idg TDZE 63 Apt Elev 66
--	------------------------	---

RNAV (GPS) RWY 25

JACK NORTHROP FIELD/HAWTHORNE MUNI (HHR)

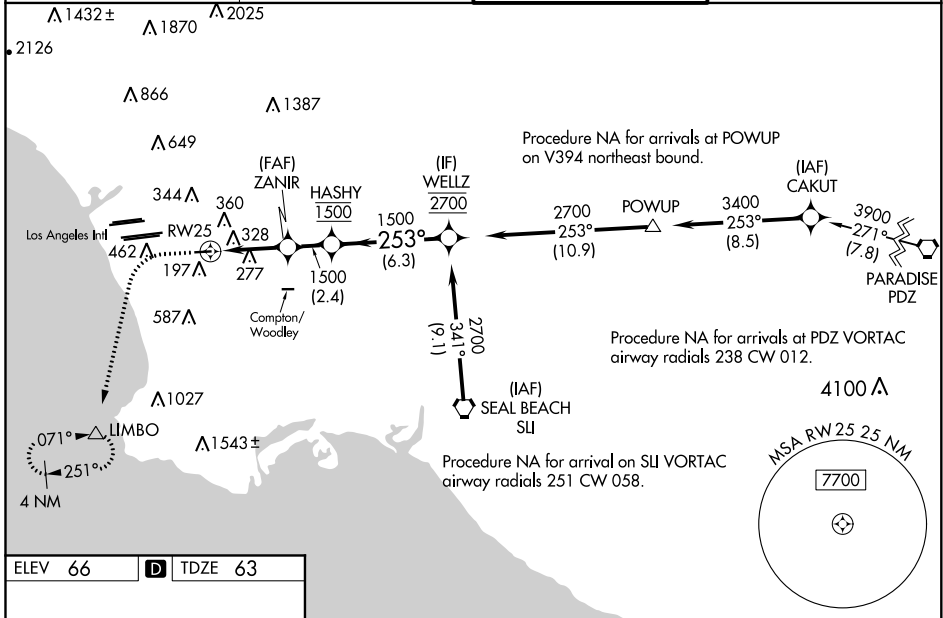
RNP APCH.

⚠ Circling NA north of Rwy 7-25. Procedure NA at night. Rwy 25 helicopter visibility reduction below 1 SM NA. For uncompensated Baro-VNAV systems, procedure NA below 6°C or above 54°C. Circling NA when control tower closed. For inop ALS increase LNAV/VNAV Cats A/B visibilities to 1 3/4 SM. Inop table does not apply to LPV and LNAV. Simultaneous approach authorized with LAX 25L/R, 24L/R. LNAV and LNAV/VNAV only approach NA during simultaneous operations. Use of FD or AP providing RNAV track guidance required during simultaneous operations.

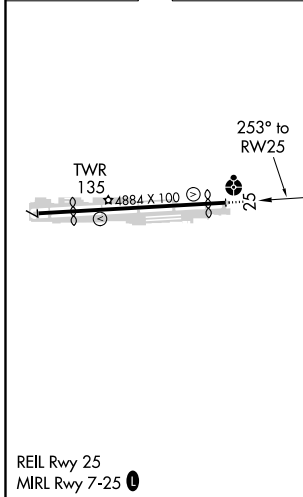
ODALS

MISSED APPROACH: Climb to 800 then climbing left turn to 3000 direct LIMBO and hold, continue climb-in-hold to 3000.

ATIS 118.4	SOCAL APP CON 124.9 269.0	HAWTHORNE TOWER ★ 121.1(CTAF) 0 257.8	GND CON 125.1
----------------------	-------------------------------------	---	-------------------------



ELEV 66	D	TDZE 63
----------------	----------	----------------



800 3000 LIMBO VGSI and RNAV glidepath not coincident (VGSI Angle 3.50/TCH 26).

WELLY 2700
ZANIR 1500
HASHY 1500
RWY 25 253°

GP 3.07°
TCH 57

	4.2 NM	2.4 NM	6.3 NM	
CATEGORY	A	B	C	D
LPV DA		576-1 3/8	513 (600-1 3/8)	
LNAV/VNAV DA		653-1 3/8	590 (600-1 3/8)	
LNAV MDA	580-1	517 (600-1)	580-1 3/8	517 (600-1 3/8)
C CIRCLING	620-1	554 (600-1)	780-2 714 (800-2)	780-2 1/4 714 (800-2 1/4)

SW-3, 25 FEB 2021 to 25 MAR 2021

SW-3, 25 FEB 2021 to 25 MAR 2021