

WAAS CH 69502 W13A	APP CRS 127°	Rwy Idg TDZE Apt Elev	6600 203 208
---------------------------------	------------------------	-----------------------------	---

RNAV (GPS) RWY 13R

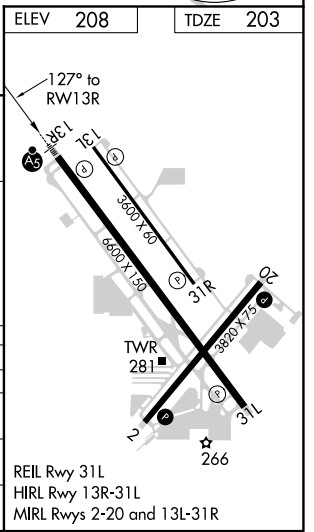
PORTLAND-HILLSBORO (HIO)

RNP APCH.	MALSRS	MISSED APPROACH: Climb to 1000 then climbing right turn to 3000 direct UBG VOR/DME and hold. Continue climb-in-hold to 3000.
<p>⚠ Circling to Rwy 13L-31R NA at night. For uncompensated Baro-VNAV systems, LNAV/VNAV NA below -18°C or above 54°C. For inop ALS, increase LNAV Cat A/B visibility to RVR 5500 and Cat C/D to 1 3/8 SM.</p> <p># RVR 1800 authorized with use of FD or AP or HUD to DA.</p>		

ATIS 127.65	PORTLAND APP CON 126.0 269.175	HILLSBORO TOWER * 119.3 (CTAF) 239.3	GND CON 121.7	UNICOM 122.95
-----------------------	--	--	-------------------------	-------------------------



	DUCKA		COUVE		DOLLA		1000	3000	UBG
	4 NM Holding Pattern						JIKIM		
	6000	←307°	127°→	3300			4.4 NM to RW13R		*LNAV only.
	3900						*1.3 NM to RW13R		
	GP 3.00° TCH 48								
			7.4 NM	3.2 NM	3.9 NM	3.1	1.3		
CATEGORY	A		B		C		D		
LPV DA#			403/24		200 (200-1/2)				
LNAV/VNAV DA			661/45		458 (500-7/8)				
LNAV MDA	660/40		457 (500-3/4)		660/50		457 (500-1)		
CIRCLING	680-1 472 (500-1)		720-1 512 (600-1)		720-1 1/2 512 (600-1 1/2)		980-2 1/2 772 (800-2 1/2)		



NW-1, 25 FEB 2021 to 25 MAR 2021

NW-1, 25 FEB 2021 to 25 MAR 2021