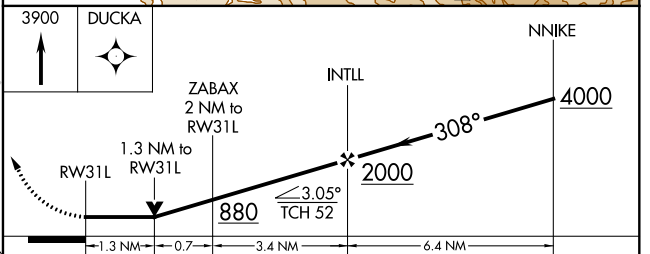
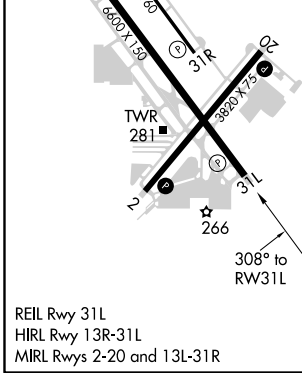
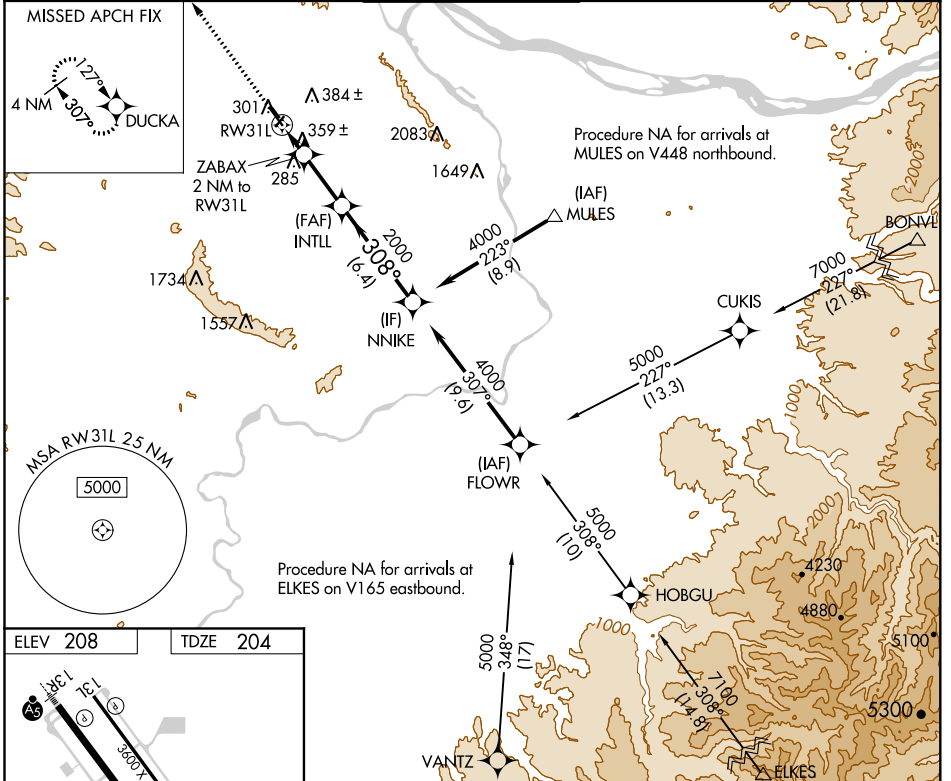


APP CRS	Rwy Idg	<b>6600</b>
<b>308°</b>	TDZE	<b>204</b>
	Apt Elev	<b>208</b>

# RNAV (GPS) RWY 31L

PORTLAND-HILLSBORO (HIO)

RNP APCH.		MISSED APPROACH: Climb to 3900 direct DUCKA and hold.		
<p><b>▼</b> Circling to Rwy 13L, 31R NA at night. Rwy 31L helicopter visibility reduction below 3/4 SM NA.</p>				
ATIS	PORTLAND APP CON	HILLSBORO TOWER ★	GND CON	UNICOM
<b>127.65</b>	<b>126.0 269.175</b>	<b>119.3 (CTAF) 239.3</b>	<b>121.7</b>	<b>122.95</b>



CATEGORY	A	B	C	D
LNAV MDA	660-1	456 (500-1)	660-1 3/8	456 (500-1 1/2)
<b>C</b> CIRCLING	680-1	720-1	720-1 1/2	980-2 1/2
	472 (500-1)	512 (600-1)	512 (600-1 1/2)	772 (800-2 1/2)

NW-1, 25 FEB 2021 to 25 MAR 2021

NW-1, 25 FEB 2021 to 25 MAR 2021