

LOC I-JHF 111.7	APP CRS 159°	Rwy Idg 5387 TDZE 341 Apt Elev 341
---------------------------	------------------------	---

ILS or LOC RWY 16

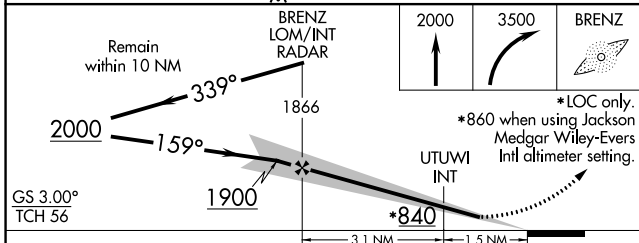
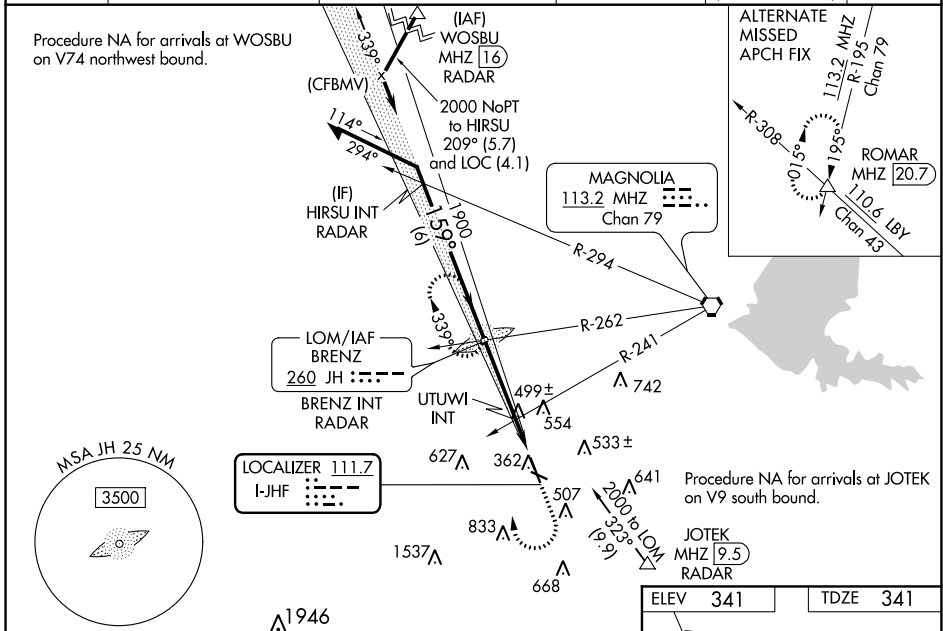
HAWKINS FIELD (HKS)

▼ When local altimeter setting not received, use Jackson Medgar Wiley-Evers Intl altimeter setting, increase all DA 19 feet and all MDA 20 feet. Increase Circling Cat C visibility 1/4 mile and UTUWI fix Circling Cat C visibility 1/4 mile. For inop MALS, increase S-LOC 16 Cats C/D visibility 3/8. Increase UTUWI fix S-LOC 16 Cats C/D visibility 3/8. For inop MALS when using Jackson Medgar Wiley-Evers Intl altimeter setting increase S-LOC Cats C/D visibility 3/8 mile. Glideslope unusable when control tower closed, only localizer minimums authorized during this period. ADF required.

MALS

MISSED APPROACH:
Climb to 2000 then climbing right turn to 3500 direct BRENZ LOM and hold.

ASOS 120.625	JACKSON APP CON * 123.9 319.2	HAWKINS TOWER * 119.65 (CTAF) 257.8	GND CON 121.9 239.0	CLNC DEL 121.9 (when twr closed)	UNICOM 122.95
------------------------	---	---	-------------------------------	---	-------------------------



ELEV	341	TDZE	341
------	-----	------	-----

REIL Rwy 34 **1**
HIRL Rwy 16-34 **1**
MIRL Rwy 11-29

FAF to MAP 4.6 NM

Knots	60	90	120	150	180
Min:Sec	4:36	3:04	2:18	1:50	1:32

CATEGORY	A	B	C	D
S-ILS 16		541-1/2	200 (200-1/2)	
S-LOC 16	840-1/2	499 (500-1/2)	840-1	499 (500-1)
C CIRCLING	860-1 519 (600-1)	880-1 539 (600-1)	1140-2 1/4 799 (800-2 1/4)	1320-3 979 (1000-3)
UTUWI FIX MINIMUMS (DUAL VOR RECEIVERS REQUIRED)				
S-LOC 16	760-1/2	419 (500-1/2)	760-3/4	419 (500-3/4)
C CIRCLING	860-1 519 (600-1)	880-1 539 (600-1)	1140-2 1/4 799 (800-2 1/4)	1320-3 979 (1000-3)

HAWKINS FIELD (HKS)

ILS or LOC RWY 16

SC-4, 25 FEB 2021 to 25 MAR 2021

SC-4, 25 FEB 2021 to 25 MAR 2021