

WAAS CH 58240 W21A	APP CRS 213°	Rwy Idg TDZE 1194 Apt Elev 1194	5002
--	------------------------	---	-------------

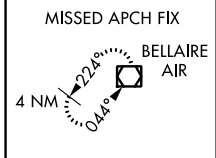
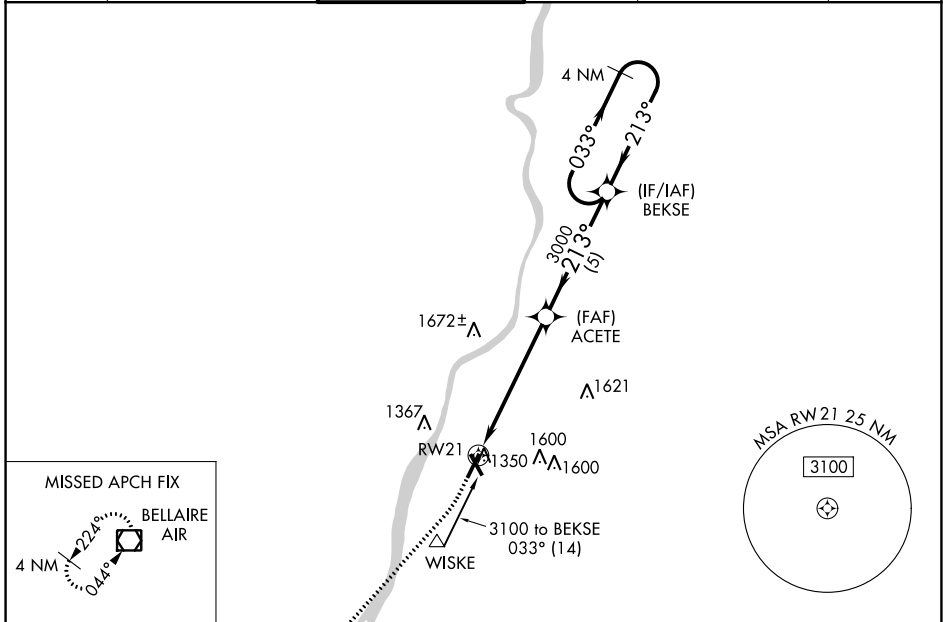
RNAV (GPS) RWY 21

WHEELING OHIO COUNTY (HLG)

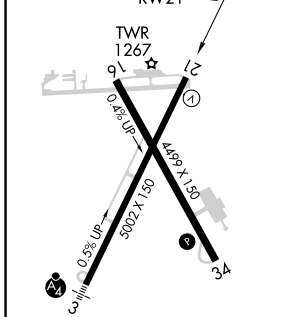
⚠ For uncompensated Baro-VNAV systems, procedure NA below -17°C (2°F) or above 54°C (130°F). Rwy 21 helicopter visibility reduction below ¾ SM NA. DME/DME RNP-0.3 NA.

MISSED APPROACH: Climb to 1700 then climbing right turn to 3100 direct AIR VOR/DME and hold.

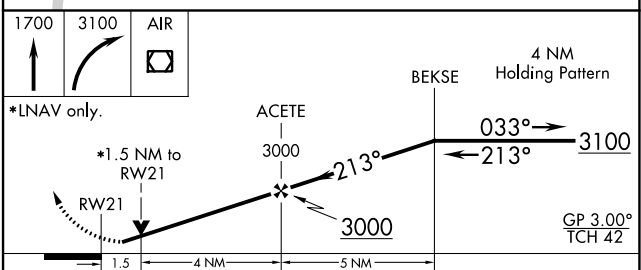
ASOS 127.375	PITTSBURGH APP CON 125.275 285.575	WHEELING TOWER * 118.1(CTAF) 0257.8	GND CON 121.75	CLNC DEL 125.275 (when twr closed)	UNICOM 122.95
------------------------	--	--	--------------------------	---	-------------------------



ELEV 1194	TDZE 1194
------------------	------------------



HIRL Rwy 3-21 **Ⓛ**
MIRL Rwy 16-34 **Ⓛ**
REIL Rwy 21 and 34 **Ⓛ**



CATEGORY	A	B	C	D
LPV DA		1444-1	250 (300-1)	
LNAV/VNAV DA		1653-1½	459 (500-1½)	
LNAV MDA	1700-1	506 (600-1)	1700-1½	506 (600-1½)
C CIRCLING	1720-1 526 (600-1)	1740-1 546 (600-1)	1900-2 706 (800-2)	1920-2¼ 726 (800-2¼)

NE-4, 25 FEB 2021 to 25 MAR 2021

NE-4, 25 FEB 2021 to 25 MAR 2021