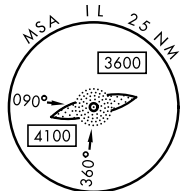
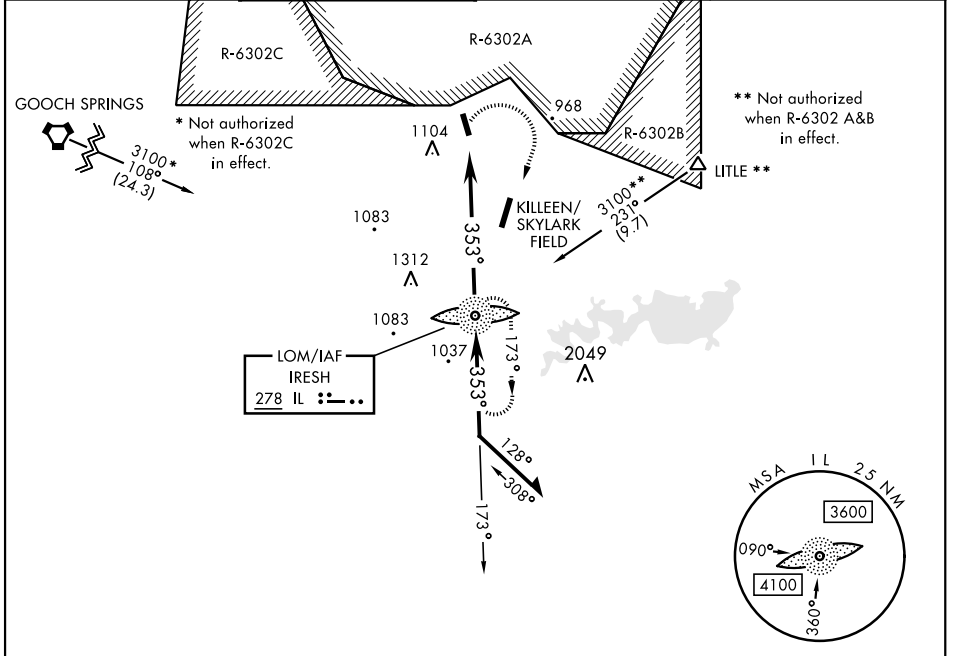


LOM IL <b>278</b>	APCH CRS <b>353°</b>	Rwy ldg TDZE Arprt Elev <b>3701</b> <b>914</b> <b>923</b>	AL-5031 [USA]	HOOD AHP (KHLR)
----------------------	-------------------------	--	---------------	-----------------

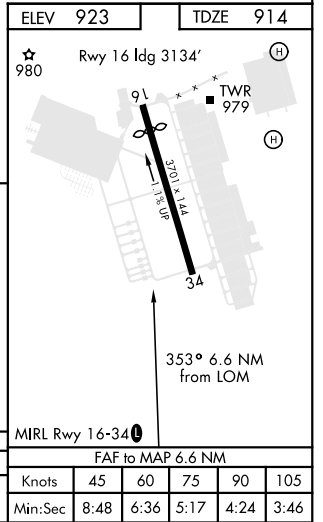
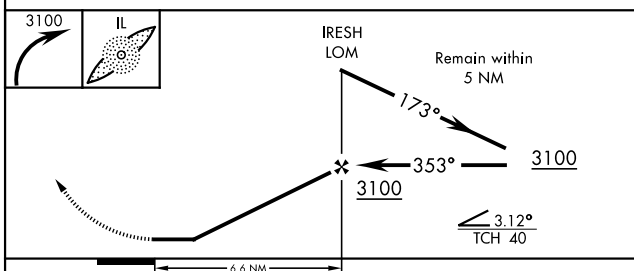
**NA** MISSED APPROACH: Climbing right turn to 3100 direct IL LOM and hold.

GRAY APP CON <b>120.075 323.15</b>	HOOD TOWER ★ <b>119.65 269.45</b>	GND CON <b>133.85 225.4</b>	CLNC DEL <b>225.4</b>
---------------------------------------	--------------------------------------	--------------------------------	--------------------------



Limit all segments  
airspeed to 90 KIAS.

When local altimeter setting not received,  
use SKYLARK FIELD altimeter setting.



CATEGORY	COPTER								
	FAF to MAP 6.6 NM								
	Knots	45	60	75	90	105			
S-34	1400-¾	486	(500-¾)	Min:Sec	8:48	6:36	5:17	4:24	3:46

SC-3, 25 FEB 2021 to 25 MAR 2021

SC-3, 25 FEB 2021 to 25 MAR 2021