

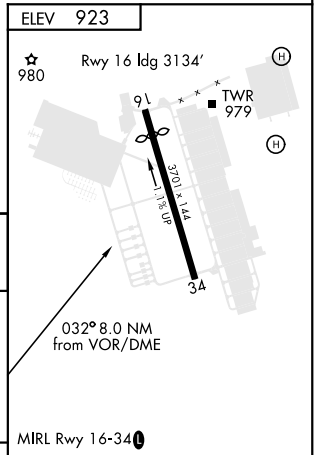
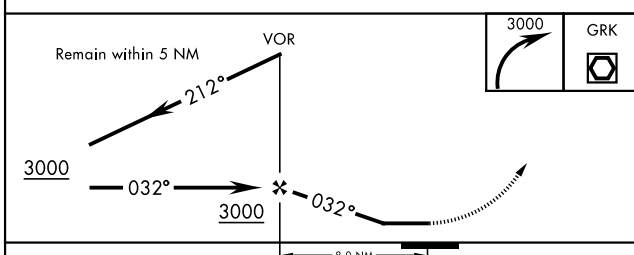
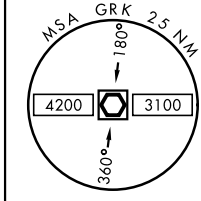
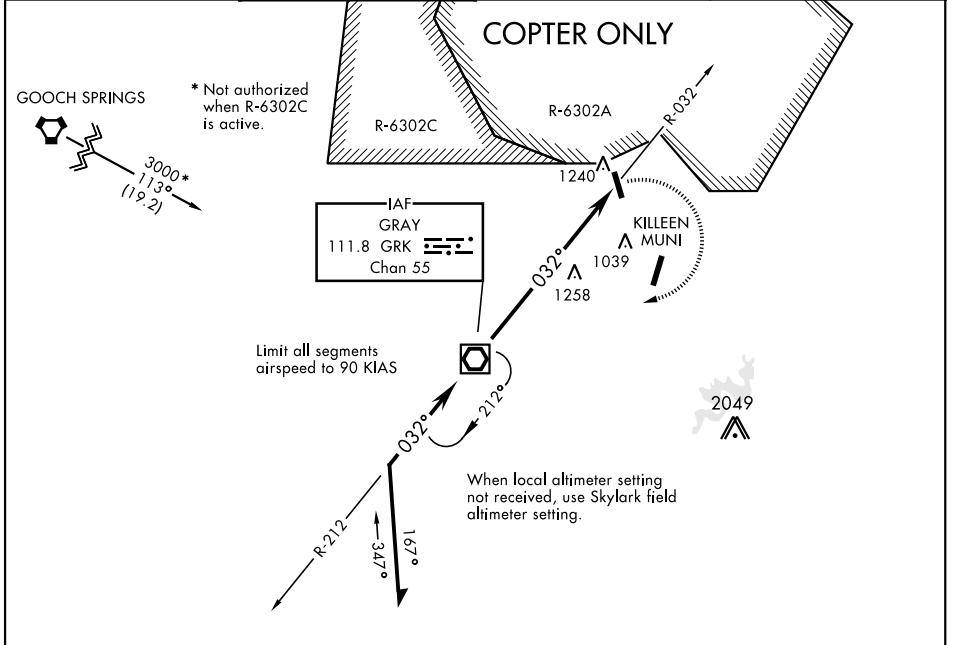
FORT HOOD (KILLEEN), TEXAS

# COPTER VOR 032°

VOR/DME GRK <b>111.8</b> Chan <b>55</b>	APCH CRS <b>032°</b>	Rwy ldg TDZE <b>N/A</b> Arprt Elev <b>923</b>	AL-5031 [USA]	HOOD AHP (KHLR)
---	-------------------------	--	---------------	-----------------

**▼** MISSED APPROACH: Climbing right turn to 3000 direct to GRK VOR/DME and hold.

GRAY APP CON <b>120.075 323.15</b>	HOOD TOWER ★ <b>119.650 269.45</b>	GND CON <b>133.85 225.4</b>	CLNC DEL <b>225.4</b>
---------------------------------------	---------------------------------------	--------------------------------	--------------------------



CATEGORY	COPTER				
	H-032°	1600- $\frac{3}{4}$	676	(700- $\frac{3}{4}$ )	
FAF to MAP 8.0 NM					
Knots	45	60	75	90	105
Min:Sec	10:40	8:00	6:24	5:20	4:34

FORT HOOD (KILLEEN), TEXAS  
Amdt 3 20366

31°09'N-97°43'W

HOOD AHP (KHLR)

# COPTER VOR 032°

SC-3, 25 FEB 2021 to 25 MAR 2021

SC-3, 25 FEB 2021 to 25 MAR 2021