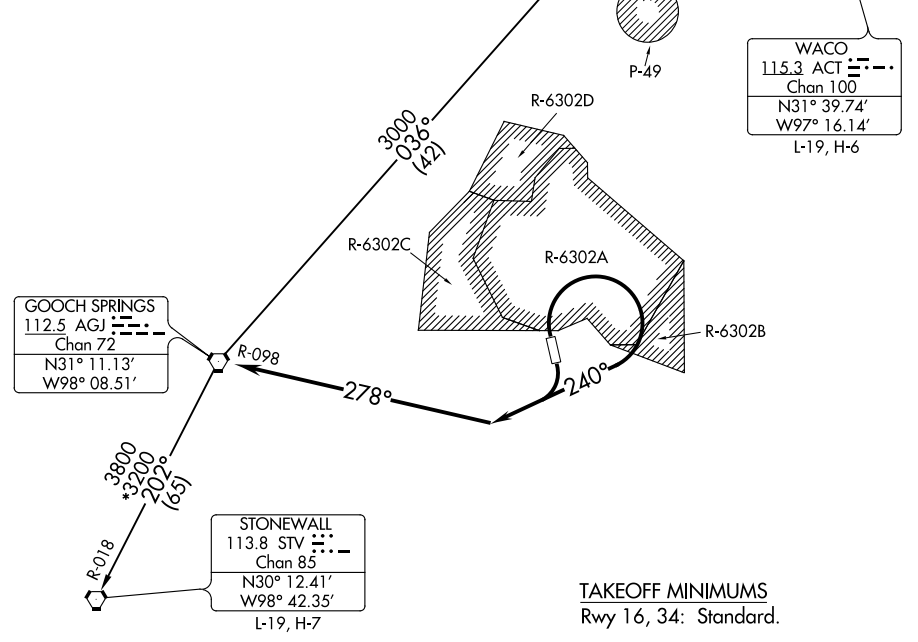


LAMPS SEVEN DEPARTURE

CLNC DEL
225.4
GND CON
133.85 225.4
HOOD TOWER★
119.65 269.45
GRAY DEP CON
120.075 323.15

**TOP ALTITUDE:
ASSIGNED BY ATC**



SC-3, 25 FEB 2021 to 25 MAR 2021

SC-3, 25 FEB 2021 to 25 MAR 2021

NOTE: RADAR required.
NOTE: WACO TRANSITION for aircraft inbound to terminal area airports.

NOTE: Chart not to scale.

DEPARTURE ROUTE DESCRIPTION

TAKEOFF RWY 16, 34: Climbing right turn heading 240° (to assigned altitude) to intercept and proceed on AGJ R-098. Thence

. . . . on (transition) or (assigned route).

STONEWALL TRANSITION (LAMPS7.STV): From over AGJ VORTAC on AGJ R-202 and STV R-018 to STV VORTAC.

WACO TRANSITION (LAMPS7.ACT): From over AGJ VORTAC on AGJ R-036 to SONET INT, then on ACT R-271 to ACT VORTAC.

LAMPS SEVEN DEPARTURE

(LAMPS7.AGJ) 10OCT19

FORT HOOD/KILLEEN, TEXAS
HOOD AHP (HLR)