

WAAS CH 72916 W14A	APP CRS 137°	Rwy Idg TDZE 1157 Apt Elev 1162	5005
--	------------------------	---	-------------

RNAV (GPS) RWY 14

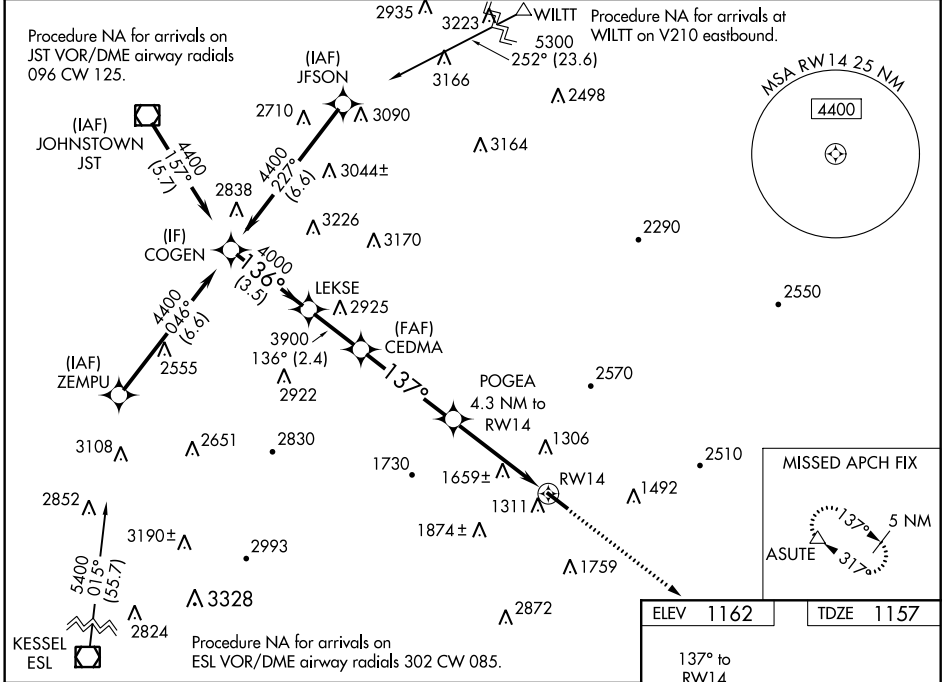
BEDFORD COUNTY (HMIZ)

RNP APCH.

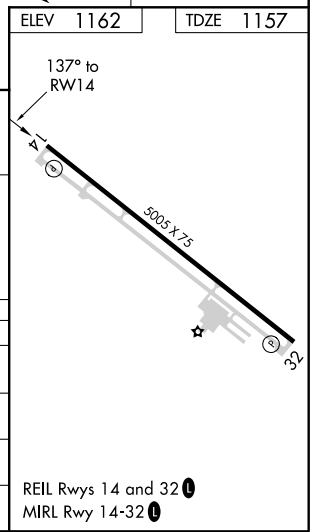
⚠ For uncompensated Baro-VNAV systems, LNAV/VNAV NA below -17°C or above 54°C.

MISSED APPROACH: Climb to 5000 direct ASUTE and hold, continue climb-in-hold to 5000.

AWOS-3 123.675	JOHNSTOWN APP CON * 121.2 299.2	UNICOM 122.7 (CTAF) 0
--------------------------	---	---------------------------------



COGEN	LEKSE	CEDMA	POGEA	ASUTE
4400	3900	3900	4.3 NM to RW14	5000
136°	137°	137°	2.3 NM to RW14	ASUTE
3.5 NM	2.4 NM	4.2 NM	2 NM	2.3 NM
GP 3.00° TCH 41				
CATEGORY	A	B	C	D
LPV DA	1640-1½		483 (500-1½)	
LNAV/VNAV DA	2050-4		893 (900-4)	
LNAV MDA	1920-1 763 (800-1)	1920-1¼ 763 (800-1¼)	1920-2½	763 (800-2½)
CIRCLING	1920-1 758 (800-1)	1960-1¼ 798 (800-1¼)	2200-3 1038 (1100-3)	2940-3 1778 (1800-3)



NE-4, 25 FEB 2021 to 25 MAR 2021

NE-4, 25 FEB 2021 to 25 MAR 2021