

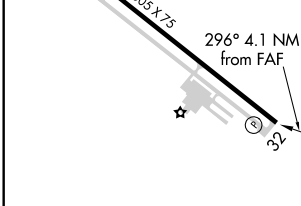
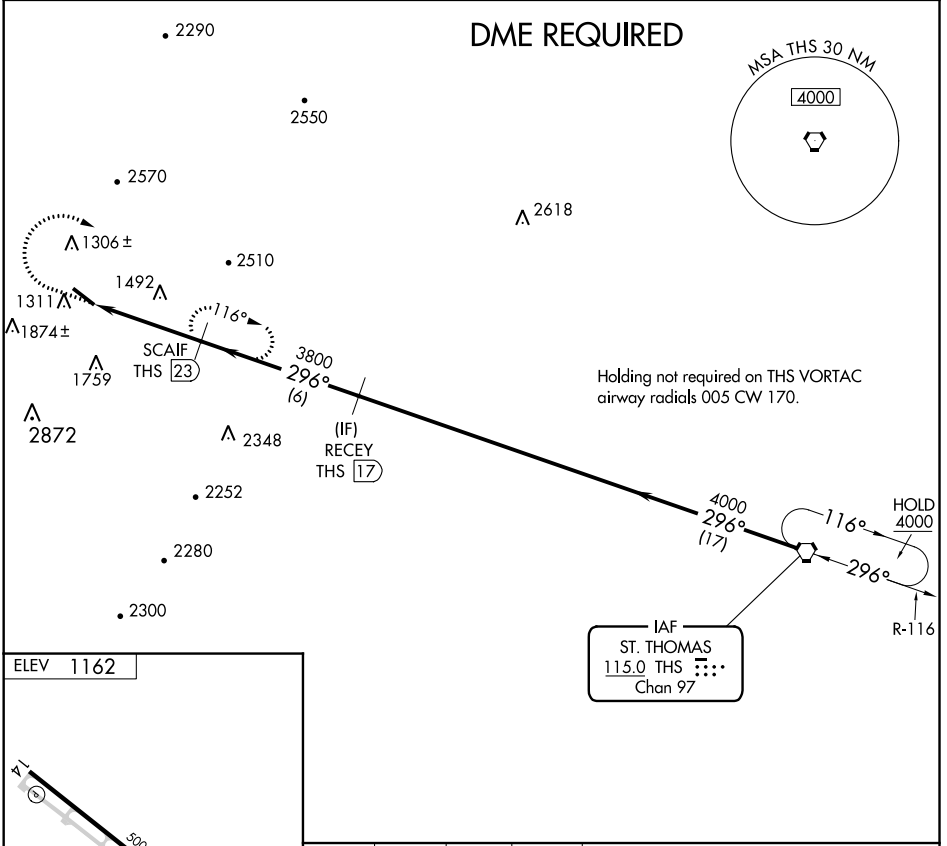
VORTAC THS 115.0 Chan 97	APP CRS 296°	Rwy Idg TDZE Apt Elev	N/A N/A 1162
--	------------------------	-----------------------------	---

VOR-A
BEDFORD COUNTY (HMZ)

▽ Helicopter visibility reduction below 3/4 SM NA.
▲ DME required.

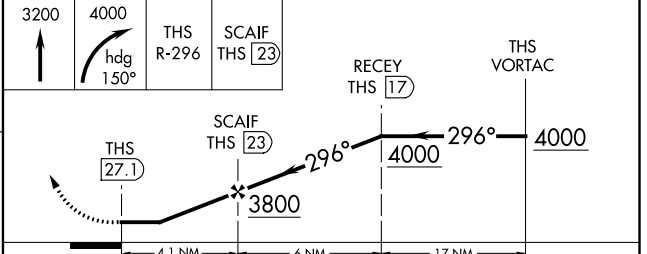
MISSED APPROACH: Climb to 3200 then climbing right turn to 4000 on heading 150° and on THS VORTAC R-296 to SCAIF/23 DME and hold.

AWOS-3 123.675	JOHNSTOWN APP CON * 121.2 299.2	UNICOM 122.7 (CTAF) 0
--------------------------	---	---------------------------------



REIL Rwys 14 and 32
MIRL Rwy 14-32

FAF to MAP 4.1 NM					
Knots	60	90	120	150	180
Min:Sec	4:06	2:44	2:03	1:38	1:22



	CATEGORY	A	B	C	D
<input checked="" type="checkbox"/> CIRCLING		2700-1¼ 1538 (1600-1¼)	2700-1½ 1538 (1600-1½)	2700-3 1538 (1600-3)	2940-3 1778 (1800-3)

NE-4, 25 FEB 2021 to 25 MAR 2021

NE-4, 25 FEB 2021 to 25 MAR 2021