

LOC/DME I-HOB	APP CRS	Rwy Idg	7020
108.5	038°	TDZE	3652
Chan 22		Apt Elev	3661

ILS or LOC RWY 3

LEA COUNTY RGNL (HOB)

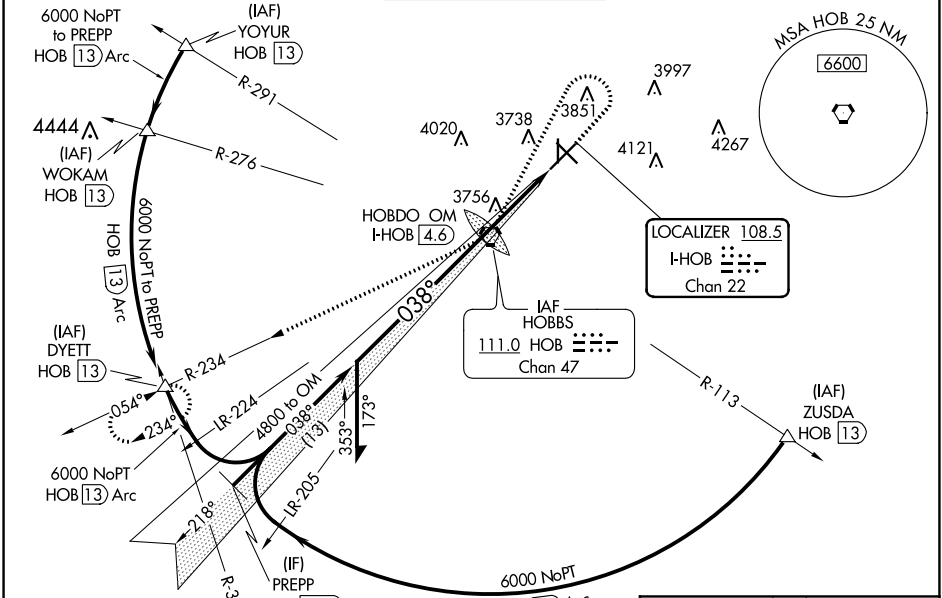
⚠ When local altimeter setting not received, use Carlsbad altimeter setting and increase all DA 281 feet and all MDA 300 feet; increase S-ILS all Cats visibility $\frac{3}{4}$ mile, increase S-LOC Cats C/D visibility $\frac{3}{4}$ mile, increase Circling Cat C visibility $\frac{3}{4}$ mile, increase Circling Cat D visibility $\frac{1}{2}$ mile. For inoperative MALSRS, increase Carlsbad altimeter setting S-ILS all Cats visibility to 1 $\frac{1}{4}$. VDP N/A when using Carlsbad altimeter setting. Rwy 17 helicopter visibility reduction below 1 SM NA. Circling Rwy 17 NA at night.

MALSRS



MISSED APPROACH: Climb to 5000 then climbing left turn to 6000 direct HOB VORTAC then via HOB VORTAC R-234 to DYETT INT/HOB 13 DME and hold.

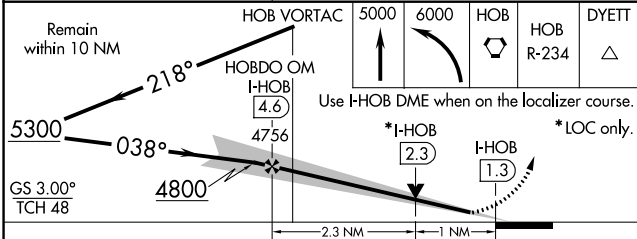
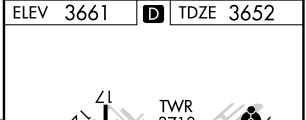
ATIS 119.75	FORT WORTH CENTER 133.1 298.95	HOBBS TOWER * 120.65 (CTAF) 0 317.4	GND CON 121.9	UNICOM 122.95
-----------------------	--	---	-------------------------	-------------------------



SW-1, 25 FEB 2021 to 25 MAR 2021

SW-1, 25 FEB 2021 to 25 MAR 2021

ELEV 3661	D TDZE 3652
-----------	--------------------



CATEGORY	A	B	C	D
S-ILS 3		3852- $\frac{1}{2}$	200 (200- $\frac{1}{2}$)	
S-LOC 3		4020- $\frac{1}{2}$	368 (400- $\frac{1}{2}$)	4020- $\frac{3}{4}$ 368 (400- $\frac{3}{4}$)
C CIRCLING	4120-1 459 (500-1)	4160-1 499 (500-1)	4440-2 $\frac{1}{4}$ 779 (800-2 $\frac{1}{4}$)	4440-2 $\frac{1}{2}$ 779 (800-2 $\frac{1}{2}$)

FAF to MAP 3.3 NM		Knots	60	90	120	150	180
Min:Sec	3:18	2:12	1:39	1:19	1:06		