

WAAS CH <b>82735</b> <b>W21A</b>	APP CRS <b>218°</b>	Rwy Idg TDZE Apt Elev	<b>7398</b> <b>3649</b> <b>3661</b>
--	------------------------	-----------------------------	---

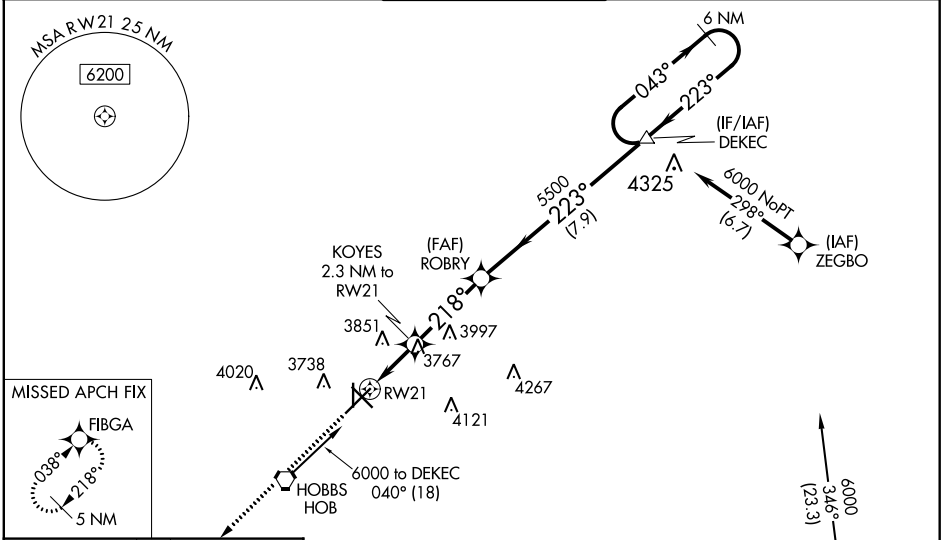
# RNAV (GPS) RWY 21

LEA COUNTY RGNL (HOB)

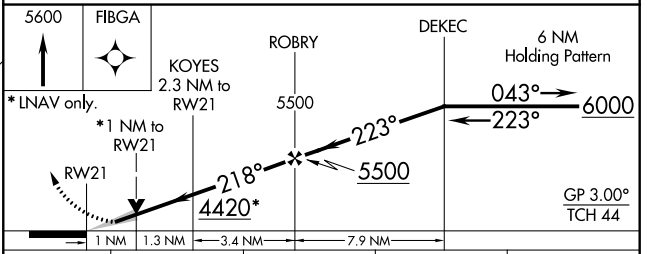
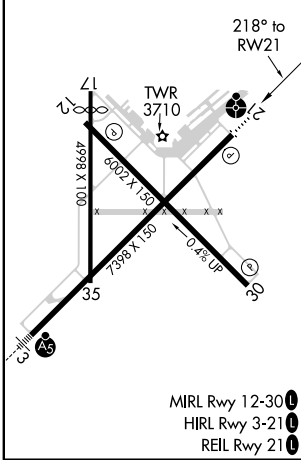
**⚠** For uncompensated Baro-VNAV systems, LNAV/VNAV NA below -22°C (-7°F) or above 53°C (128°F). DME/DME-RNP-0.3 NA. Inoperative table does not apply to LNAV/VNAV all Cats and LNAV Cats C/D. When local altimeter setting not received, use Carlsbad altimeter setting and increase all DA 281 feet and all MDA 300 feet, increase LPV and LNAV/VNAV all Cats visibility 7/8 mile, LNAV Cats C/D and Circling Cat C visibility 3/4 mile, and Circling Cat D visibility 1/2 mile. Baro-VNAV and VDP NA when using Carlsbad altimeter setting. For inoperative ODALS when using Carlsbad altimeter setting, increase LPV and LNAV/VNAV all Cats and LNAV Cats C/D vis to 1 7/8 miles. Rwy 17 helicopter visibility reduction below 1 SM NA. Circling Rwy 17 NA at night.

**ODALS**  
 MISSED APPROACH:  
Climb to 5600 direct  
FIBGA and hold.

ATIS <b>119.75</b>	FORT WORTH CENTER <b>133.1 298.95</b>	<b>HOBBS TOWER *</b> <b>120.65 (CTAF) 317.4</b>	GND CON <b>121.9</b>	UNICOM <b>122.95</b>
-----------------------	--	--	-------------------------	-------------------------



ELEV 3661	<b>D</b>	TDZE 3649
-----------	----------	-----------



CATEGORY	A	B	C	D
LPV DA		3899-3/4	250 (300-3/4)	
LNAV/VNAV DA		3899-3/4	250 (300-3/4)	
LNAV MDA	4020-3/4	371 (400-3/4)	4020-1	371 (400-1)
<b>CIRCLING</b>	4120-1 459 (500-1)	4160-1 499 (500-1)	4440-2 1/4 779 (800-2 1/4)	4440-2 1/2 779 (800-2 1/2)

SW-1, 25 FEB 2021 to 25 MAR 2021

SW-1, 25 FEB 2021 to 25 MAR 2021