

WAAS CH <b>97630</b> <b>W23A</b>	APP CRS <b>234°</b>	Rwy Idg TDZE Apt Elev	<b>3520</b> <b>969</b> <b>977</b>
--	------------------------	-----------------------------	---

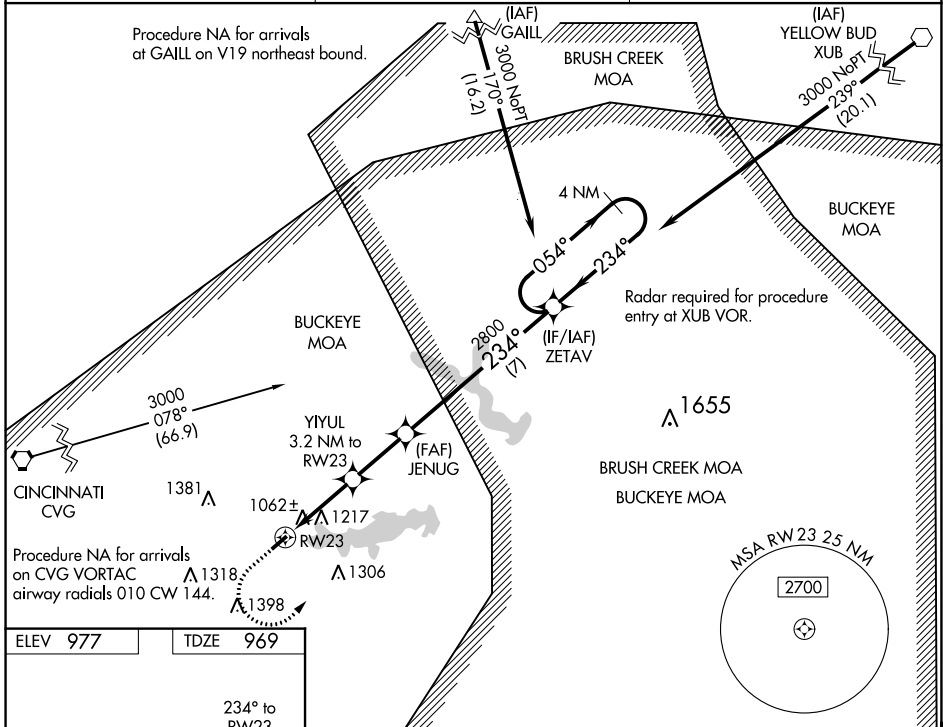
# RNAV (GPS) RWY 23

HIGHLAND COUNTY (HOC)

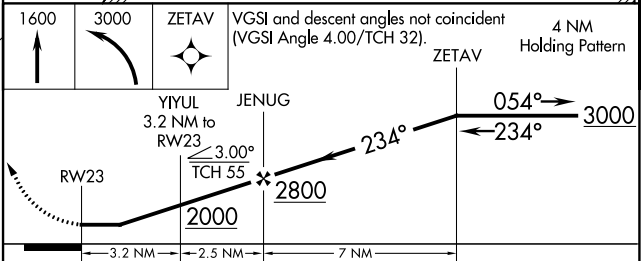
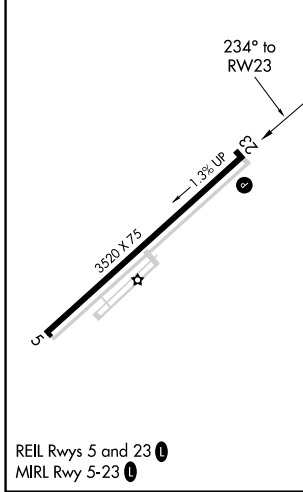
**⚠** DME/DME RNP-0.3 NA. Visibility reduction by helicopters NA. When local altimeter setting not received, use Wilmington Air Park altimeter setting and increase all MDA 60 feet; increase LNAV Cat C,D visibility 1/8 mile, increase LP Cat C,D visibility 1/4 mile, and increase Circling Cat C visibility 1/8 mile. When VGSI inop, Straight-in/Circling Rwy 23 procedure NA at night. Circling to Rwy 05 NA at night.

**⚠ NA** MISSED APPROACH: Climb to 1600 then climbing left turn to 3000 direct ZETAV and hold.

AWOS-3 <b>118.175</b>	INDIANAPOLIS CENTER <b>135.575 290.5</b>	UNICOM <b>123.05 (CTAF)</b>
--------------------------	---	--------------------------------



ELEV 977	TDZE 969
----------	----------



CATEGORY	A	B	C	D
LP MDA	1320-1	351 (400-1)	1320-1 1/8	351 (400-1 1/8)
LNAV MDA	1480-1	511 (600-1)	1480-1 1/8	511 (600-1 1/8)
CIRCLING	1500-1 523 (600-1)	1520-1 543 (600-1)	1520-1 1/8 543 (600-1 1/8)	1540-2 563 (600-2)

HILLSBORO, OHIO  
Orig-A 05MAR15

39°11'N-83°32'W

# HIGHLAND COUNTY (HOC) RNAV (GPS) RWY 23

EC-2, 25 FEB 2021 to 25 MAR 2021

EC-2, 25 FEB 2021 to 25 MAR 2021

REIL Rws 5 and 23  
MIRL Rwy 5-23