

FORT CAMPBELL, KENTUCKY

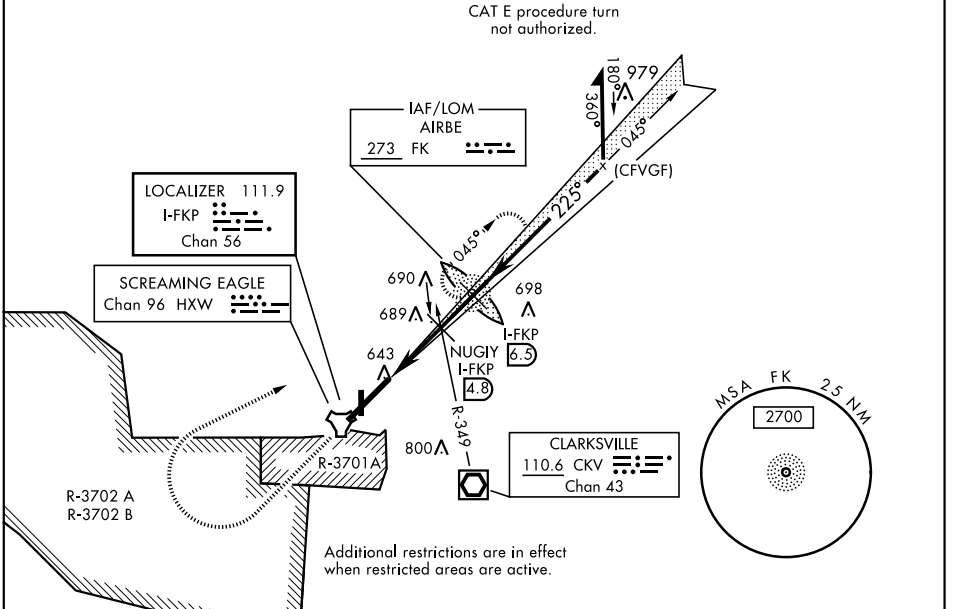
ILS or LOC RWY 23

LOC I-FKP 111.9 Chan 56	APCH CRS 225°	Rwy Idg 10,926 TDZE 571 Arprt Elev 571	AL-679 [USA]	CAMPBELL AAF (KHOP)
---	-------------------------	---	--------------	---------------------

<p>▼ * When ALS inop, increase CAT E RVR to 40. RVR 18 authorized with use of FD or AP or HUD to DA.</p>	<p>SSALR (A3)</p>	<p>MISSED APPROACH: Climb to 1200 then climbing right turn to 2500 direct AIRBE LOM/I-FKP 6.5 DME, continue climb-in-hold to 2500.</p>
--	-----------------------	--

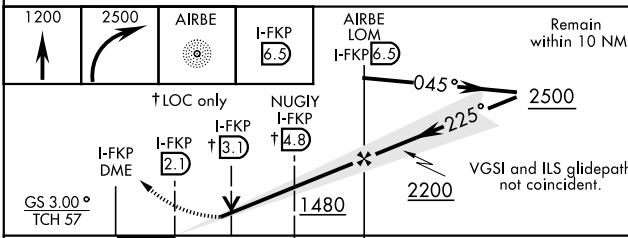
ATIS 125.175 308.4	CAMPBELL APP CON 118.1 269.525	CAMPBELL TOWER 120.9 278.8	GND CON 121.8 266.8	CLNC DEL 138.8	ASR/PAR
------------------------------	--	--------------------------------------	-------------------------------	--------------------------	---------

** When ALS inop, increase CAT CDE RVR to 55.
*** Circling not authorized SE of Rwy 5-23.



RADAR REQUIRED

(for procedure entry)



ELEV 571	TDZE 571
HIRL all Rwy	
FAF to MAP 4.4 NM	
Knots	60 90 120 150 180
Min:Sec	4:24 2:56 2:12 1:46 1:28

CATEGORY	A	B	C	D	E
S-ILS 23 *	771/24		200	(200-½)	
S-LOC 23**	940/24	369 (400-½)	940/40	369 (400-¾)	
*** CIRCLING	1060-1 489 (500-1)		1060-1½ 489 (500-1½)	1140-2 569 (600-2)	

FORT CAMPBELL, KENTUCKY 36° 40' N - 87° 30' W CAMPBELL AAF (KHOP)

Amtd 13 05DEC19

ILS or LOC RWY 23

SE-1, 25 FEB 2021 to 25 MAR 2021

SE-1, 25 FEB 2021 to 25 MAR 2021