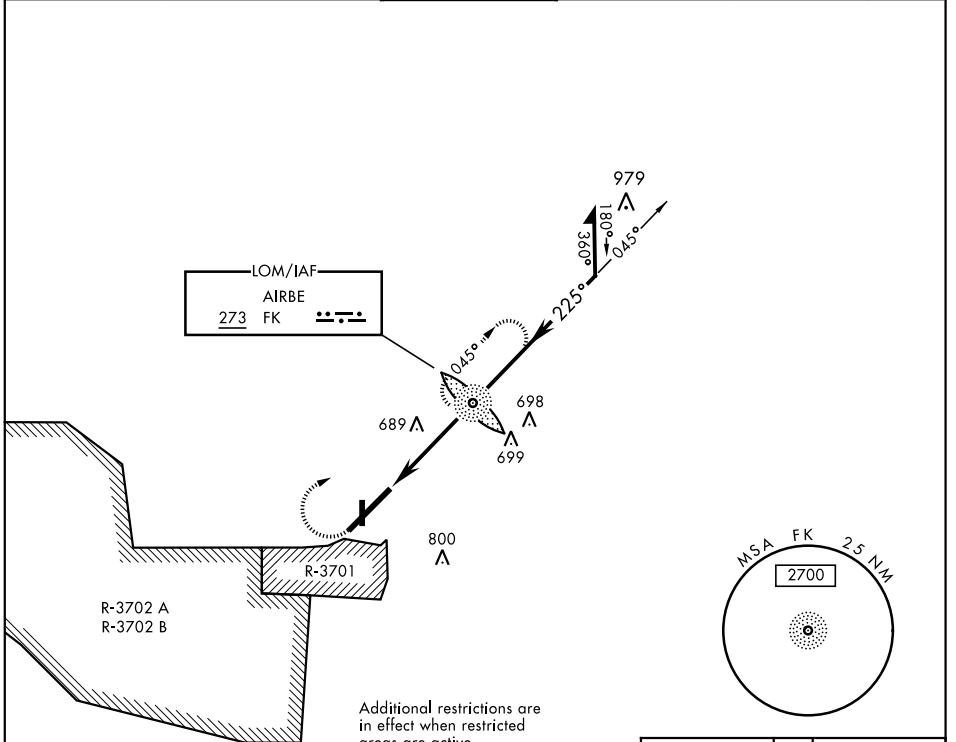


NDB RWY 23

NDB FK 273	APCH CRS 225°	Rwy ldg 10,926 TDZE 571 Arprt Elev 571	AL-679 [USA]	CAMPBELL AAF (KHOP)	
▼ *When ALS inop, increase CAT AB RVR to 50. **Circling not authorized SE of Rwy 5-23.			SSALR 	MISSED APPROACH: Climb to 1200, then climbing right turn to 2500 direct to FK LOM and hold.	
ATIS 125.175 308.4	CAMPBELL APP CON 118.1 269.525	CAMPBELL TOWER 120.9 278.8	GND CON 121.8 266.8	CLNC DEL 138.8	ASR/PAR

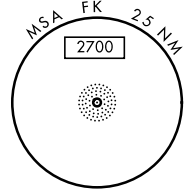
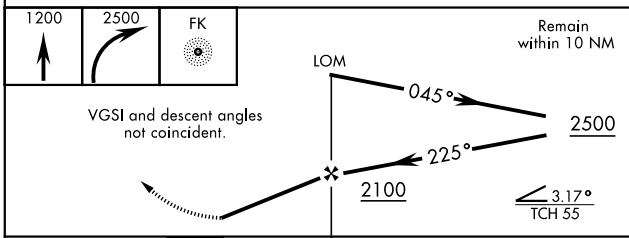


SE-1, 25 FEB 2021 to 25 MAR 2021

SE-1, 25 FEB 2021 to 25 MAR 2021

RADAR REQUIRED

(for procedure entry)



CATEGORY	A	B	C	D
S-23*	1120/40 549 (600-34)		1120/60 549 (600-1)	
CIRCLING **	1120-1 549 (600-1)		1120-1½ 549 (600-1½)	1140-2 569 (600-2)

ELEV 571	TDZE 571
----------	----------

225° 4.4 NM from NDB

81
640 Δ
607 Δ
661 Δ
630 Δ
36 Δ

4500 x 100
2445 x 20
10,926 x 150

HIRL all Rwy

FAF to MAP 4.4 NM					
Knots	60	90	120	150	180
Min:Sec	4:24	2:56	2:12	1:46	1:28

NDB RWY 23