

FORT CAMPBELL, KENTUCKY

RNAV (GPS) RWY 23

WAAS Chan 56203 W23A	APCH CRS 225°	Rwy Idg 10,926 TDZE 571 Arprt Elev 571
--	-------------------------	---

AL-679 [USA]

CAMPBELL AAF (KHOP)

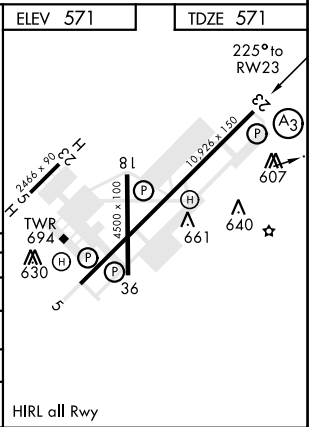
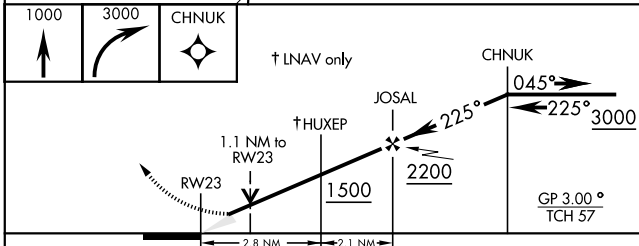
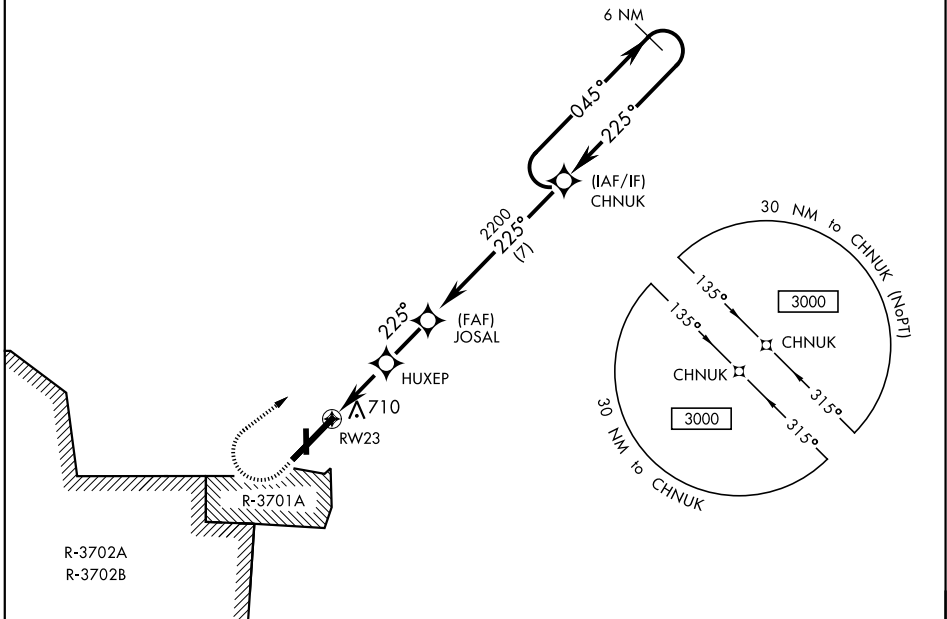
<p>▼ * When ALS inop, increase CAT E RVR to 40. ** When ALS inop, increase CAT E RVR to 50. *** When ALS inop, increase CAT E RVR to 60.</p>	<p>SSALR (A3)</p>	<p>MISSED APPROACH: Climb to 1000 then climbing right turn to 3000 direct CHNUK and hold.</p>
--	------------------------------	---

<p>ATIS 125.175 308.4</p>	<p>CAMPBELL APP CON 118.1 269.525</p>	<p>CAMPBELL TOWER 120.9 278.8</p>	<p>GND CON 121.8 266.8</p>	<p>CLNC DEL 138.8</p>	<p>ASR/PAR</p>
--------------------------------------	--	--	---------------------------------------	----------------------------------	----------------

**** Circling NA SE of Rwy 5-23.

DME/DME RNP-0.3 NA.

For uncompensated BARO-VNAV systems, LNAV/VNAV NA below -19°C (-2°F) or above 54°C (130°F).



CATEGORY	A	B	C	D	E
LPV DA *	771/24		200	(200-½)	
LNAV/DA **	891/24		320	(400-½)	
LNAV MDA ***	960/24	389 (400-½)	960/35		389 (400-¾)
**** CIRCLING	1060-1	489 (500-1)	1060-1½ 489 (500-1½)	1140-2	569 (600-2)

FORT CAMPBELL, KENTUCKY 36° 40' N - 87° 30' W CAMPBELL AAF (KHOP)

Amdt 1A 24MAY18

RNAV (GPS) RWY 23

SE-1, 25 FEB 2021 to 25 MAR 2021

SE-1, 25 FEB 2021 to 25 MAR 2021