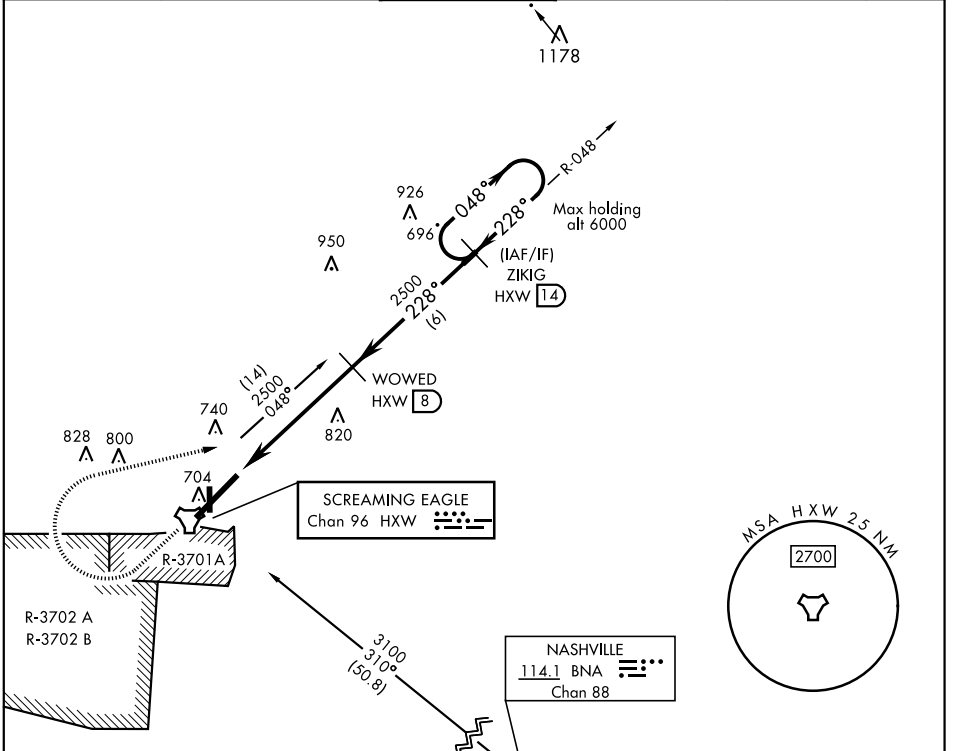


FORT CAMPBELL, KENTUCKY

TACAN RWY 23

TACAN HXW Chan 96	APCH CRS 228°	Rwy ldg TDZE Arprt Elev 10,926 571 571	AL-679 [USA]	CAMPBELL AAF (KHOP)
* When ALS inop, increase CAT CDE vis to 1 3/8. ** Circling NA SE of Rwy 5-23.			SSALR A3	MISSED APPROACH: Climb to 1200 then climbing right turn to 2500 on hdg 078° and HXW TACAN R-048 to ZIKIG/HXW 14 DME and hold.

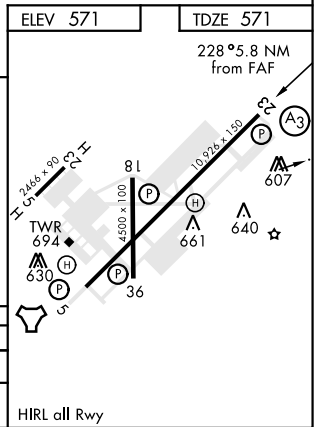
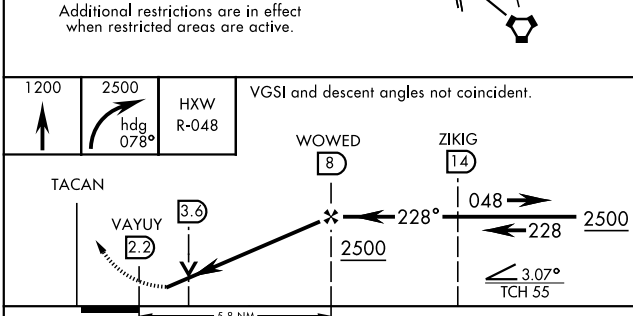
ATIS 125.175 308.4	CAMPBELL APP CON 118.1 269.525	CAMPBELL TOWER 120.9 278.8	GND CON 121.8 266.8	CLNC DEL 138.8	ASR/PAR
------------------------------	--	--------------------------------------	-------------------------------	--------------------------	---------



SE-1, 25 FEB 2021 to 25 MAR 2021

SE-1, 25 FEB 2021 to 25 MAR 2021

Additional restrictions are in effect when restricted areas are active.



CATEGORY	A	B	C	D	E
S-23 *	1080/24	509 (600-3/4)	1080/55	509 (600-1/4)	
CIRCLING **	1080-1	509 (600-1)	1080-1 1/2 509 (600-1/2)	1140-2	569 (600-2)

HIRL all Rwy

FORT CAMPBELL, KENTUCKY 36° 40' N - 87° 30' W CAMPBELL AAF (KHOP)

Orig B 05DEC19

TACAN RWY 23