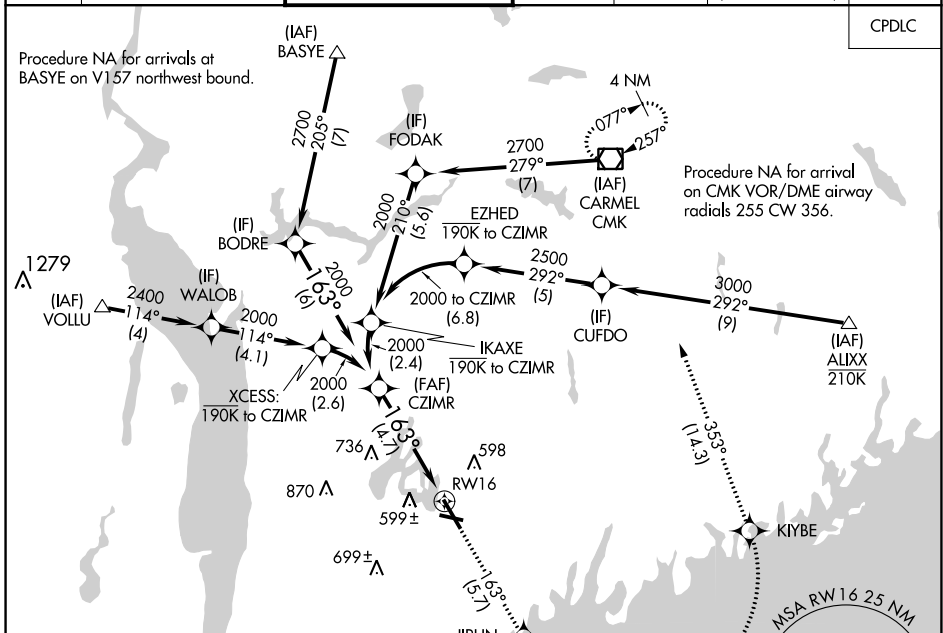


APP CRS	Rwy Idg	6549
163°	TDZE	439
	Apt Elev	439

RNAV (RNP) Z RWY 16

WESTCHESTER COUNTY (HPN)

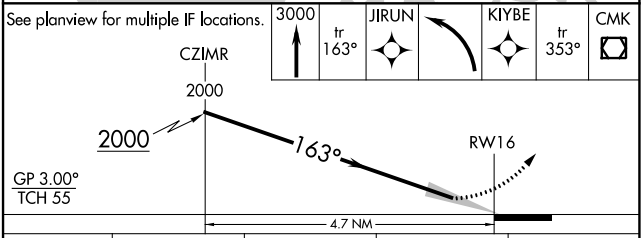
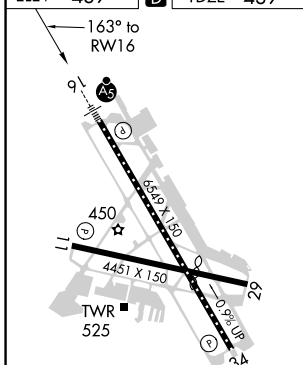
<p>▽ For uncompensated Baro-VNAV systems, procedure NA below -14C (7°F) or above 54°C (130°F). RF required. GPS required.</p>		<p>MALSR</p>	<p>MISSED APPROACH: Climb to 3000 on track 163° to JIRUN, left turn to KIYBE, then track 353° to CMK VOR/DME and hold.</p>			
D-ATIS	NEW YORK APP CON	WESTCHESTER TOWER ★	GND CON	CLNC DEL	CLNC DEL	UNICOM
133.8	120.8 126.4 257.65	118.575 (CTAF) 0 284.65	121.825	127.25	126.4 (when twr closed)	122.95



NE-2, 25 FEB 2021 to 25 MAR 2021

NE-2, 25 FEB 2021 to 25 MAR 2021

ELEV	439	D	TDZE	439
------	------------	----------	------	------------



CATEGORY	A	B	C	D
RNP 0.15 DA		810/40	371 (400-¾)	
RNP 0.30 DA		950-1¼	511 (600-1¼)	

AUTHORIZATION REQUIRED