

SWVAY FOUR ARRIVAL (RNAV)

DALLAS, TEXAS

SC-2, 25 FEB 2021 to 25 MAR 2021

REGIONAL APP CON
 135.975, 379.9
 ADS ATIS
 133.4
 DAL ATIS
 120.15
 RBD ATIS
 126.35

NOTE: RADAR required.

NOTE: RNAV 1.

NOTE: DME/DME/IRU or GPS required.

NOTE: DAL ARRIVALS: Props only. Turbojet aircraft file and expect the BACHR or DRYEE RNAV STARS.

NOTE: Props exempt from speed restriction at KNEAD.

NOTE: When DFW is in south flow, turbojets expect to cross KNEAD at 10000.

NOTE: When DFW is in north flow, turbojets expect to cross KNEAD at 12000.

MCKINNEY NATIONAL

ADDISON

RALPH M. HALL / ROCKWALL MUNI

DALLAS LOVE FIELD

GRAND PRAIRIE

DALLAS EXECUTIVE

ARLINGTON MUNI

FORT WORTH SPINKS

CLEBURNE RGNL

KNEAD 250K

DRYEE 3000

SCOPS 3000

2400

2300

2100

2050

2000

1950

1900

1850

1800

1750

1700

1650

1600

1550

1500

1450

1400

1350

1300

1250

1200

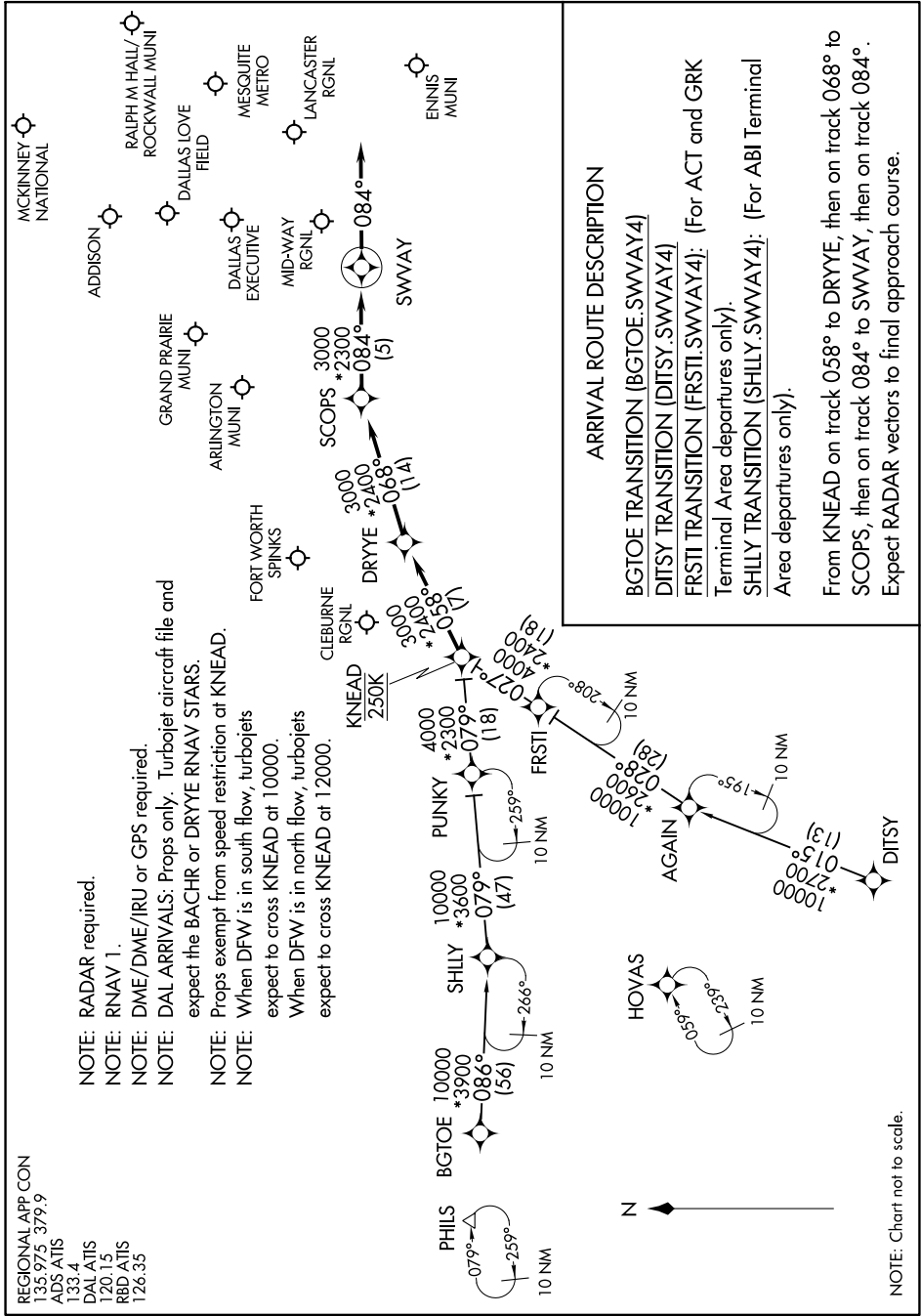
1150

1100

SWVAY FOUR ARRIVAL (RNAV)

(KNEAD.SWVAY4) 16JUL20

DALLAS, TEXAS



ARRIVAL ROUTE DESCRIPTION

BGTOE TRANSITION (BGTOE.SWVAY4)

DITSY TRANSITION (DITSY.SWVAY4)

FRSTI TRANSITION (FRSTI.SWVAY4): (For ACT and GRK Terminal Area departures only).

SHILLY TRANSITION (SHILLY.SWVAY4): (For ABI Terminal Area departures only).

From KNEAD on track 058° to DRYEE, then on track 068° to SCOPS, then on track 084° to SWVAY, then on track 084°.

Expect RADAR vectors to final approach course.

SC-2, 25 FEB 2021 to 25 MAR 2021

NOTE: Chart not to scale.