

LOC/DME I-HQZ 109.75 Chan 34 (Y)	APP CRS 358°	Rwy Idg 6000 TDZE 443 Apt Elev 447
---	------------------------	---

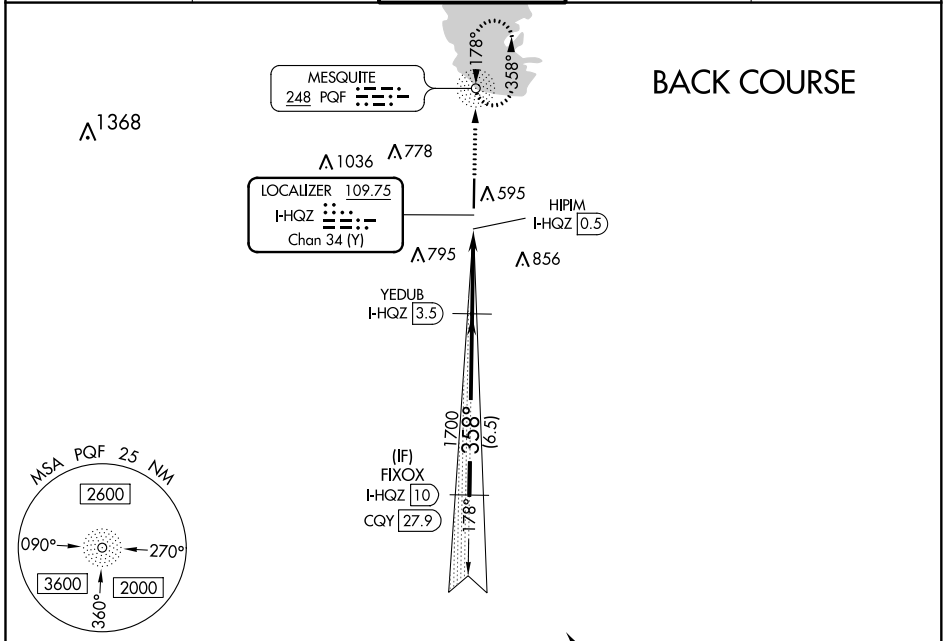
LOC/DME BC RWY 36

MESQUITE METRO (H/QZ)

⚠ ADF required. When local altimeter setting not received, use Dallas-Love Field altimeter setting and increase all MDA 60 feet; increase S-36 Cat C visibility to 1½ mile and Circling Cat C visibility to 2¼ mile.

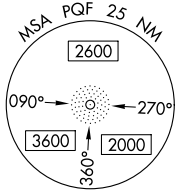
MISSED APPROACH: Climb to 2000 direct PQF NDB and hold.

AWOS-3 118.175	REGIONAL APP CON 125.2 343.65	MESQUITE TOWER★ 120.3 (CTAF) 0	GND CON 118.85	UNICOM 123.05
--------------------------	---	--	--------------------------	-------------------------

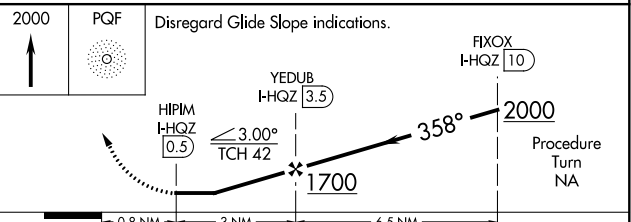
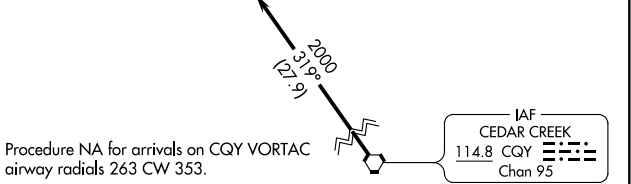
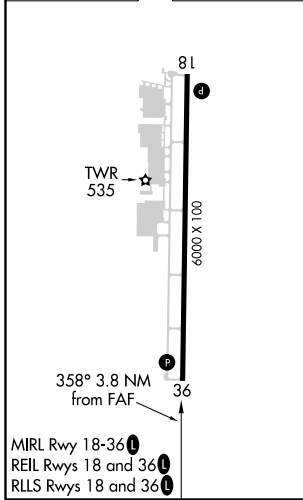


SC-2, 25 FEB 2021 to 25 MAR 2021

SC-2, 25 FEB 2021 to 25 MAR 2021



ELEV 447	TDZE 443
-----------------	-----------------



CATEGORY	A	B	C	D
S-36	880-1	437 (500-1)	880-1¼ 437 (500-1¼)	NA
C CIRCLING	960-1	513 (600-1)	1160-2 713 (800-2)	NA