

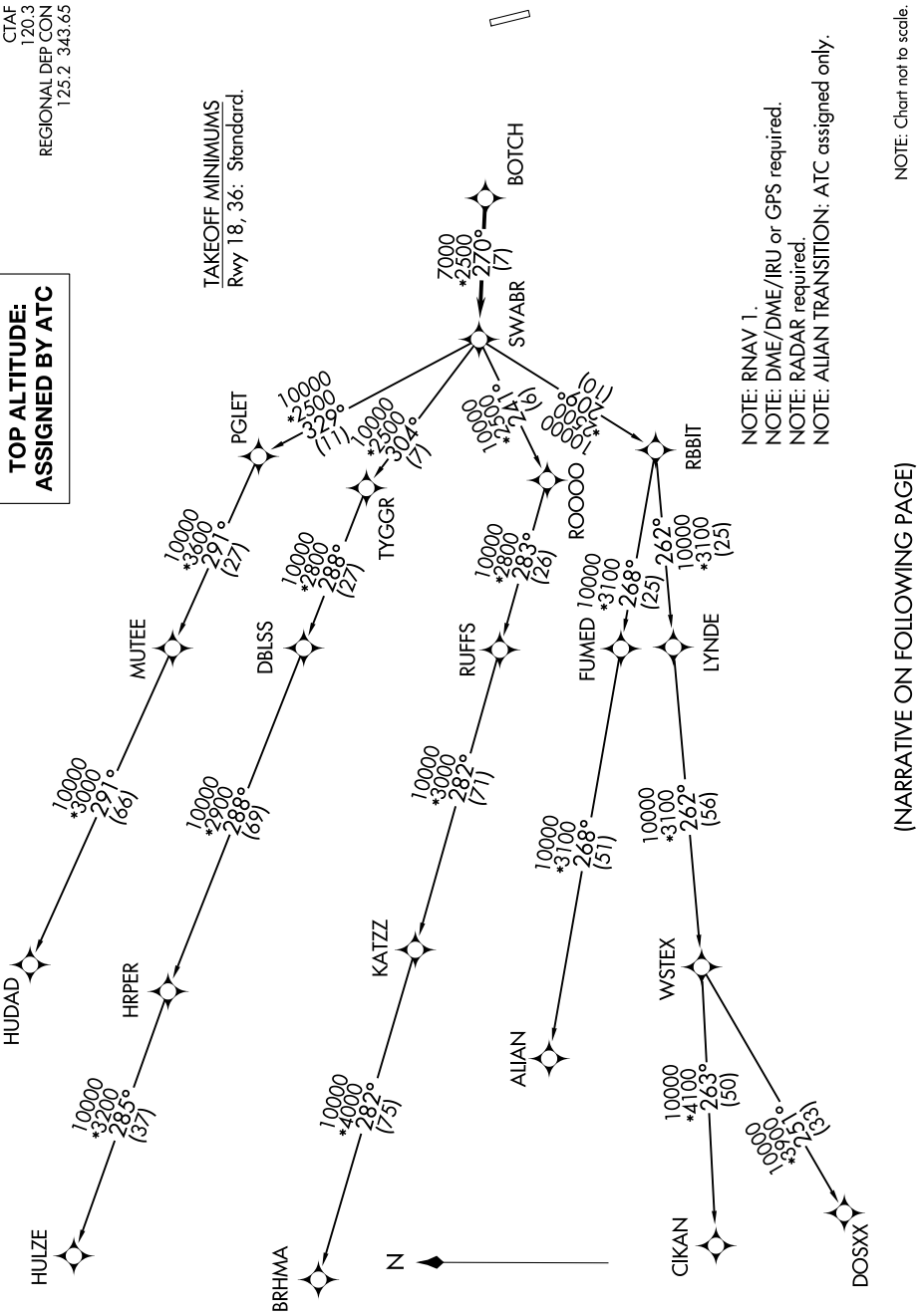
# SWABR SEVEN DEPARTURE (RNAV)

SC-2, 25 FEB 2021 to 25 MAR 2021

**TOP ALTITUDE:  
ASSIGNED BY ATC**

CTAF  
120.3  
REGIONAL DEP CON  
125.2 343.65

TAKEOFF MINIMUMS  
Rwy 18, 36: Standard.



NOTE: RNAV 1.  
 NOTE: DME/DME/IRU or GPS required.  
 NOTE: RADAR required.  
 NOTE: ALIEN TRANSITION: ATC assigned only.

NOTE: Chart not to scale.

(NARRATIVE ON FOLLOWING PAGE)

SC-2, 25 FEB 2021 to 25 MAR 2021