

LOC/DME I-HRJ 108.35 Chan 20(Y)	APP CRS 048°	Rwy Idg TDZE 195 Apt Elev 202	5000
--	------------------------	---	-------------

LOC RWY 5

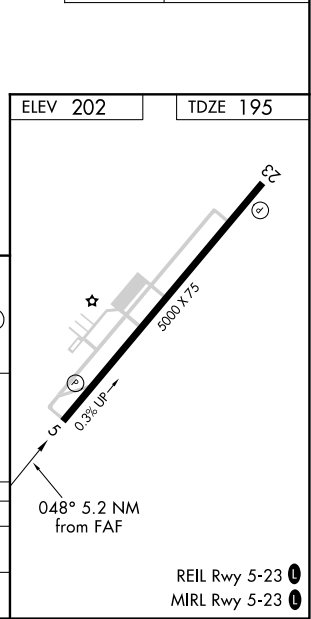
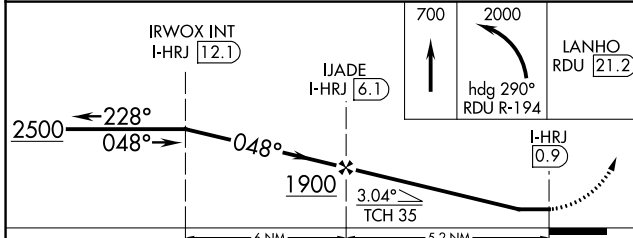
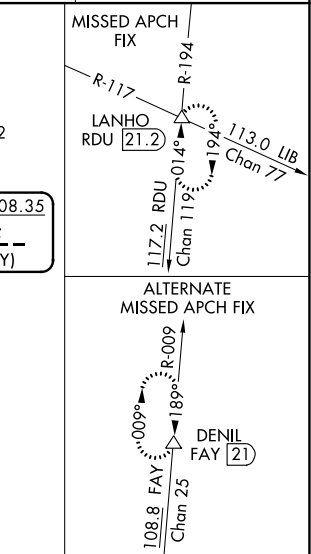
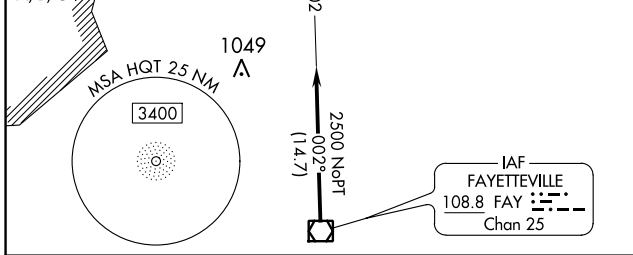
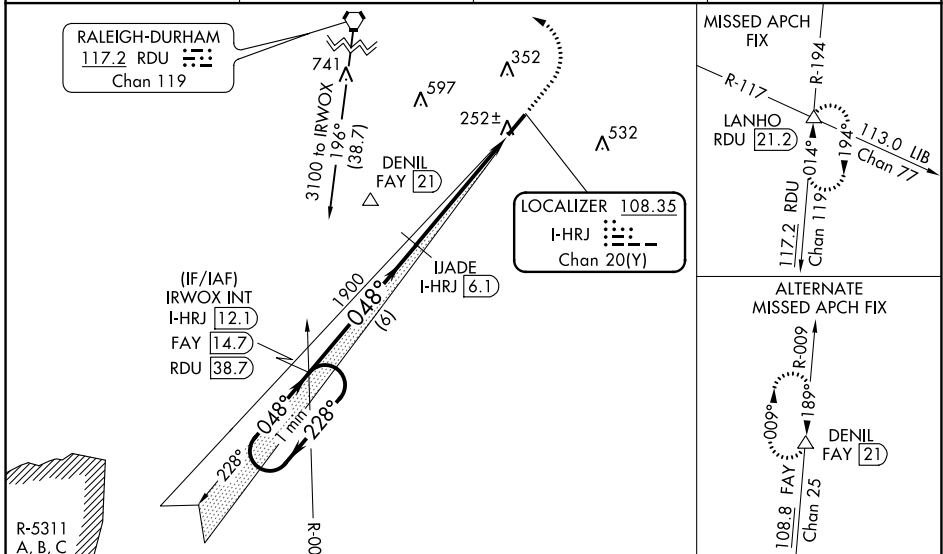
HARNETT RGNL JETPORT (HRJ)

DME required.

Rwy 5 helicopter visibility reduction below 1 SM NA. When local altimeter setting not received, use Smithfield altimeter setting and increase all MDA 60 feet.

MISSED APPROACH: Climb to 700 then climbing left turn to 2000 on heading 290° and RDU R-194 to LANHO INT/RDU 21.2 DME and hold.

AWOS-3 119.025	FAYETTEVILLE APP CON 125.175 285.575	GCO 135.075	UNICOM 122.7 (CTAF) 0
--------------------------	--	-----------------------	---------------------------------



CATEGORY	A	B	C	D
S-5		520-1 325 (400-1)		NA
CIRCLING	600-1 398 (400-1)	660-1 458 (500-1)	720-1½ 518 (600-1½)	NA

SE-2, 25 FEB 2021 to 25 MAR 2021

SE-2, 25 FEB 2021 to 25 MAR 2021