

NDB HQT	APP CRS	Rwy Idg	5000
417	230°	TDZE	202
		Apt Elev	202

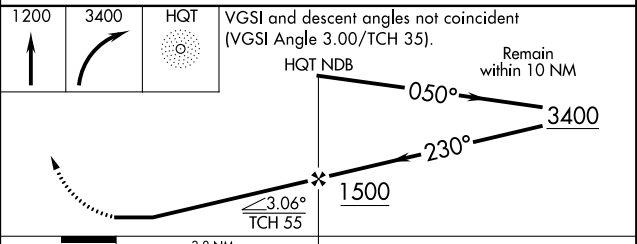
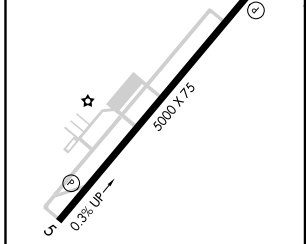
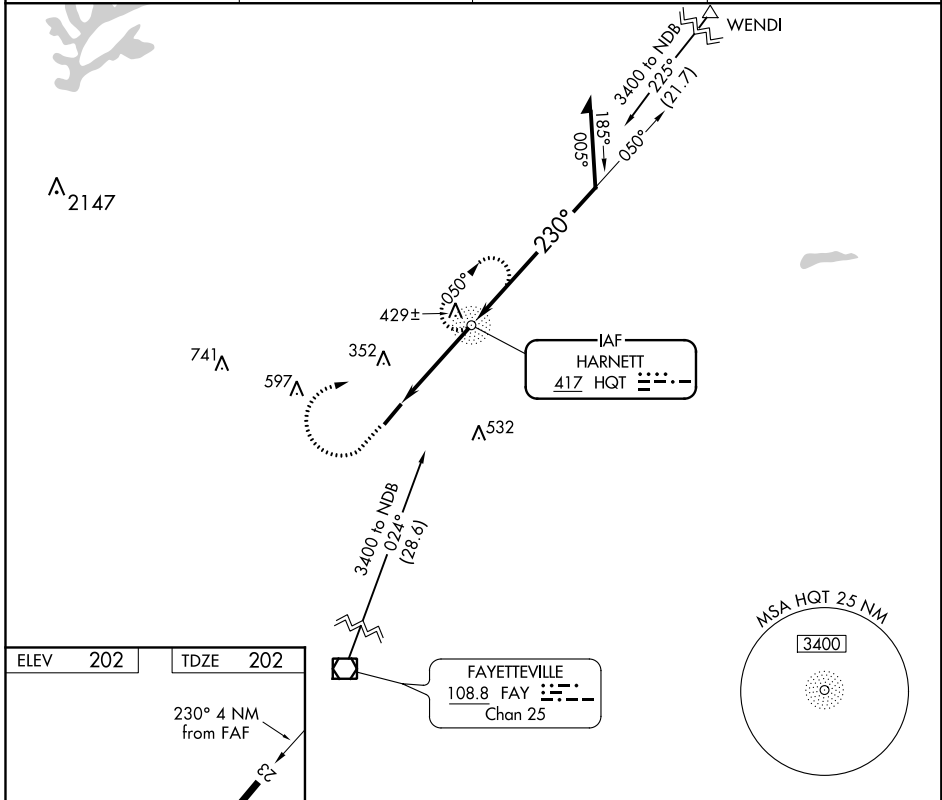
# NDB RWY 23

HARNETT RGNL JETPORT (HRJ)

**⚠️ NA** When local altimeter setting not received, use Smithfield altimeter setting and increase all MDA 60 feet, and S-23 and Circling Cat C visibility 1/8 mile. Helicopter visibility reduction below 3/4 SM NA.

MISSED APPROACH: Climb to 1200 then climbing right turn to 3400 direct HQT NDB and hold.

AWOS-3 <b>119.025</b>	FAYETTEVILLE APP CON <b>125.175 285.575</b>	GCO <b>135.075</b>	UNICOM <b>122.7 (CTAF)</b>
--------------------------	--	-----------------------	-------------------------------



REIL Rwy 5-23					
MIRL Rwy 5-23					
FAF to MAP 3.8 NM					
Knots	60	90	120	150	180
Min:Sec	3:48	2:32	1:54	1:31	1:16
CATEGORY	A	B	C	D	
S-23	780-1	578 (600-1)	780-1½ 578 (600-1½)	NA	
CIRCLING	780-1	578 (600-1)	780-1½ 578 (600-1½)	NA	

SE-2, 25 FEB 2021 to 25 MAR 2021

SE-2, 25 FEB 2021 to 25 MAR 2021