

WAAS CH 72830 W35A	APP CRS 356°	Rwy Idg TDZE Apt Elev	5759 36 36
--	------------------------	-----------------------------	---------------------------------------

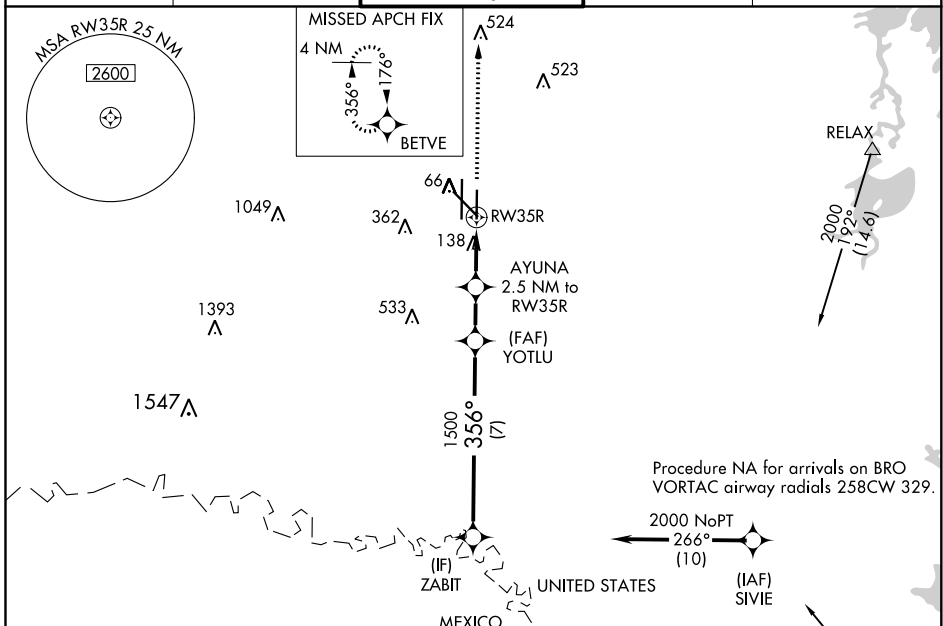
RNAV (GPS) RWY 35R

VALLEY INTL (HRL)

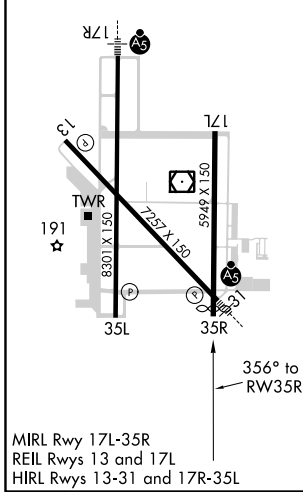
⚠ For uncompensated Baro-VNAV systems, LNAV/VNAV NA below -15°C (5°F) or above 54°C (130°F). DME/DME RNP-0.3 NA. Visibility reduction by helicopters NA. When local altimeter setting not received, use Port Isabel altimeter setting: increase all DAs to 328 feet and all visibilities ½ SM; increase all MDAs 60 feet and visibility Cats C and D ¼ SM. Baro-VNAV and VDP NA with Port Isabel altimeter setting.

MISSED APPROACH:
Climb to 2000 direct BETVE and hold.

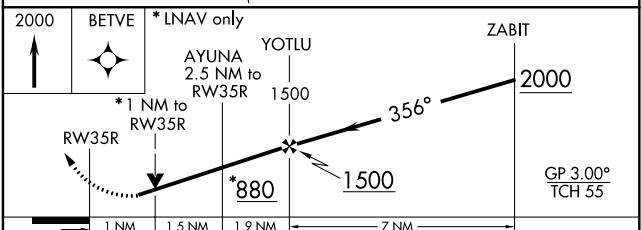
ATIS 124.85	VALLEY APP CON 120.7 279.5	HARLINGEN TOWER * 119.3 (CTAF) 317.6	GND CON 121.7	UNICOM 122.95
-----------------------	--------------------------------------	---	-------------------------	-------------------------



ELEV 36	D	TDZE 36
---------	----------	---------



MIRL Rwy 17L-35R
REIL Rwys 13 and 17L
HIRL Rwys 13-31 and 17R-35L



CATEGORY	A	B	C	D
LPV DA		286-¾	250 (300-¾)	
LNAV/VNAV DA		286-¾	250 (300-¾)	
LNAV MDA		400-1	364 (400-1)	
C CIRCLING	500-1 464 (500-1)	560-1 524 (600-1)	680-1¾ 644 (700-1¾)	680-2 644 (700-2)

SC-3, 25 FEB 2021 to 25 MAR 2021

SC-3, 25 FEB 2021 to 25 MAR 2021