

APP CRS	Rwy Idg	<b>8301</b>
<b>176°</b>	TDZE	<b>35</b>
	Apt Elev	<b>36</b>

# RNAV (RNP) Z RWY 17R

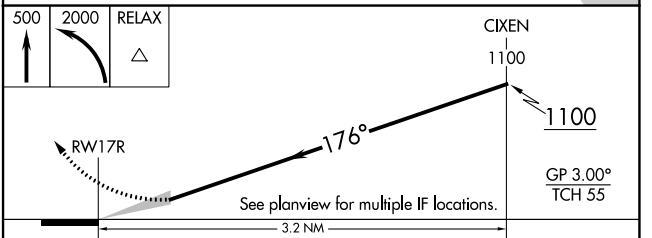
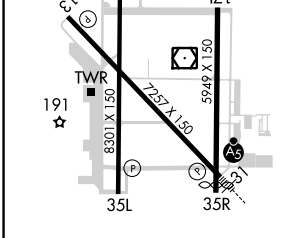
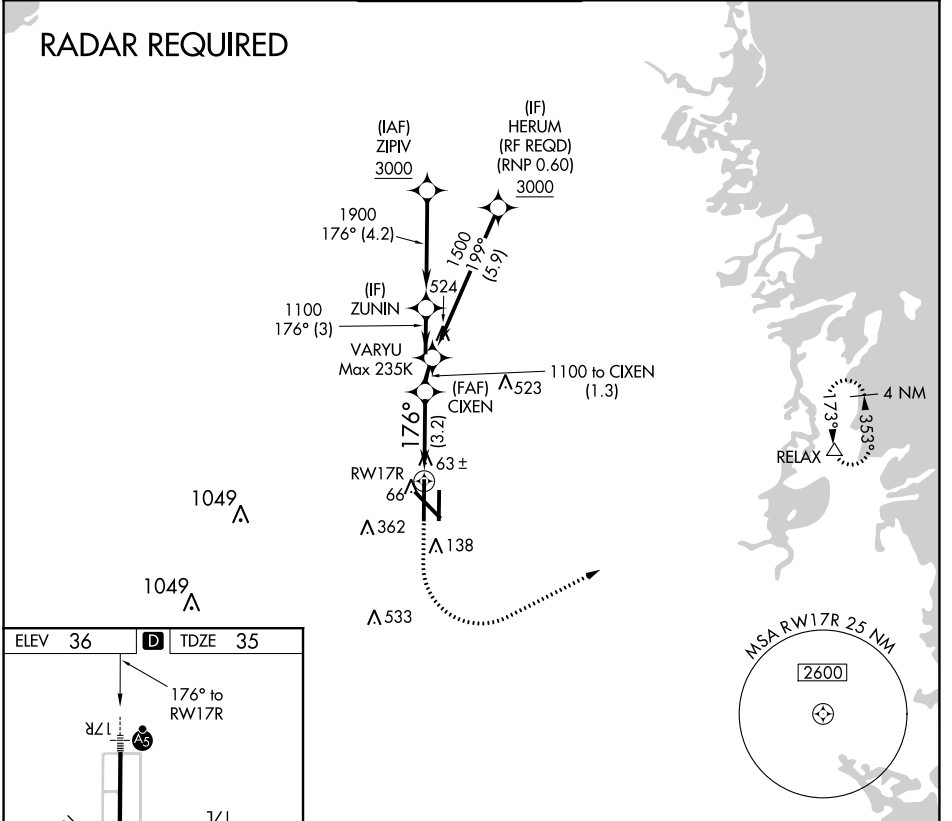
VALLEY INTL (HRL)

**▽** For uncompensated Baro-VNAV systems, procedure NA below 2°C (36°F) or above 54°C (130°F). For inoperative MALSR, increase RNP 0.3 all Cats visibility to RVR 4500. GPS Required.



**MISSED APPROACH:** Climb to 500 then climbing left turn to 2000 direct RELAX and hold.

ATIS <b>124.85</b>	VALLEY APP CON <b>120.7 279.5</b>	HARLINGEN TOWER★ <b>119.3(CTAF) 0 317.6</b>	GND CON <b>121.7</b>	UNICOM <b>122.95</b>
-----------------------	--------------------------------------	--	-------------------------	-------------------------



MIRL Rwy 17L-35R  
REIL Rwy 13 and 17L  
HIRL Rwy 13-31 and 17R-35L

CATEGORY	A	B	C	D
RNP 0.30 DA		305/40	270 (300-3/4)	

## AUTHORIZATION REQUIRED

SC-3, 25 FEB 2021 to 25 MAR 2021

SC-3, 25 FEB 2021 to 25 MAR 2021