


APP CRS	Rwy Idg	7257
311°	TDZE	36
	Apt Elev	36

RNAV (RNP) Z RWY 31

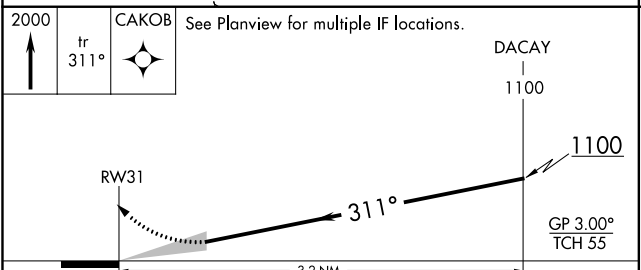
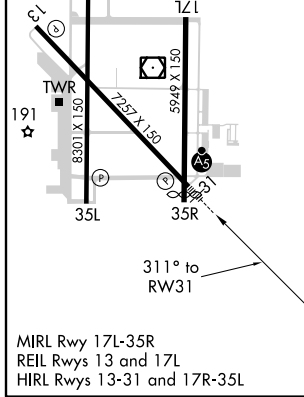
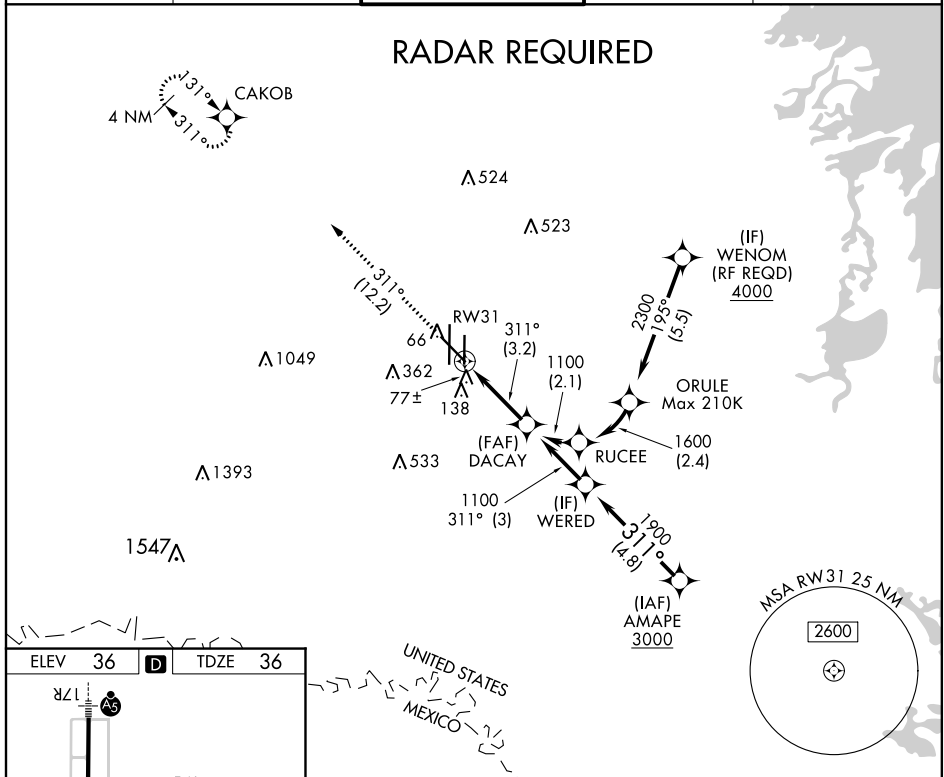
VALLEY INTL (HRL)

▼ For uncompensated Baro-VNAV systems, procedure NA below 2°C (36°F) or above 54°C (130°F). GPS Required. For inop ALS, increase RNP 0.17 all Cats visibility to ½ SM, and RNP 0.30 all Cats visibility 1 SM.

MALS 

MISSED APPROACH: Climb to 2000 on track 311° to CAKOB and hold.

ATIS 124.85	VALLEY APP CON 120.7 279.5	HARLINGEN TOWER ★ 119.3 (CTAF) 317.6	GND CON 121.7	UNICOM 122.95
-----------------------	--------------------------------------	--	-------------------------	-------------------------



CATEGORY	A	B	C	D
RNP 0.17 DA		310-½ 274 (300-½)		
RNP 0.30 DA		360-⅝ 324 (400-⅝)		

AUTHORIZATION REQUIRED

SC-3, 25 FEB 2021 to 25 MAR 2021

SC-3, 25 FEB 2021 to 25 MAR 2021