

WAAS CH 63119 W06A	APP CRS 063°	Rwy Idg TDZE Apt Elev	5013 394 398
--	------------------------	-----------------------------	---

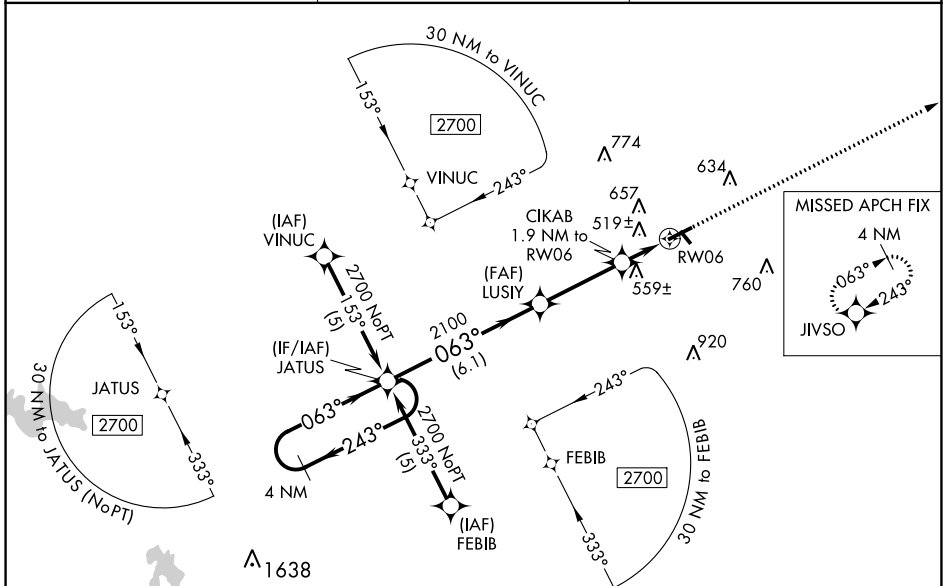
RNAV (GPS) RWY 6

HARRISBURG-RALEIGH (HSB)

⚠ Baro-VNAV NA when using Williamson County Rgnl altimeter setting. For uncompensated Baro-VNAV systems, LNAV/VNAV NA below -15°C (5°F) or above 48°C (118°F). DME/DME RNP-0.3 NA. Visibility reduction by helicopters NA. When local altimeter setting not received, use Williamson County Rgnl altimeter setting and increase all DA 62 feet and all MDA 80 feet; increase LPV all Cats, LNAV/VNAV all Cats, LNAV Cats C and D and Circling Cats C and D visibility ¼ mile. VDP NA with Williamson County Rgnl altimeter setting.

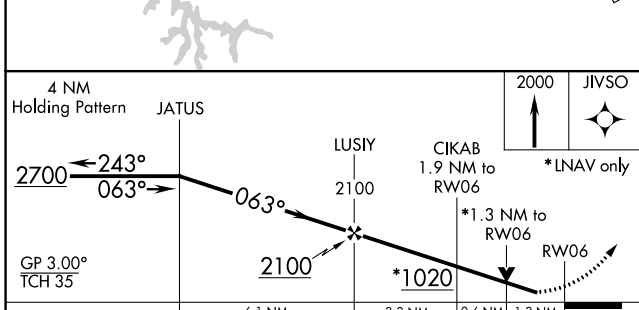
MISSED APPROACH:
Climb to 2000 direct JIVSO and hold.

AWOS-3 135.925	KANSAS CITY CENTER 127.475 346.275	UNICOM 122.8 (CTAF) 0
--------------------------	--	---------------------------------



EC-3, 25 FEB 2021 to 25 MAR 2021

EC-3, 25 FEB 2021 to 25 MAR 2021



ELEV 398	TDZE 394
----------	----------

CATEGORY	A	B	C	D
LPV DA		682-1	288 (300-1)	
LNAV/VNAV DA		958-2	564 (600-2)	
LNAV MDA	820-1	426 (500-1)	820-1¼	426 (500-1¼)
CIRCLING	880-1 482 (500-1)	1020-1 622 (700-1)	1020-1¾ 622 (700-1¾)	1020-2 622 (700-2)

