

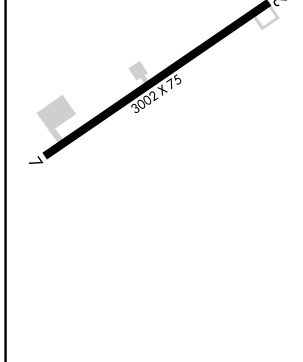
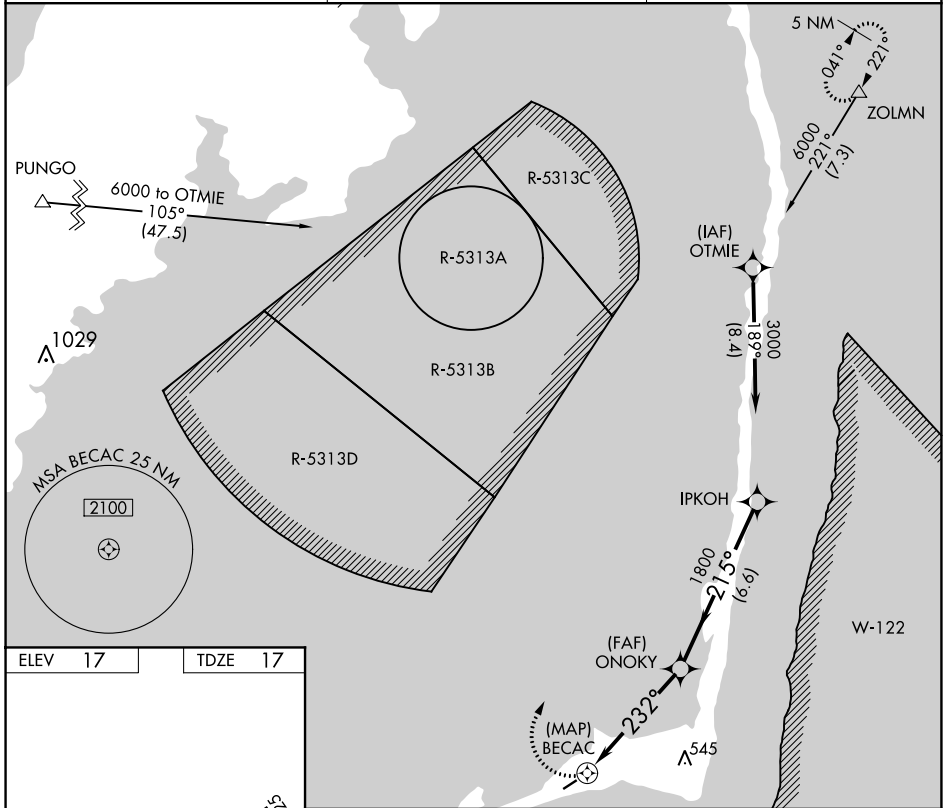
APP CRS <b>232°</b>	Rwy Idg TDZE Apt Elev	<b>3002</b> <b>17</b> <b>17</b>
------------------------	-----------------------------	---------------------------------------

# RNAV (GPS) RWY 25

BILLY MITCHELL (HSE)

NA Procedure NA at night. GPS or RNP-0.3 required. DME/DME RNP-0.3 NA.	MISSED APPROACH: Climbing right turn to 6000 via course 032° to ZOLMN WP and hold.
---	---

ASOS <b>118.375</b>	CHERRY POINT APP CON <b>119.75 360.775</b>	CTAF <b>122.9</b>
------------------------	---	----------------------



	6000	ZOLMN △		IPKOH
	crs 032°		ONOKY	3000
		BECAC	232°	215°
			3.00°	1800
			TCH 40	Procedure Turn NA
	0.5	5 NM	6.6 NM	
CATEGORY	A	B	C	D
LNAV MDA	520-1	503 (600-1)	520-1½ 503 (600-1½)	NA
CIRCLING	560-1	543 (600-1)	560-1½ 543 (600-1½)	NA

SE-2, 25 FEB 2021 to 25 MAR 2021

SE-2, 25 FEB 2021 to 25 MAR 2021