

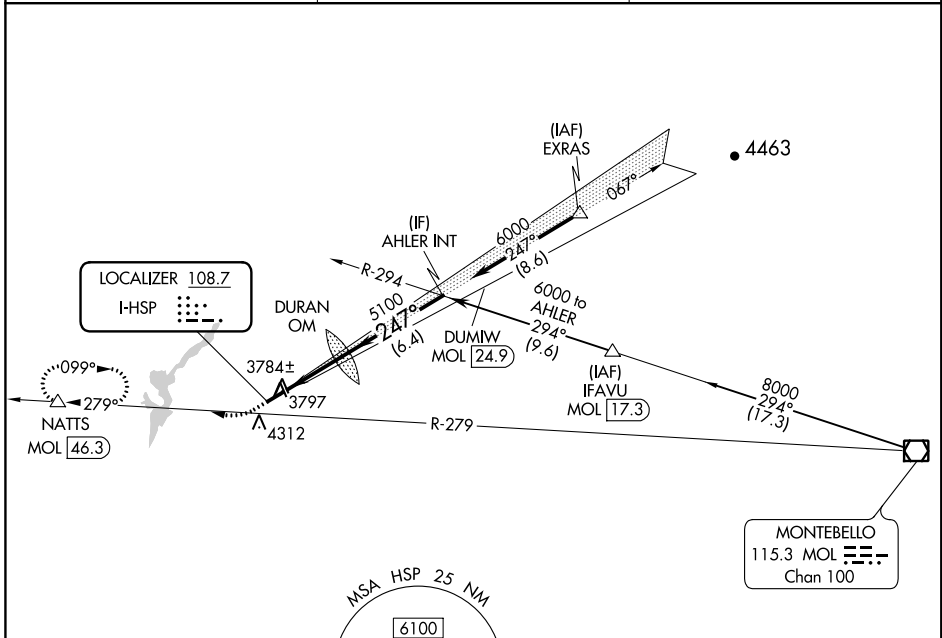
LOC I-HSP <b>108.7</b>	APP CRS <b>247°</b>	Rwy Idg <b>5600</b> TDZE <b>3773</b> Apt Elev <b>3793</b>
---------------------------	------------------------	---

# ILS or LOC RWY 25

INGALLS FIELD (HSP)

DME required.	MISSED APPROACH: Climb to 4360, then climbing right turn to 6200 on heading 270° and MOL R-279 to NATTS/MOL 46.3 DME and hold. (DME required).
<p>▼ Circling to Rwy 7 NA at night.</p> <p>▲ NA Circling NA southeast of Rwy 7-25.</p>	

AWOS-3 <b>118.8</b>	WASHINGTON CENTER <b>134.4 353.9</b>	UNICOM <b>123.0 (CTAF) 0</b>
------------------------	---	---------------------------------



NE-3, 25 FEB 2021 to 25 MAR 2021

NE-3, 25 FEB 2021 to 25 MAR 2021

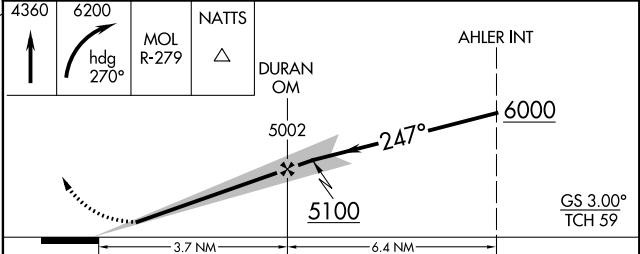
ELEV <b>3793</b>	TDZE <b>3773</b>
------------------	------------------

247° 3.7 NM from FAF

0.5% UP

3825

5600 X 100



CATEGORY	A	B	C	D
S-ILS 25	4073-7/8 300 (300-7/8)			
S-LOC 25	4240-1	467 (500-1)	4240-1 3/8	467 (500-1 3/8)
<input checked="" type="checkbox"/> CIRCLING	4440-1 647 (700-1)	4480-1 687 (700-1)	4480-1 1/2 687 (700-1 1/2)	4480-2 1/4 687 (700-2 1/4)

FAF to MAP 3.7 NM					
Knots	60	90	120	150	180
Min:Sec	3:42	2:28	1:51	1:29	1:14