

WAAS CH <b>86813</b> <b>W07A</b>	APP CRS <b>067°</b>	Rwy Idg TDZE Apt Elev	<b>5600</b> <b>3793</b> <b>3793</b>
--	------------------------	-----------------------------	---

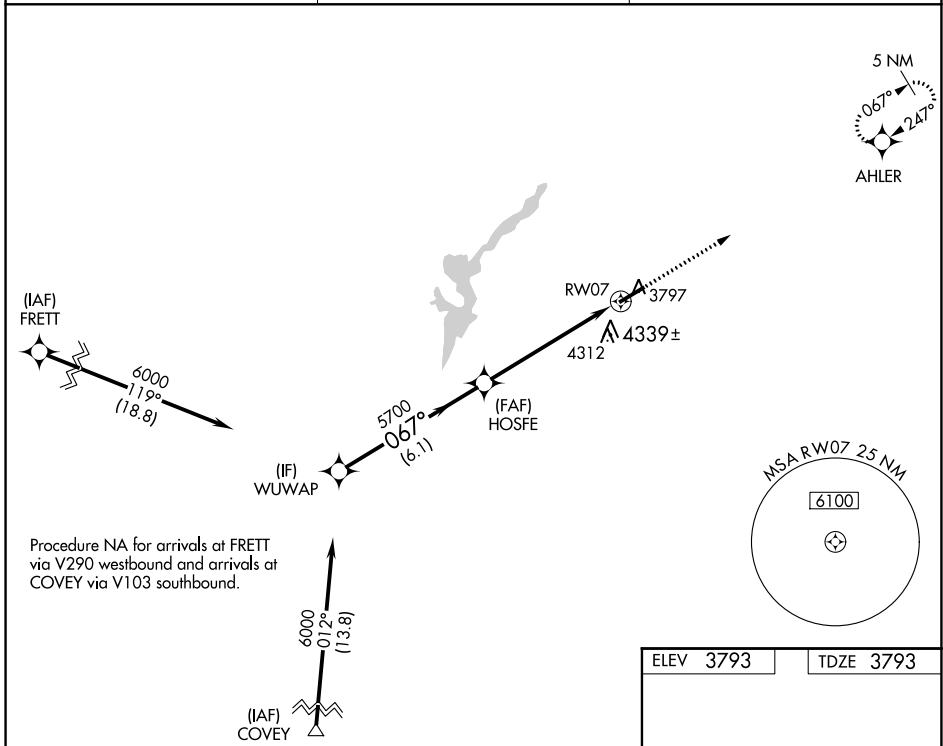
# RNAV (GPS) RWY 7

INGALLS FIELD (HSP)

**⚠** Circling NA southeast of Rwy 7-25. Baro-VNAV NA.  
**⚠** DME/DME RNP-0.3 NA. Visibility reduction by helicopters NA.  
 When local altimeter setting not received, procedure NA.

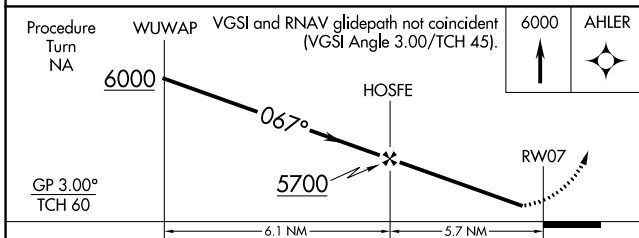
MISSED APPROACH: Climb to 6000 direct AHLER and hold.

AWOS-3 <b>118.8</b>	WASHINGTON CENTER <b>134.4 353.9</b>	UNICOM <b>123.0 (CTAF) 0</b>
------------------------	---	---------------------------------

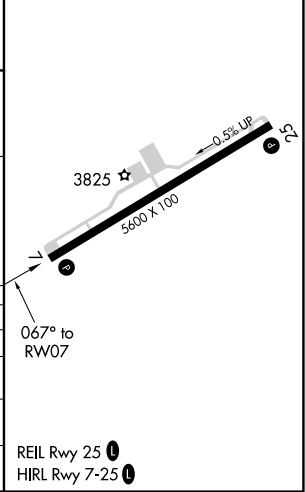


NE-3, 25 FEB 2021 to 25 MAR 2021

NE-3, 25 FEB 2021 to 25 MAR 2021



ELEV 3793	TDZE 3793
-----------	-----------



CATEGORY	A	B	C	D
LPV DA	4143-1¼		350 (400-1¼)	
LNNAV/VNAV DA	4619-3		826 (900-3)	
LNNAV MDA	4700-1¼ 907 (1000-1¼)		4700-3 907 (1000-3)	
<b>C</b> CIRCLING	4700-1¼ 907 (1000-1¼)		4700-3 907 (1000-3)	