

WAAS CH 56540 W28A	APP CRS 283°	Rwy Idg TDZE 4230 Apt Elev 4230	6000
--	------------------------	---	-------------

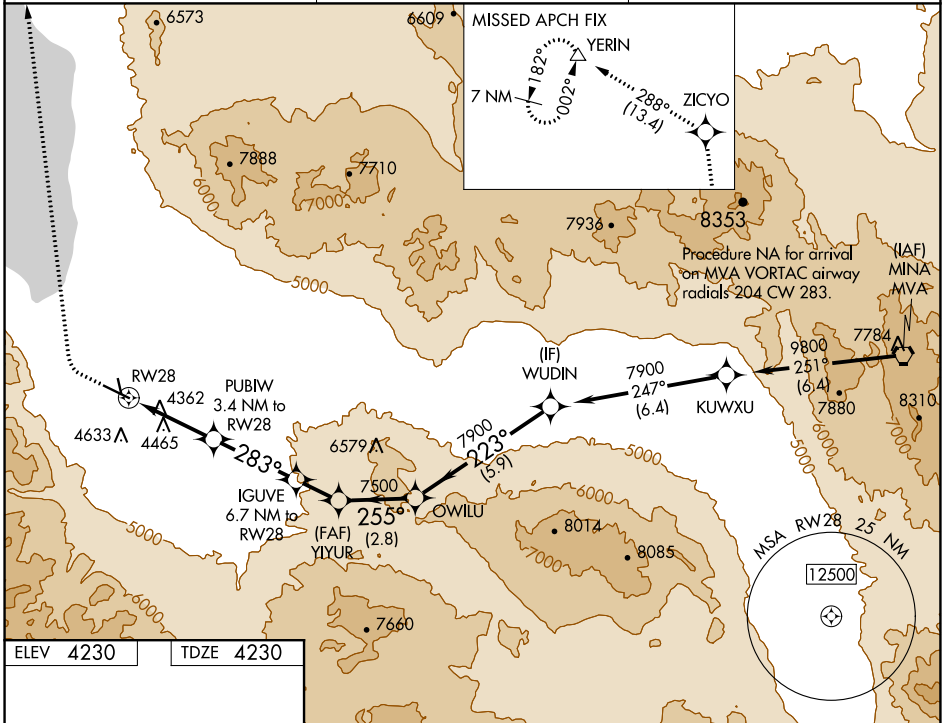
RNAV (GPS) RWY 28

HAWTHORNE INDUSTRIAL (HTH)

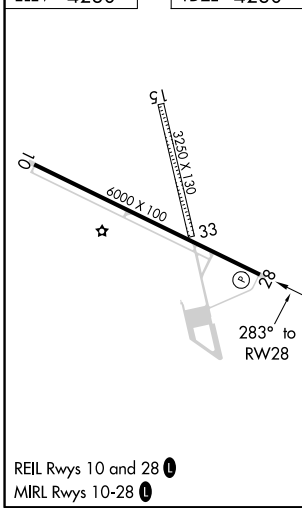
⚠ Circling NA to Rwy's 15 and 33. When local altimeter setting not received, procedure NA. Circling NA south of Rwy 10-28. DME/DME RNP-0.3 NA. Rwy 28 helicopter visibility reduction below 3/4 SM NA.

MISSED APPROACH: Climb to 4750 then climbing right turn to 10000 direct ZICYO and on track 288° to YERIN and hold.

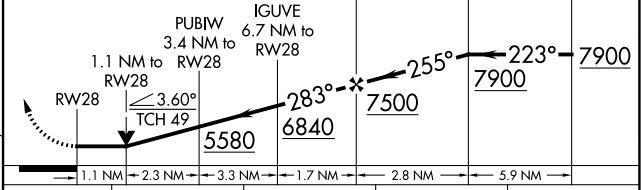
AWOS-3 120.225	OAKLAND CENTER 125.75 284.65	UNICOM 122.8 (CTAF) ①
--------------------------	--	---------------------------------



ELEV 4230	TDZE 4230
------------------	------------------



4750	10000	ZICYO	tr 288°	YERIN	VGSI and descent angles not coincident (VGSI Angle 3.00/TCH 49).
------	-------	-------	---------	-------	--



CATEGORY	A	B	C	D
LP MDA	4620-1	390 (400-1)	4620-1 1/8 390 (400-1 1/8)	NA
LNAV MDA	4720-1	490 (500-1)	4720-1 3/8 490 (500-1 3/8)	NA
C CIRCLING	4720-1	490 (500-1)	5680-3 1450 (1500-3)	NA

REIL Rwy's 10 and 28 ①
MIRL Rwy's 10-28 ①

SW-4, 25 FEB 2021 to 25 MAR 2021

SW-4, 25 FEB 2021 to 25 MAR 2021