

| | | |
|--|------------------------|---|
| WAAS CH 77928 W10B | APP CRS 102° | Rwy Idg 4255 TDZE 55 Apt Elev 55 |
|--|------------------------|---|

RNAV (GPS) X RWY 10

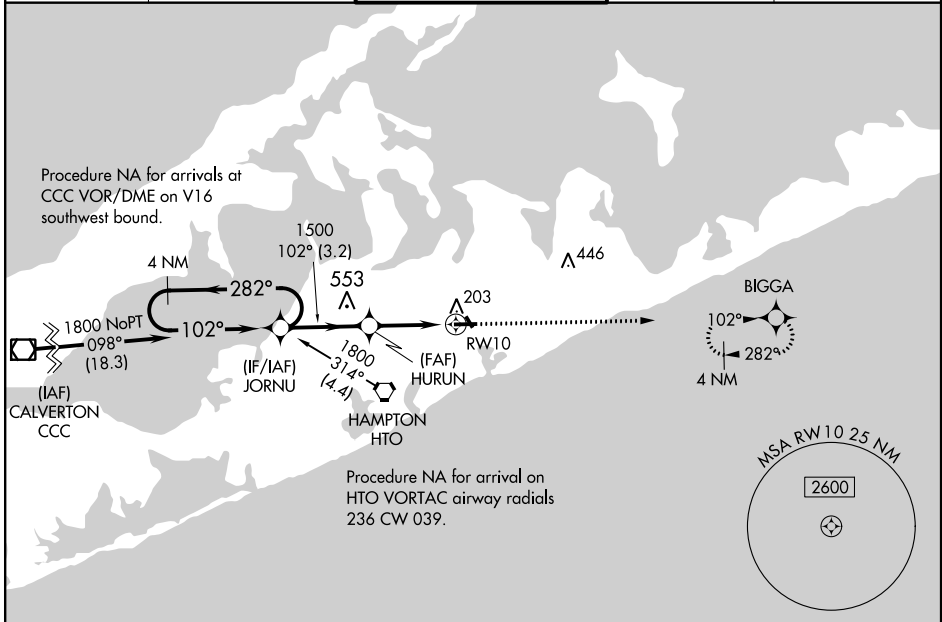
EAST HAMPTON (HTO)

⚠ Baro-VNAV NA when using Westhampton Beach altimeter setting. For uncompensated Baro-VNAV systems, LNAV/VNAV NA below -15°C (5°F) or above 54°C (130°F). DME/DME RNP-0.3 NA.

⚠ NA Helicopter visibility reduction below 1 SM NA. When local altimeter setting not received, use Westhampton Beach altimeter setting and increase all DA 45 feet and increase LPV and LNAV/VNAV visibility 1/8 mile. Night landing: Rwy 10, 28 operational VGSI required, remain on or above VGSI glidepath until threshold.

MISSED APPROACH:
Climb to 2000 direct BIGGA and hold.

| | | | | |
|----------------------------|---|---|-------------------------|---------------------------|
| AWOS-3PT 118.075 | NEW YORK APP CON 125.975 343.65 | EAST HAMPTON TOWER ★ 125.225 (CTAF) 0 | GND CON 121.9 | CLNC DEL 118.95 |
|----------------------------|---|---|-------------------------|---------------------------|



NE-2, 25 FEB 2021 to 25 MAR 2021

NE-2, 25 FEB 2021 to 25 MAR 2021

| | |
|---------|---------|
| ELEV 55 | TDZE 55 |
|---------|---------|

