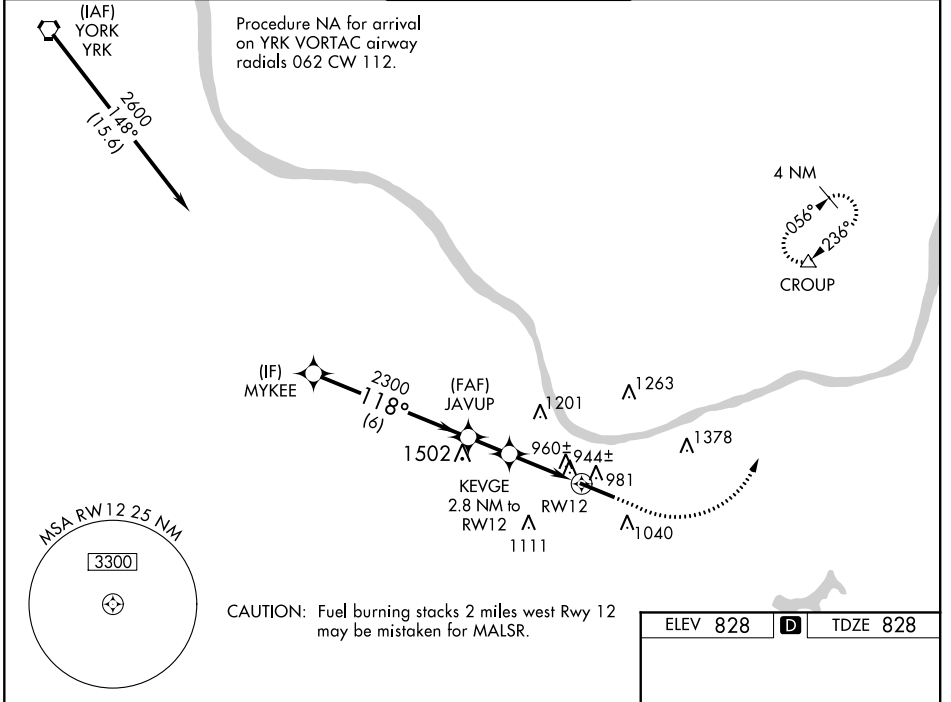


WAAS CH 45699 W12A	APP CRS 118°	Rwy Idg TDZE Apt Elev	6516 828 828
--	------------------------	-----------------------------	---

RNAV (GPS) RWY 12

TRI-STATE/MILTON J FERGUSON FIELD (HTS)

RNP APCH.		MALSR		MISSED APPROACH: Climb to 1700 then climbing left turn to 3000 direct CROUP and hold.	
ASR For inoperative ALS, increase LNAV/VNAV all Cats visibility to RVR 4500, LNAV Cat A/B to RVR 5500, Cat C/D to RVR 6000. For uncompensated Baro-VNAV systems, LNAV/VNAV NA below 16°C or above 38°C. Rwy 12 helicopter visibility reduction below ¾ SM NA.					
ATIS 125.2	HUNTINGTON APP CON 119.75 270.1	HUNTINGTON TOWER 118.5 270.1	GND CON 121.9	CLNC DEL 118.05	



NE-4, 25 FEB 2021 to 25 MAR 2021

NE-4, 25 FEB 2021 to 25 MAR 2021

	1700	3000	CROUP
GP 3.00° TCH 56	*LNAV only.		
MYKEE 2600	JAVUP 2300	KEVGE 2.8 NM to RW12	RW12
118°	1760	*1.1 NM to RW12	
6 NM	1.7 NM	1.7 NM	1.1 NM
CATEGORY	A	B	C
LPV DA		1028/40	200 (200-¾)
LNAV/VNAV DA		1126/40	298 (300-¾)
LNAV MDA		1220/40	392 (400-¾)
CIRCLING	1340-1	512 (600-1)	1340-1½ 512 (600-1½)
			1420-2 592 (600-2)

