

REDSTONE ARSENAL, ALABAMA

RNAV (GPS) RWY 35

WAAS CH 50238 W35A	APCH CRS 353°	Rwy ldg TDZE Arprt Elev	7297 661 685
--------------------------	------------------	-------------------------------	--------------------

AL-703 (USA)

REDSTONE AAF (KHUA)

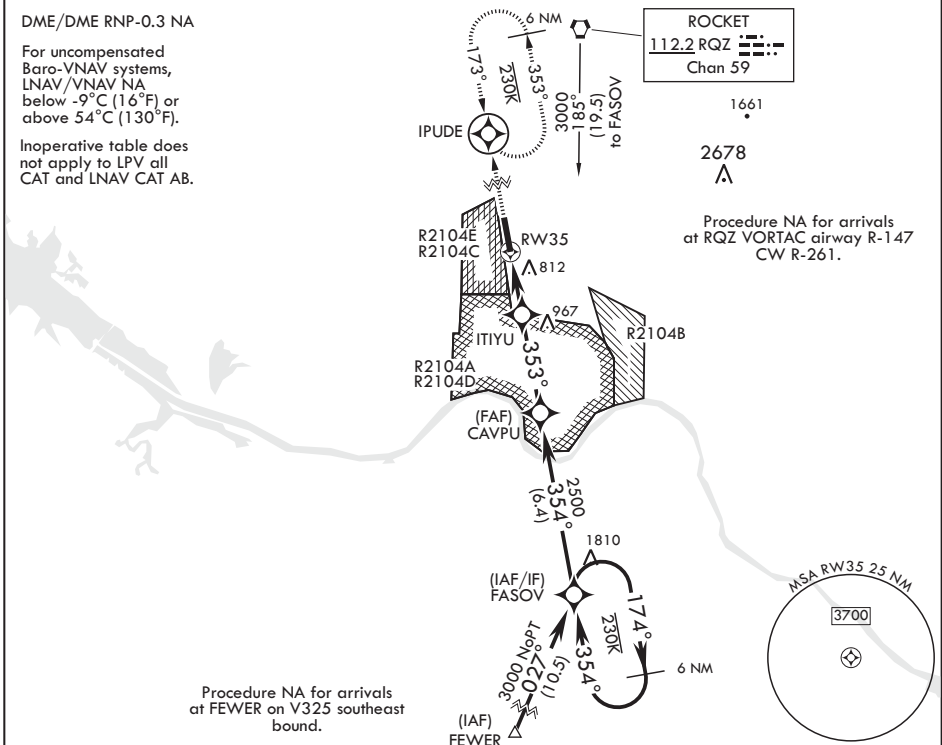
⚠ * Circling not authorized E of Rwy 17-35. MISSED APPROACH: Climb to 3000 direct IPUDE and hold.

ATIS 120.65	HUNTSVILLE APP CON/DEP CON 125.6 354.1	TOWER* 126.95 (CTAF) 290.275	PAR
-----------------------	--	---	-----

DME/DME RNP-0.3 NA

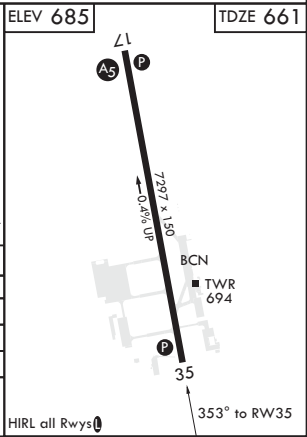
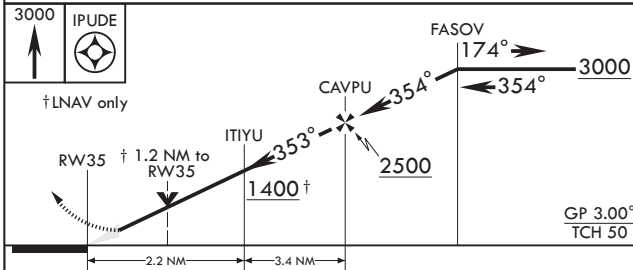
For uncompensated Baro-VNAV systems, LNAV/VNAV NA below -9°C (16°F) or above 54°C (130°F).

Inoperative table does not apply to LPV all CAT and LNAV CAT AB.



Procedure NA for arrivals at FEWER on V325 southeast bound.

Procedure NA for arrivals at RQZ VORTAC airway R-147 CW R-261.



CATEGORY	A	B	C	D	E
LPV DA	920-1		259	(300-1)	
LNAV/VNAV DA	1140-1 ⁵ / ₈		479	(500-1 ⁵ / ₈)	
LNAV MDA	1320-1	659 (700-1)	1320-1 ¹ / ₈	659 (700-1 ⁵ / ₈)	
C CIRCLING*	1320-1	635 (700-1)	1480-2 ¹ / ₄ 795 (800-2 ¹ / ₄)	1740-3 1055 (1100-3)	

REDSTONE ARSENAL, ALABAMA

34°41'N - 86°41'W

REDSTONE AAF (KHUA)

Amdt 1A 10SEP20

RNAV (GPS) RWY 35

SE-4, 25 FEB 2021 to 25 MAR 2021

SE-4, 25 FEB 2021 to 25 MAR 2021