

RNAV (GPS) RWY 14

TERRE HAUTE RGNL (HUF)

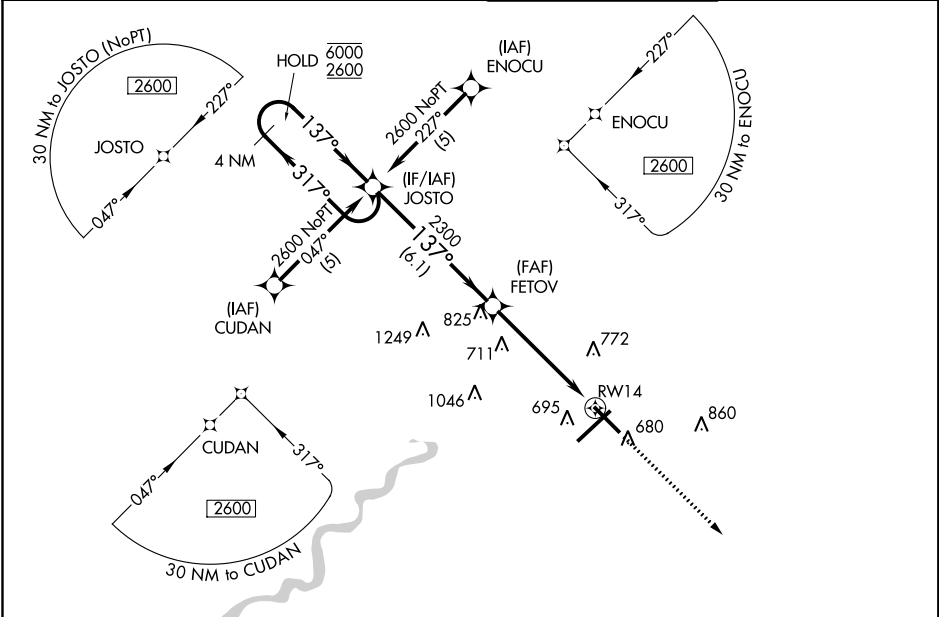
APP CRS	Rwy Idg	7200
137°	TDZE	579
	Apt Elev	589

RNP APCH.

⚠ VDP NA when using Paris altimeter setting. When local altimeter setting not received, use Paris altimeter setting and increase all MDA 80 feet, increase LNAV and Circling Cat C/D visibility ¼ SM. Rwy 14 helicopter visibility reduction below ¾ SM NA.

MISSED APPROACH:
Climb to 2600 direct CORIE and hold.

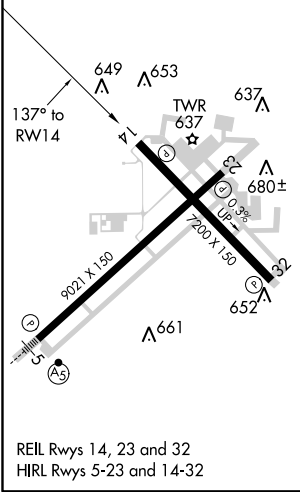
ATIS 127.5 269.375	HULMAN APP CON 125.45 339.8	HULMAN TOWER 134.725 239.0	GND CON 121.6 348.6
------------------------------	---------------------------------------	--------------------------------------	-------------------------------



EC-2, 25 FEB 2021 to 25 MAR 2021

EC-2, 25 FEB 2021 to 25 MAR 2021

ELEV	589	D	TDZE	579
------	------------	----------	------	------------



REIL Rws 14, 23 and 32
HIRL Rws 5-23 and 14-32

⚠ 1549

4 NM Holding Pattern

JOSTO

6000 ← 317°

2600 → 137°

FETOV

2300

3.04° TCH 55

6.1 NM

4 NM

1.2

RWY 14

* 1.2 NM to RWY 14

* LNAV only.

CATEGORY	A	B	C	D
LNAV MDA	1140-1	561 (600-1)	1140-1½	561 (600-1½)
C CIRCLING	1140-1	551 (600-1)	1220-1¾ 631 (700-1¾)	1220-2 631 (700-2)