

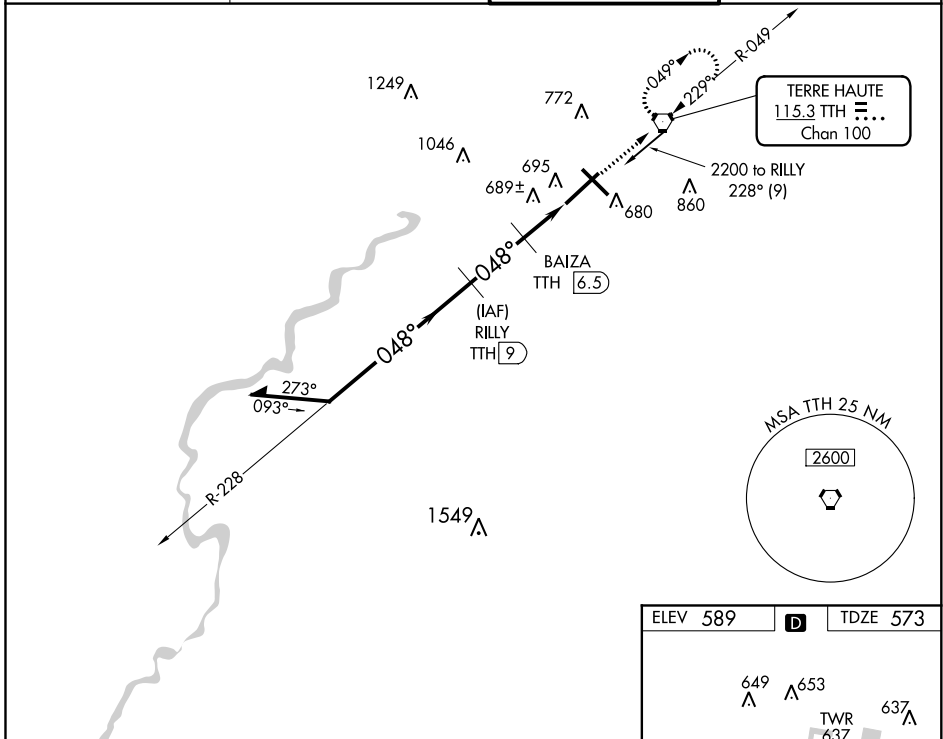
VORTAC TTH <b>115.3</b> Chan <b>100</b>	APP CRS <b>048°</b>	Rwy Idg TDZE Apt Elev <b>9020</b> <b>573</b> <b>589</b>
---	------------------------	--

# VOR RWY 5

TERRE HAUTE RGNL (HUF)

DME required.	MALS R 	MISSED APPROACH: Climb to 2300 direct TTH VORTAC and hold.
VDP NA when using Paris, IL altimeter setting. When local altimeter setting not received, use Paris altimeter setting and increase all MDA 80 feet and Circling Cat C/D visibility 1/4 SM. For inop ALS, increase S-5 Cat C/D visibility to RVR 6000. Rwy 5 helicopter visibility reduction below 3/4 SM NA.		

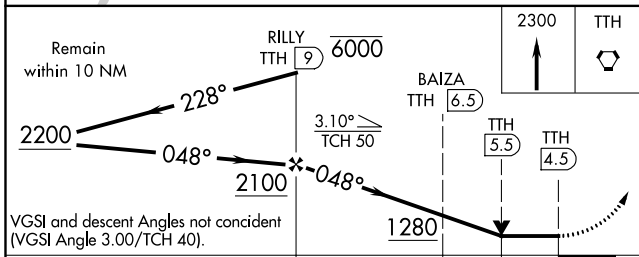
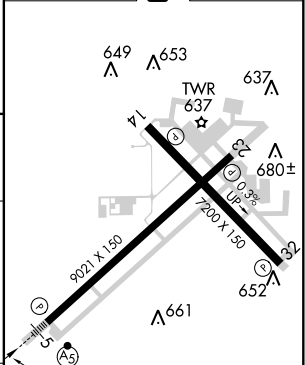
ATIS <b>127.5 269.375</b>	HULMAN APP CON <b>125.45 339.8</b>	HULMAN TOWER <b>134.725 239.0</b>	GND CON <b>121.6 348.6</b>
------------------------------	---------------------------------------	--------------------------------------	-------------------------------



EC-2, 25 FEB 2021 to 25 MAR 2021

EC-2, 25 FEB 2021 to 25 MAR 2021

ELEV 589	<b>D</b>	TDZE 573
----------	----------	----------



Remain within 10 NM	RILLY TTH (9) 6000	2300 TTH	
2200	2100	1280	
228°	048°	3.10° TCH 50	
VGSi and descent Angles not coincident (VGSi Angle 3.00/TCH 40).			
2.5 NM   1 NM   1 NM			
BAIZA TTH (6.5)	TTH (5.5)	TTH (4.5)	
048° 4.5 NM from FAF			

CATEGORY	A	B	C	D
S-5		960/50	387 (400-1)	
CIRCLING	1040-1	451 (500-1)	1220-1 3/4 631 (700-1 3/4)	1220-2 631 (700-2)

REIL Rwy 14, 23 and 32  
HIRL Rwy 5-23 and 14-32