

| | | |
|--|------------------------|---|
| WAAS CH 82221 W26A | APP CRS 259° | Rwy Idg TDZE 564 Apt Elev 564 |
|--|------------------------|---|

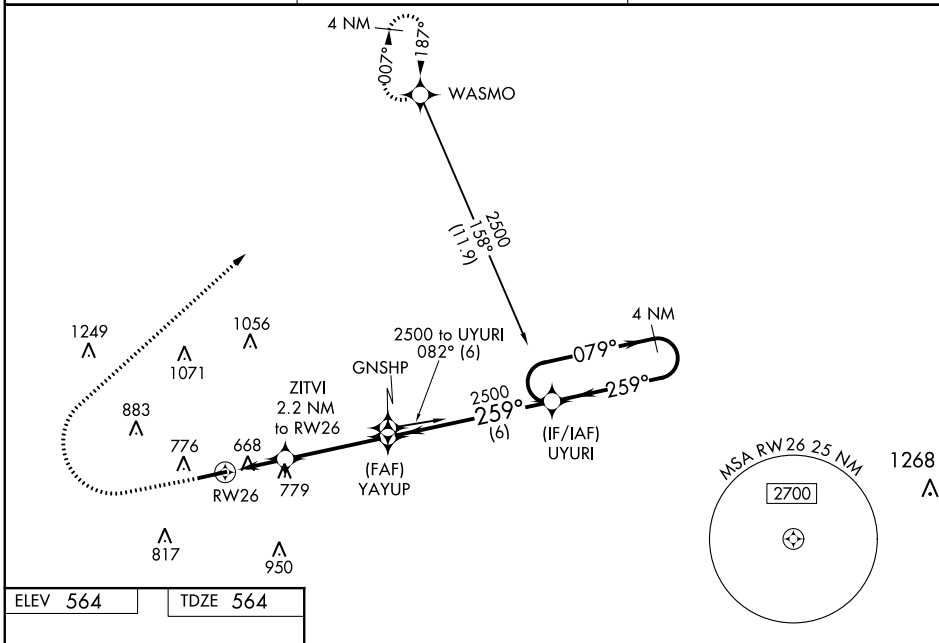
RNAV (GPS) RWY 26

HOPKINSVILLE-CHRISTIAN COUNTY (HVC)

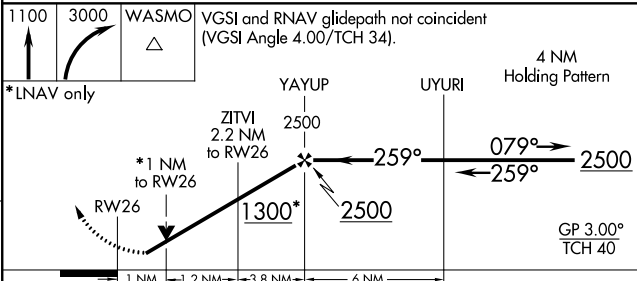
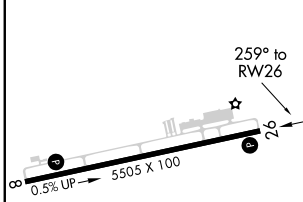
⚠️ Night landing: Rwy 8 NA. For uncompensated Baro-VNAV systems, LNAV/VNAV NA below -16°C (4°F) or above 54°C (130°F). Baro-VNAV and VDP NA when using Clarksville altimeter setting. DME/DME RNP-0.3 NA. Helicopter visibility reduction below 3/4 SM NA. When local altimeter setting not received, use Clarksville altimeter setting and increase LPV DA to 285 feet and all visibilities 1/8 mile; increase LNAV/VNAV DA to 467 feet and all visibilities 1/8 mile; increase all MDA 40 feet and Circling Cat C visibility 1/4 mile.

MISSED APPROACH:
Climb to 1100 then climbing right turn to 3000 direct WASMO and hold.

| | | |
|--------------------------|--|---------------------------------|
| AWOS-3 132.575 | CAMPBELL APP CON 118.1 269.525 | UNICOM 122.8 (CTAF) 0 |
|--------------------------|--|---------------------------------|



| | |
|-----------------|-----------------|
| ELEV 564 | TDZE 564 |
|-----------------|-----------------|



| CATEGORY | A | B | C | D |
|-------------------|--------|-------------|-----------------------|-------------------------------|
| LPV DA | | 814-7/8 | 250 (300-7/8) | |
| LNAV/VNAV DA | | 996-1 1/2 | 432 (500-1 1/2) | |
| LNAV MDA | 1040-1 | 476 (500-1) | 1040-1 3/8 | 476 (500-1 3/8) |
| C CIRCLING | 1140-1 | 576 (600-1) | 1280-2 716 (800-2) | 1320-2 1/2 756 (800-2 1/2) |

MIRL Rwy 8-26 **0**
REIL Rwy 8 and 26 **0**

SE-1, 25 FEB 2021 to 25 MAR 2021

SE-1, 25 FEB 2021 to 25 MAR 2021